

Support for Singaporeans

1- and 2-Room HDB Flats

Apr 2026 – Mar 2027



Benefits for You

- **Cash** for Singaporeans aged 21 and above
 - Cost-of-Living Special Payment for eligible Singaporeans \$200 to \$400
 - Assurance Package for all Singaporeans \$100 to \$250
 - GST Voucher scheme for lower- and middle-income Singaporeans \$450 or \$850
- **MediSave** \$150 to \$450
for eligible Singaporeans aged 65 and above
- **CPF Top-Up** \$500 to \$1,500
for eligible Singaporeans aged 50 and above
with CPF balances below prevailing Basic Retirement Sum
- **Child LifeSG Credits** \$500
for all Singaporean children aged 12 and below

Benefits for Household

- **CDC Vouchers** \$500
- **U-Save** \$570
- **S&CC Rebate** About \$100
(3.5 months offset)

Upcoming Benefits
Support For You



go.gov.sg/sfyb2026

Benefits Received
Your Benefits @ LifeSG



go.gov.sg/yb2026

Updated on 12/02/2026

Note: Benefits are subject to the individual's or household's eligibility.

Support for Singaporeans

3-Room HDB Flats

Apr 2026 – Mar 2027



Benefits for You

- **Cash** for Singaporeans aged 21 and above
 - Cost-of-Living Special Payment for eligible Singaporeans \$200 to \$400
 - Assurance Package for all Singaporeans \$100 to \$250
 - GST Voucher scheme for lower- and middle-income Singaporeans \$450 or \$850
- **MediSave** \$150 to \$450
for eligible Singaporeans aged 65 and above
- **CPF Top-Up** \$500 to \$1,500
for eligible Singaporeans aged 50 and above
with CPF balances below prevailing Basic Retirement Sum
- **Child LifeSG Credits** \$500
for all Singaporean children aged 12 and below

Benefits for Household

- **CDC Vouchers** \$500
- **U-Save** \$510
- **S&CC Rebate** About \$130
(2.5 months offset)

Upcoming Benefits
Support For You



go.gov.sg/sfyb2026

Benefits Received
Your Benefits @ LifeSG



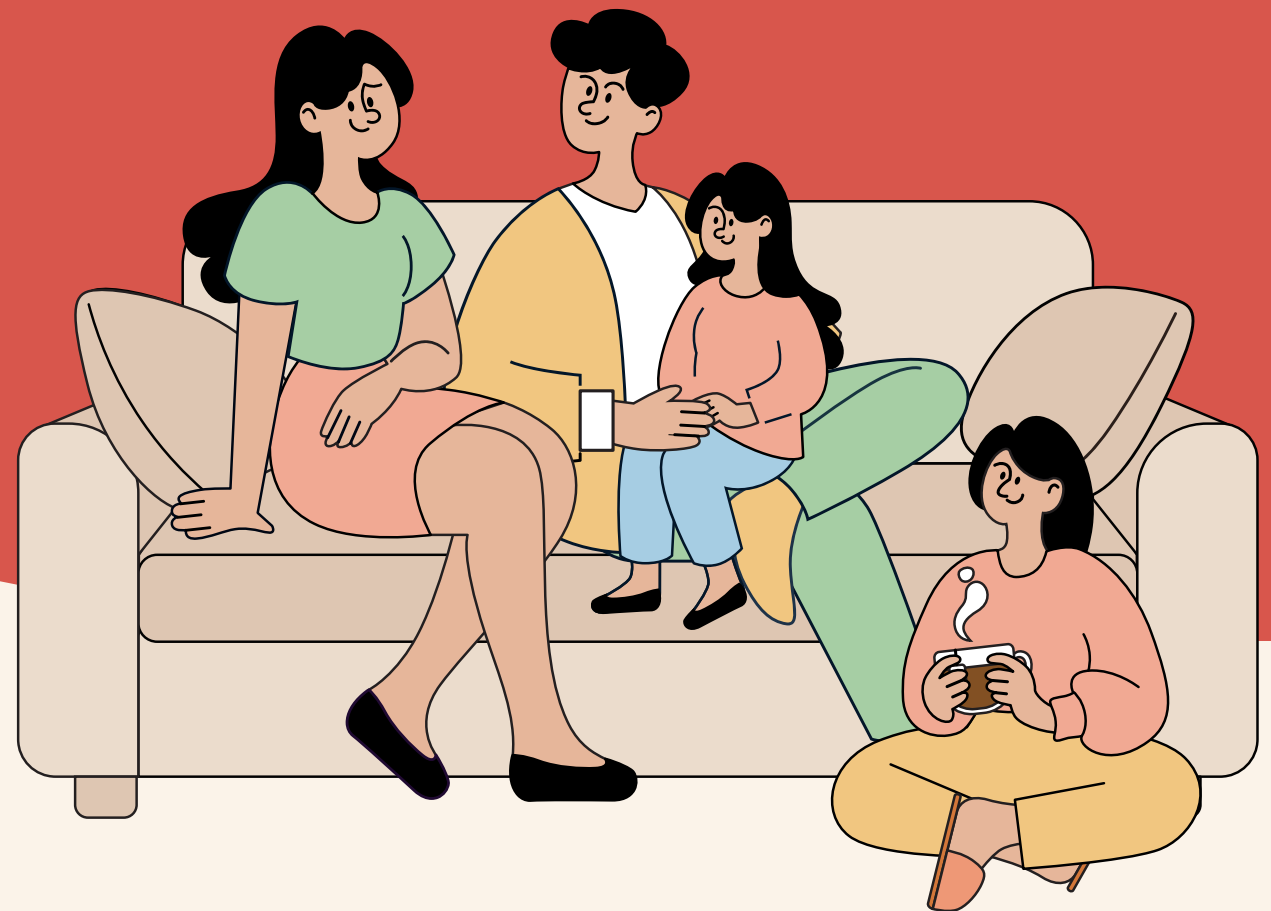
go.gov.sg/yb2026

Note: Benefits are subject to the individual's or household's eligibility.

Support for Singaporeans

4-Room HDB Flats

Apr 2026 – Mar 2027



Benefits for You

- **Cash** for Singaporeans aged 21 and above
 - Cost-of-Living Special Payment for eligible Singaporeans \$200 to \$400
 - Assurance Package for all Singaporeans \$100 to \$250
 - GST Voucher scheme for lower- and middle-income Singaporeans \$450 or \$850
- **MediSave** \$150 to \$450
for eligible Singaporeans aged 65 and above
- **CPF Top-Up** \$500 to \$1,500
for eligible Singaporeans aged 50 and above
with CPF balances below prevailing Basic Retirement Sum
- **Child LifeSG Credits** \$500
for all Singaporean children aged 12 and below

Benefits for Household

- **CDC Vouchers** \$500
- **U-Save** \$450
- **S&CC Rebate** About \$180
(2.5 months offset)

Upcoming Benefits
Support For You



go.gov.sg/sfyb2026

Benefits Received
Your Benefits @ LifeSG



go.gov.sg/yb2026

Updated on 12/02/2026

Note: Benefits are subject to the individual's or household's eligibility.

Support for Singaporeans

5-Room HDB Flats

Apr 2026 – Mar 2027



Benefits for You

- **Cash** for Singaporeans aged 21 and above
 - Cost-of-Living Special Payment for eligible Singaporeans \$200 to \$400
 - Assurance Package for all Singaporeans \$100 to \$250
 - GST Voucher scheme for lower- and middle-income Singaporeans \$450 or \$850
- **MediSave** \$150 to \$450
for eligible Singaporeans aged 65 and above
- **CPF Top-Up** \$500 to \$1,500
for eligible Singaporeans aged 50 and above
with CPF balances below prevailing Basic Retirement Sum
- **Child LifeSG Credits** \$500
for all Singaporean children aged 12 and below

Benefits for Household

- **CDC Vouchers** \$500
- **U-Save** \$390
- **S&CC Rebate** About \$180
(2 months offset)

Upcoming Benefits
Support For You



go.gov.sg/sfyb2026

Benefits Received
Your Benefits @ LifeSG



go.gov.sg/yb2026

Updated on 12/02/2026

Note: Benefits are subject to the individual's or household's eligibility.

Executive / Multi-Generation HDB Flats

Apr 2026 – Mar 2027



Benefits for You

- **Cash for Singaporeans aged 21 and above**
 - Cost-of-Living Special Payment for eligible Singaporeans \$200 to \$400
 - Assurance Package for all Singaporeans \$100 to \$250
 - GST Voucher scheme for lower- and middle-income Singaporeans \$450 or \$850
- **MediSave** \$150 to \$450
for eligible Singaporeans aged 65 and above
- **CPF Top-Up** \$500 to \$1,500
for eligible Singaporeans aged 50 and above
with CPF balances below prevailing Basic Retirement Sum
- **Child LifeSG Credits** \$500
for all Singaporean children aged 12 and below

Benefits for Household

- **CDC Vouchers** \$500
- **U-Save** \$330
- **S&CC Rebate** About \$180
(1.5 months offset)

Upcoming Benefits
Support For You



go.gov.sg/sfyb2026

Benefits Received
Your Benefits @ LifeSG



go.gov.sg/yb2026

Updated on 12/02/2026

Note: Benefits are subject to the individual's or household's eligibility.