

# COURSE BOOKLET 2026



**LEARNING  
EMPOWERS  
SUCCESS**





# HANDS-ON, MINDS-ON, HEARTS-ON™ EDUCATION

Career-Ready,  
Future-Ready  
Courses

Authentic  
Learning  
Environment

Vibrant  
Campuses

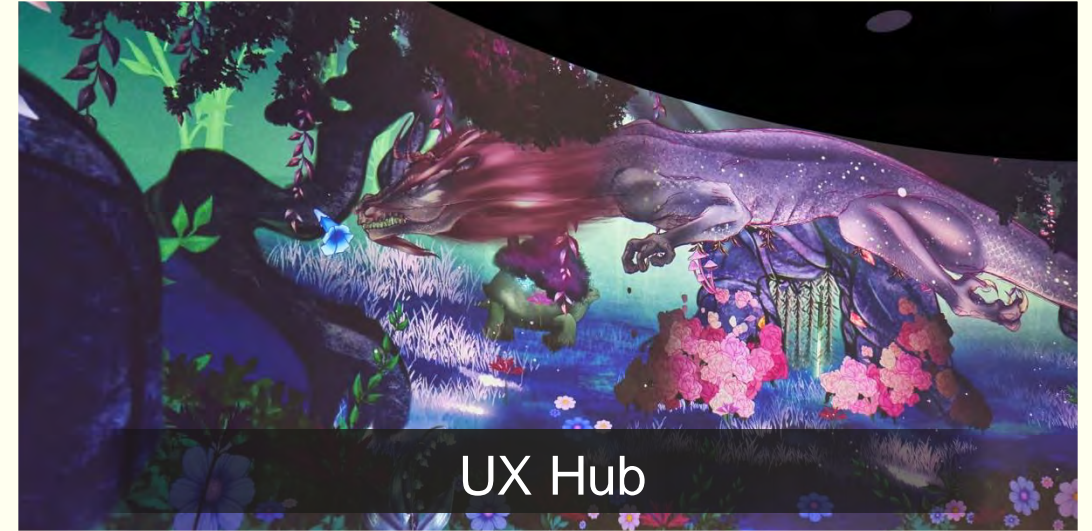
State-of-the-Art  
Training  
Facilities



Explore many **possibilities**  
that **excite!**



# EXAMPLES OF AUTHENTIC LEARNING AT ITE COLLEGE CENTRAL





# EXAMPLES OF AUTHENTIC LEARNING AT ITE COLLEGE EAST



Centre for Healthcare Simulation



Beauty Therapy Training Centre



Artificial Intelligence Lab



HortiTech Hub



# EXAMPLES OF AUTHENTIC LEARNING AT ITE COLLEGE WEST





# OVERSEAS EXPOSURE PROGRAMMES



ITE enables students to expand their global perspectives in Asia and beyond!

- **Overseas Internship Programme:**  
Gain work experience with international companies
- **Overseas Student Exposure Programme:**  
Attend classes at institutions abroad
- **Overseas Service & Development Programme:**  
Engage in community service projects, participate in international competitions, seminars, conferences, and leadership programmes



# CO-CURRICULAR ACTIVITIES

## Arts

Acoustic Pop Band  
K-Pop Dance  
Magic Club  
Photography  
Sand Animation  
Visual Arts

## Community

Care & repair club  
Community service club  
Rotaract club  
Safe home club

## Sports & Games

Archery  
Cycling  
Karate  
Rock Climbing  
Swimming  
Volleyball

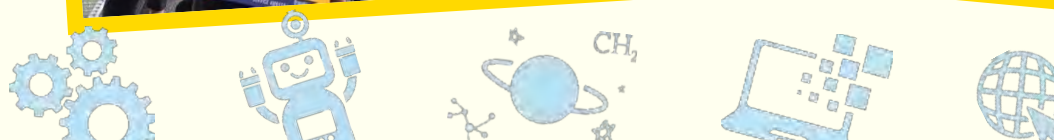
## Leadership

Bridge Leaders  
Peer Support Leaders  
Student Council  
Student Icons

## Arts

3D Printing Club  
Cyber Games Club  
Entrepreneurship Club  
Investment Club  
Robotics Club

JUST SOME EXAMPLES!



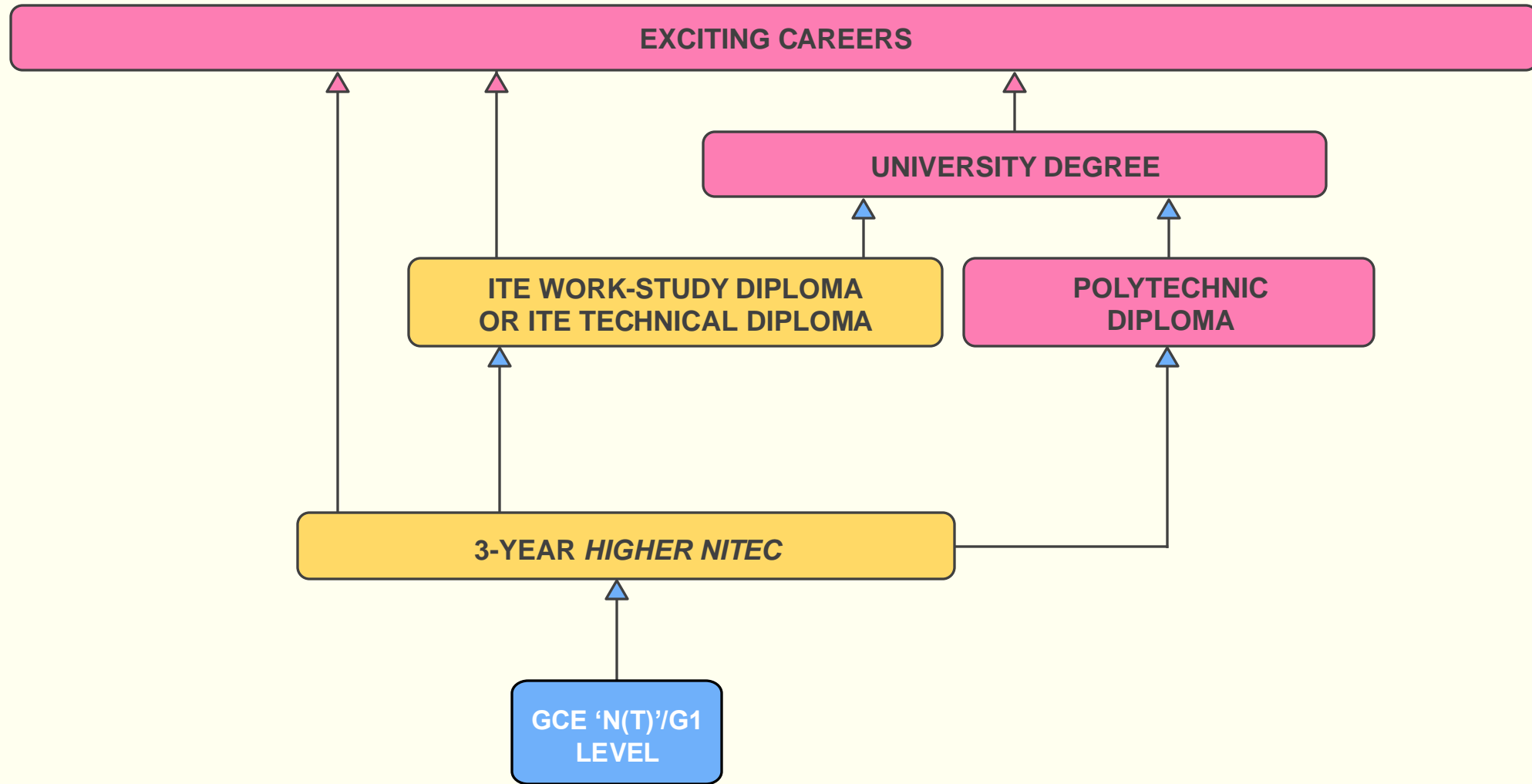




# PROGRESSION PATHWAYS, **TRAINING** **PROGRAMMES AND** **COURSES**

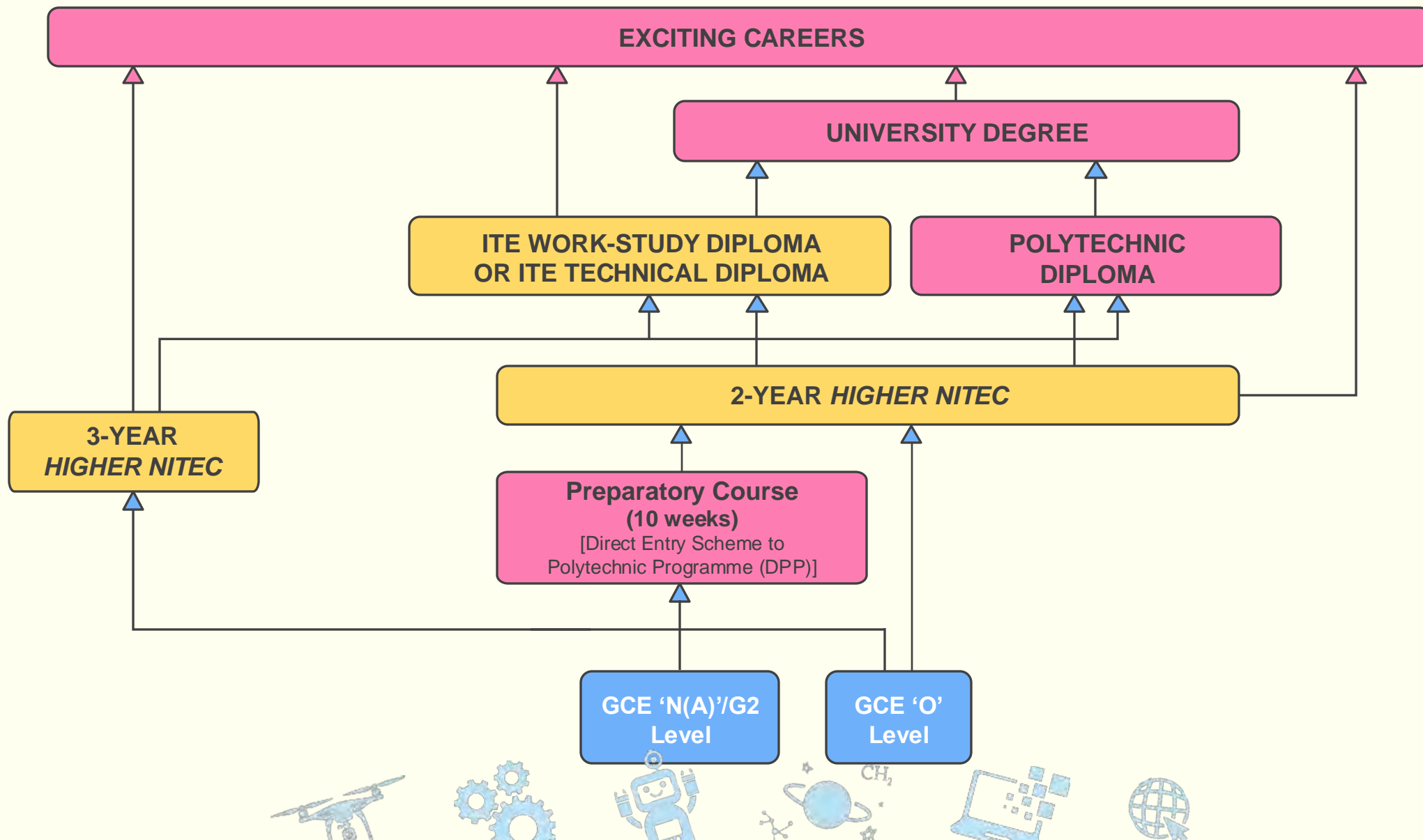


# PROGRESSION PATHWAYS





# PROGRESSION PATHWAYS





# EARLY ADMISSIONS EXERCISE (EAE)

**Do you have a special talent or passion for a course in ITE?**

Secure your place with us before your GCE 'N' or 'O' Level exams!

1

Apply for a course based on your aptitude and interest

2

Attend an interview and/or aptitude test, if selected

3

Receive a Conditional Offer for admission to ITE before your GCE 'N' or 'O' Level exams!

4

Meet the Minimum Entry Requirements of the course and you can join ITE



Scan to view  
EAE video



My aspiration is to either become a sports management professional, a Karate athlete, or a Karate coach. To work towards this, I decided to apply for the EAE in *Higher Nitec* in Sport Management. This has allowed me to develop useful practical skills while attaining relevant theoretical knowledge such as in the area of sports science and coaching. I believe this has placed me in good stead for a fulfilling sports career!

**Brylle Neo Ming Wei**

*Higher Nitec* in Sport Management  
ITE College East



# EAE APPLICATION PROCESS

## Application Late May

Submit your EAE application at [www.ite.edu.sg](http://www.ite.edu.sg) (prepare write-up + supporting documents)

## Selection & Interview Mid Jun to Mid Jul

Shortlisted applicants will have to undergo an interview and/or aptitude test

## Offer & Acceptance Late Aug

1. Conditional offers will be given to successful applicants
2. Applicants are required to **accept** the offer within a specified period
3. Successful applicants will get a place in ITE as long as their GCE 'N' Level results meet the **Minimum Entry Requirements** of the course



(Apply at <https://www.ite.edu.sg/secondary-school-students/admissions/early-admissions-exercise-using-singpass>)

(View result at <https://istudent.ite.edu.sg>)

Refer to [www.ite.edu.sg](http://www.ite.edu.sg) for the latest schedule





# WHAT TO PREPARE FOR EAE APPLICATION

## Submit Your Application Online

### 100-word write-up

- Why do you want to apply for the course?
- How are your talents and skills relevant to the course?

### Provide relevant supporting documents

- Relevant certificates
- Sample works/portfolios (if any)
- Testimonials
- CCA records
- Others

**Note:**

You can apply for up to 3 *Higher Nitec* courses

If you are shortlisted...

### Be prepared in your interview/aptitude test

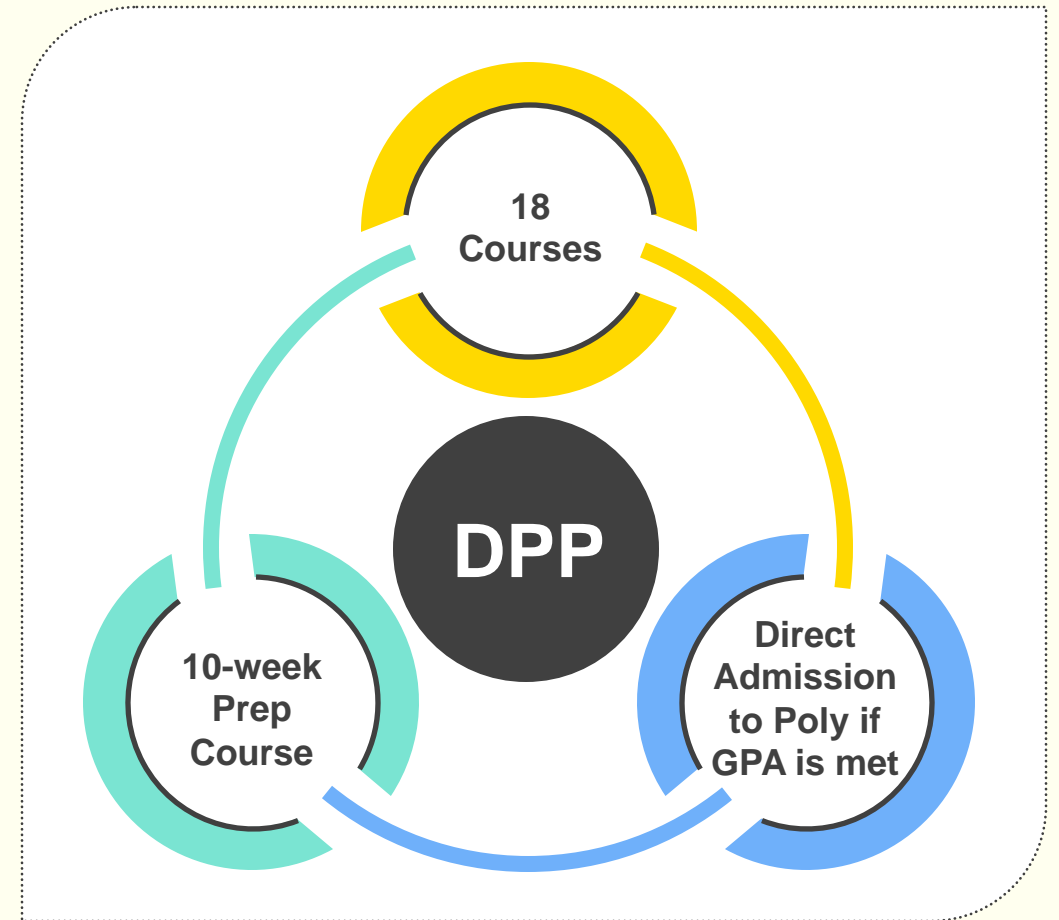
- Bring along your supporting documents
- Demonstrate good understanding of the course and industry
- Share your passion and interests related to the course



# DPP – DIRECT ENTRY SCHEME TO POLYTECHNIC PROGRAMME

## (2-Year *Higher Nitec*)

### For Normal (Academic) Students



GPA – Grade Point Average





# MINIMUM ENTRY REQUIREMENTS FOR DPP

## Applied Sciences / Engineering / Info-Communications Technology

### Minimum Entry Requirements

Grades 1 – 4 in English Language

Grades 1 – 4 in Mathematics

Grades 1 – 5 in three other subjects

## Business & Services / Hospitality

### Minimum Entry Requirements

Grade 1 – 3 in English Language

Grade 1 – 4 in Mathematics

Grade 1 – 5 in three other subjects

**You need English + Maths + 3 Best Subjects  $\leq$  19 points**



**Bio-Chemical  
Technology**



**Civil & Structural  
Engineering  
Design**



**Electrical  
Engineering**



**Accounting**



**Business  
Administration**



**Event  
Management**



**Electronics  
Engineering**



**Mechanical  
Engineering**



**Mechatronics  
Engineering**



**Hospitality  
Operations**



**Logistics &  
Supply Chain  
Management**



**Customer  
Experience**



**Business  
Information  
Systems**



**Cyber & Network  
Security**



**Immersive  
Applications  
& Games**



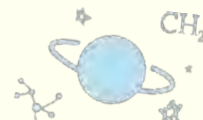
**Tourism**



**IT Applications  
Development**



**IT Systems &  
Networks**



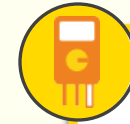
# AGGREGATE POINTS FOR HEALTH SCIENCES / ENGINEERING / ELECTRONICS & INFO-COMM TECHNOLOGY



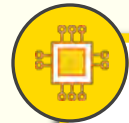
**Bio-Chemical  
Technology**  
7 (CE)



**Civil & Structural  
Engineering Design**  
10 (CE)



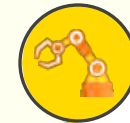
**Electrical  
Engineering**  
14 (CE) | 14 (CW)



**Electronics  
Engineering**  
13 (CC) | 14 (CE) | 14 (CW)



**Mechanical  
Engineering**  
12 (CC) | 14 (CE) | 14 (CW)



**Mechatronics  
Engineering**  
12 (CC) | 14 (CW)



**Business  
Information Systems**  
9 (CE)



**Cyber & Network  
Security**  
8 (CC) | 11 (CE) | 11 (CW)



**Immersive  
Applications & Games**  
9 (CC)



**IT Applications  
Development**  
10 (CC) | 11 (CE) | 11 (CW)



**IT Systems &  
Networks**  
11 (CC) | 12 (CE) | 11 (CW)

## LEGEND

CC – College Central  
CE – College East  
CW – College West

The points reflected above are indicative cut off  
points from 2025 intake





# AGGREGATE POINTS FOR BUSINESS & SERVICES, AND HOSPITALITY



**Accounting**

**8 (CC) | 10 (CE) | 9 (CW)**



**Event  
Management**

**9 (CC)**



**Business  
Administration**

**9 (CC) | 10(CE) | 7(CW)**



**Hospitality  
Operations**

**11 (CW)**



**Logistics & Supply  
Chain Management**

**11 (CE)**



**Tourism**

**11 (CW)**



**Customer  
Experience**

**11 (CW)**



“  
Though I qualified for Secondary 5, I had doubts about my O-Level prospects. Encouraged by my parents to focus on my strengths, I explored my interest in IoT and engineering and chose ITE through the Direct-Entry Scheme to Polytechnic Programme (DPP) – a decision that changed my life.

**Santos Rachael Ham**  
**Higher Nitec in Electronics Engineering**  
**ITE College Central**

## LEGEND

CC – College Central  
CE – College East  
CW – College West

The points reflected above are indicative cut off points from 2025 intake



## MORE ON DPP

To secure direct entry into a relevant diploma programme at a polytechnic, you must satisfy the following eligibility requirements:

Higher Nitec Course	Progress to 1 <sup>st</sup> Year in relevant Polytechnic Diploma Course	Progress to 2 <sup>nd</sup> Year in relevant Polytechnic Diploma Course
Applied Sciences	ITE GPA $\geq$ <b><u>2.5 points</u></b> (excluding CCA bonus points)	N.A.
Engineering and Info-Communications Technology	ITE GPA $\geq$ <b><u>2.5 points</u></b> (excluding CCA bonus points)	ITE GPA $\geq$ <b><u>3.5 points</u></b> (excluding CCA bonus points)
Business & Services	ITE GPA $\geq$ <b><u>3.0 points</u></b> (excluding CCA bonus points)	N.A.





# ITE PROGRAMMES

50

2-Year  
*Higher Nitec*



49

3-Year  
*Higher Nitec*



8

Technical  
Diploma



45

Work-Study  
Diploma



# 3-YEAR *HIGHER NITEC* PROGRAMME

## FEATURES



Attain a  
*Higher Nitec*  
Qualification  
in 3 years



N(A) and N(T) students  
can apply with  
existing *Nitec* entry  
requirements



Gain exposure to modules  
in their sector in Year 1  
before specialising later



'O' Level and DPP  
students with Minimum  
Entry Requirements  
join Year 2 directly



2 integrated internships –  
3 months in Year 2 and  
6 months in Year 3



My time at ITE was instrumental - it gave me the chance to challenge perspectives, grow alongside my peers, and discover my potential. Leading and being a voice for students who often go unheard means a great deal to me. I hope my journey inspires others to take charge of their story and be the light at the end of someone's tunnel.

**Damien Koh Wen Hao**  
*Higher Nitec in Sport Management*  
ITE College West



Scan to find  
out more!





# HOW TO COMPUTE YOUR AGGREGATE POINTS FOR 3-YEAR HIGHER NITEC COURSES WITH NORMAL (TECHNICAL) SUBJECTS

Normal (Technical) Grade	ITE Aggregate Points*
A	1
B	2
C	3
D	4
E/U	5

\* A lower aggregate point is indicative of better performance

Type of Bonus Points	Number of Bonus Points Awarded
<b>CCA Grades:</b> 1) Excellent or Grades A1 – A2	2
2) Good or Grades B3 – C6	1



## EXAMPLE OF AGGREGATE POINTS FOR A NORMAL (TECHNICAL) STUDENT

### Normal (Technical) Results

Name: **Clare**

ENGLISH LANGUAGE	A
MATHEMATICS	A
DESIGN & TECHNOLOGY	B
SCIENCE	C
SOCIAL STUDIES	E
CCA GRADE	EXCELLENT

### My Aggregate Points (based on best 4 subjects)

English Language: 1 point

Mathematics: 1 point

Design & Technology: 2 points

Science: 3 points

CCA Grade: 2 bonus points

Aggregate points:

1+1+2+3 – 2 bonus points

**= 5 points**





# HOW TO COMPUTE YOUR AGGREGATE POINTS FOR 3-YEAR HIGHER NITEC COURSES WITH NORMAL (ACADEMIC) SUBJECTS

Normal (Academic) Grade	ITE Aggregate Points*
1, 2, 3	1
4	2
5	3
6/U	4

\* A lower aggregate point is indicative of better performance

Type of Bonus Points	Number of Bonus Points Awarded
<b>CCA Grades:</b> 1) Excellent or Grades A1 – A2	2
2) Good or Grades B3 – C6	1



## EXAMPLE OF AGGREGATE POINTS FOR A NORMAL (ACADEMIC) STUDENT

### Normal (Academic) Results

Name: **Alex**

ENGLISH LANGUAGE	Grade 1
MATHEMATICS	Grade 2
ADDITIONAL MATHEMATICS	Grade 2
CHEMISTRY	Grade 3
PHYSICS	Grade 5
CCA GRADE	GOOD

### My Aggregate Points (based on best 4 subjects)

English Language: 1 point

Mathematics: 1 point

Additional Mathematics: 1 point

Chemistry: 1 point

CCA Grade: 1 bonus points

Aggregate points:

1+1+1+1 – 1 bonus points

**= 3 points**





# SUBJECT-BASED BANDING

<https://www.moe.gov.sg/microsites/psle-fsbb/full-subject-based-banding/secondary-school-experience.html>

**From 2028,  
more post-secondary options  
will be available.**

Students taking at least	POST-SEC PATHWAYS					
	ITE Year 1 Entry	ITE Year 2 Entry	Polytechnic Foundation Programme (PFP)	Polytechnic Year 1	Millennia Institute	Junior College
5 G3 subjects	✓	✓	NEW ✓	✓	✓	NEW ✓
4 G3 + 1 G2 subjects	✓	✓	NEW ✓	NEW ✓		
5 G2 subjects	✓	✓	✓			
4 G1 subjects	✓	NEW* ✓				

\*Students who offer 4 G1 subjects will join Year 1 of Higher Nitec, and may be offered the accelerated pathway if they meet academic requirements during their Year 1 Semester 1 examinations. This pathway will allow them to attain a Higher Nitec in a shorter duration of about two years.



## ITE DIPLOMAS (FOR ITE GRADUATES)

# ITE OFFERS DIPLOMAS!

We have **two** types of Diploma programmes:  
**Work-Study Diploma** and **Technical Diploma**

Our Diplomas fulfil the aspirations of our graduates for academic and career progression.

Students particularly value the **hands-on training** offered by these Diplomas, and our graduates experience **strong employment prospects**, with opportunities to **continue their education** at local universities.





# WHY ITE DIPLOMAS?

## WORK-STUDY DIPLOMA (WSDIP)

- 2.5 to 3-year apprenticeship-based programme for WSDIP
- Curriculum co-designed with industry
- Earn a competitive starting salary and enjoy employee benefits
- Deepen skills through structured workplace learning and mentorship
- Get a fully-sponsored and nationally-recognised Diploma
- Opportunity for further academic progression
- Sign-on incentive of \$5,000\*
- \$10,000 CPF Ordinary Account top-up (ITE Progression Award)

## TECHNICAL DIPLOMA (TD)

- 2 to 2.5 years of full-time study
- Curriculum co-designed with leading international Vocational Training and Education institutions
- Overseas learning experience in France, Germany, Hong Kong or Switzerland (depending on the course of study)
- Jointly certified by ITE and the partner institution
- Opportunity for further academic progression
- \$10,000 CPF Ordinary Account top-up (ITE Progression Award)
- \$5,000 into Post-Secondary Education Account (PSEA)

\* For fresh ITE graduates from relevant feeder courses who are Singapore Citizens and within three years of their graduation or Operationally Ready Date. Terms and conditions apply.



# ITE Technical Diploma (International Partners)



Technical Diploma in Culinary Arts with Restaurant Management



Technical Engineer Diploma in Automotive Engineering  
Technical Engineer Diploma in Machine Technology  
Technical Engineering Diploma in Electrical Engineering (Clean Energy)



## Vocational Training Council

Technical Diploma in Beauty & Wellness Management  
Technical Engineer Diploma in Civil & Structural Engineering  
Technical Diploma in Health & Exercise Coaching



Technical Diploma in Hospitality & Hotel Management



“ The journey has been both challenging and rewarding, and I’ve learned so much from my lecturers, peers, and family who have supported me. I’m excited to make a positive impact in the beauty industry and inspire others to pursue their passions, too.

**Nurul Huda Binti Mohamed Azhar**

Technical Diploma in  
Beauty & Wellness Management  
ITE College East

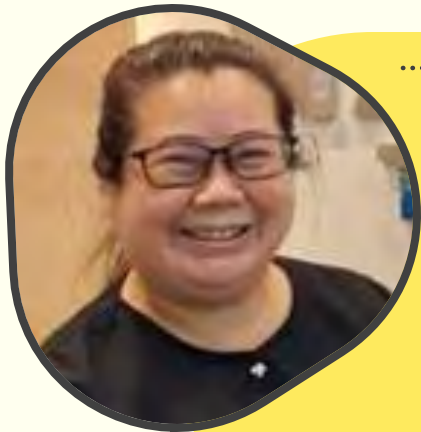


# ITE WORK-STUDY DIPLOMAS



..... “ .....  
I was able to **gain practical experience** while pursuing my studies, essentially starting my career even before I graduated. It provided me with a balance of theory and application, **setting a strong foundation for my career.**

**Dinesh Anbalagan**  
*Work-Study Diploma in IT System Integration*  
ITE College West



..... “ .....  
To stay relevant and attract younger customers, you need younger talents. The Work-Study Diploma programme **helps us achieve this by providing fresh talents.** Working with ITE has been a **fantastic experience. There is strong support and training guidelines to help us,** and we get suitable candidates each time!

**Ms Irene Ooi**  
*Director*  
*Nam Ho Travel*



**Scan to find out more!**





# LIST OF WORK-STUDY DIPLOMAS

## BUSINESS SECTOR

Accountancy
Airport Operations
Community Engagement & Development
Culinary Arts & Management
Customer Experience Management (Aviation Services)
Customer Experience Management (Cabin Services) <b>NEW</b>
Customer Experience Management (Lifestyle & Consumer)
E-Commerce & Retail
Event Management
Fitness Management
Hotel & Restaurant Management
Human Resource Management <b>NEW</b>
Lifestyle & Recreation Management
Logistics & Supply Chain Management
Patient Management & Services
Security Operations
Tourism Management

## ENGINEERING SECTOR

Agriculture & Aquaculture Technology
Aircraft Cabin Engineering
Aircraft Engine Maintenance
Aircraft Maintenance Engineering
Arboriculture & Horticulture
Architectural BIM & Design
Automation Engineering
Chemical Process Technology
Electrical Engineering
Facilities Management
Land Transport Engineering (Rail)
Land Transport Engineering (Operations Management) <b>NEW</b>
Land Transport Engineering (Vehicle)
Marine & Offshore Engineering (Engineering Design)
Marine & Offshore Engineering (Production)
Mechanical & Electrical Services Supervision
Mechanical Systems Engineering
Microelectronics (Equipment)
Microelectronics (Process)
Port Automation Technology (in-service only)
Security Systems Engineering
Vertical Transportation

## INFORMATION & DIGITAL SECTOR

AI & Data Intelligence (AI)
AI & Data Intelligence (Data Engineering)
Cloud Management & Operations (Cloud Operations)
Cloud Management & Operations (Infrastructure Support)
Cyber Security & Forensics
Data Centre Infrastructure & Operation
Electronics & Computer Engineering (Applied Electronics & AI)
IT System Integration

## HEALTH SCIENCE SECTOR

Community Care Integration & Management <b>NEW</b>
Nursing (in-service only)
Opticianry
Paramedicine <b>NEW</b>
Rehabilitation Care

## ARTS, DESIGN & MEDIA SECTOR

Media Communication & Digital Marketing

over **40** WSDip Courses  
across 5 Sectors!





**SCHOOL OF  
HEALTH  
SCIENCES**

# ONLY AT ITE COLLEGE EAST

3-YEAR <i>HIGHER NITEC</i> COURSE	MINIMUM ENTRY REQUIREMENTS
Community Care & Social Services	<p><b>3 GCE 'N' Passes</b> (Grade A-D or Grade 1-5) in Mathematics or Science* and two other subjects</p> <p><i>Note: *Mobile Robotics, Smart Electrical Technology, IoT Applications, Mechanical Design &amp; Automation, and Mobile Web Applications subjects Can be used in lieu of Science for admission to these courses.</i></p>
Opticianry	<p>OR</p> <p><b>2 GCE 'O' Grades</b> (Grade 1 to 8) in any two subjects</p>
Nursing	<p><b>3 GCE 'N' Passes</b> (Grade A-D or Grade 1-5) in English Language, Mathematics and one other subject</p> <p>OR</p> <p><b>2 GCE 'O' Grades</b> (Grade 1 to 8) in any two subjects</p>





# 3-YEAR *HIGHER NITEC* COURSES AGGREGATE POINTS (2026 intake)

Based on Best 4 GCE 'N' Level subjects, including pre-requisite subjects and bonus points<sup>^</sup>.

3-Year <i>Higher Nitec</i> Course	Aggregate Points
Health Sciences (CE)	
Community Care & Social Service	6
Opticianry	6
Nursing	13

CE – College East

<sup>^</sup> Pre-requisite subjects: Subjects that are compulsory to pass in order to qualify for a course | Bonus points: CCA bonus points





# SCHOOL OF BUSINESS & SERVICES

ce: SKILLS FRAME

Robots

Hands-free  
Wearables

Data

**LOGISTICS  
SOLUTIONS**  
Supply chain  
planning, design  
and engineering to  
optimise transport,  
inventory management  
and service quality



**Anticipatory Logistics**  
Using predictive algo  
rithms to enhance  
efficiency and enhance  
network utilisation

3-Year <i>Higher Nitec</i> Course	College			Minimum Entry Requirements
	Central	East	West	
Accounting	✓	✓	✓	<b>3 GCE 'N' Level Passes:</b> Grade A-D or Grade 1-5 in English Language and two other subjects  OR  <b>2 GCE 'O' Level Grades:</b> Grade 1-8 in any two subjects  <i>Note for Sport Management: Applicants are required to clear a pre-entry medical check-up</i>
Business Administration	✓	✓	✓	
Event Management	✓			
Passenger Services	✓	✓		
Sport Management	✓	✓	✓	
Tourism			✓	
Customer Experience			✓	
Beauty & Wellness Management		✓		<b>Completed GCE 'N' or GCE 'O' Level</b>  <i>Note for Beauty &amp; Wellness Management: Applicants are required to clear a pre-entry medical check-up</i>
Hairdressing & Salon Management		✓		
Logistics & Supply Chain Management		✓		
Retail & Online Business	✓	✓	✓	





# 3-YEAR *HIGHER NITEC* COURSES AGGREGATE POINTS (2026 intake)

Based on Best 4 GCE 'N' Level subjects, including pre-requisite subjects and bonus points<sup>^</sup>.

3-Year <i>Higher Nitec</i> Course	Aggregate Points
<b>Business &amp; Services</b>	
Accounting	5 (CC)   6 (CE)   6 (CW)
Business Administration	3 (CC)   4 (CE)   3 (CW)
Event Management	5 (CC)
Passenger Services	5 (CC)   8 (CE)
Sport Management	4 (CC)   5 (CE)   6 (CW)
Tourism	7 (CW)
Customer Experience	9 (CW)
Beauty & Wellness Management	5 (CE)
Hairdressing & Salon Management	6 (CE)
Logistics & Supply Chain Management	9 (CE)
Retail & Online Business	5 (CC)   7 (CE)   7 (CW)

CC – College Central / CE – College East / CW – College West

<sup>^</sup> Pre-requisite subjects: Subjects that are compulsory to pass in order to qualify for a course | Bonus points: CCA bonus points



**SCHOOL OF  
DESIGN &  
MEDIA**

# ONLY AT ITE COLLEGE CENTRAL

## 3-Year *Higher Nitec* Course

Technical Theatre & Production

Film & Video Production

Communication Design

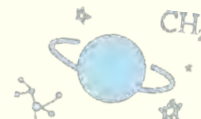
Interior & Product Design

Visual Merchandising

## Minimum Entry Requirements

Completion of GCE 'N' or 'O' Levels

*Note: Applicants for these courses must ensure that they are free from colour appreciation deficiency.*





## 3-YEAR *HIGHER NITEC* COURSES AGGREGATE POINTS (2026 intake)

Based on Best 4 GCE 'N' Level subjects, including pre-requisite subjects and bonus points<sup>^</sup>.

3-Year <i>Higher Nitec</i> Course	Aggregate Points
Design & Media (CC)	
Communication Design	3 (CC)
Film & Video Production	3 (CC)
Interior & Product Design	4 (CC)
Technical Theatre & Production	3 (CC)
Visual Merchandising	3 (CC)

CC – College Central

<sup>^</sup> Pre-requisite subjects: Subjects that are compulsory to pass in order to qualify for a course | Bonus points: CCA bonus points





# **SCHOOL OF ELECTRONICS & INFO-COMM TECHNOLOGY**

3-Year <i>Higher Nitec</i> Course	College			Minimum Entry Requirements
	Central	East	West	
AI Applications	✓		✓	<b>3 GCE 'N' Level Passes:</b> Grade A-D or Grade 1-5 in Mathematics or Science* and two other subjects  <i>Note:</i> *Mobile Robotics, Smart Electrical Technology, IoT Applications, Mechanical Design & Automation, and Mobile Web Applications subjects can be used in lieu of Science for admission to these courses.  OR  <b>2 GCE 'O' Level Grades:</b> Grade 1-8 in any two subjects  <i>Note for Electronics Engineering: Applicants for this course must ensure that they are free from colour appreciation deficiency.</i>  <b>Completed GCE 'N' or GCE 'O' Level</b> <i>Note: Applicants for this course must ensure that they are free from colour appreciation deficiency.</i>
Business Information Systems		✓		
Cyber & Network Security	✓	✓	✓	
Data Engineering			✓	
Electronics Engineering	✓	✓	✓	
Immersive Applications & Game	✓			
IT Applications Development	✓	✓	✓	
IT Systems & Networks	✓	✓	✓	
Operational & Information Technology			✓	
Security System Integration		✓	✓	





# 3-YEAR *HIGHER NITEC* COURSES AGGREGATE POINTS (2026 intake)

Based on Best 4 GCE 'N' Level subjects, including pre-requisite subjects and bonus points<sup>^</sup>.

3-Year <i>Higher Nitec</i> Course	Aggregate Points
<b>Electronics &amp; Info-Comm Technology</b>	
AI Applications	4 (CC)   5 (CW)
Business Information Systems	9 (CE)
Cyber & Network Security	4 (CC)   7 (CE)   7 (CW)
Data Engineering	8 (CW)
Electronics Engineering	8 (CC)   17 (CE)   16 (CW)
Immersive Applications & Game	3 (CC)
IT Applications Development	5 (CC)   11 (CE)   13 (CW)
IT Systems & Networks	6 (CC)   15 (CE)   11 (CW)
Operational & Information Technology	11 (CW)
Security System Integration	9 (CE)   12 (CW)

CC – College Central / CE – College East / CW – College West

<sup>^</sup> Pre-requisite subjects: Subjects that are compulsory to pass in order to qualify for a course | Bonus points: CCA bonus points





**SCHOOL OF  
ENGINEERING**

3-Year <i>Higher Nitec</i> Course	College			Minimum Entry Requirements
	Central	East	West	
Applied Food Science		✓		<b>3 GCE 'N' Level Passes:</b> Grade A-D or Grade 1-5 in Mathematics or Science* and two other subjects  <i>Note:</i> <i>*Mobile Robotics, Smart Electrical Technology, IoT Applications, Mechanical Design &amp; Automation, and Mobile Web Applications subjects can be used in lieu of Science for admission to these courses.</i>  OR  <b>2 GCE 'O' Level Grades:</b> Grade 1- 8 in any two subjects  <i>Note for Architectural Technology, Applied Food Science and Chemical Process Technology: Applicants must ensure that they do not have colour appreciation deficiency</i>
Bio-Chemical Technology		✓		
Chemical Process Technology		✓		
Architectural Technology		✓		
Integrated Mechanical & Electrical Design		✓		
Civil & Structural Engineering Design		✓		





3-Year <i>Higher Nitec</i> Course	College			Minimum Entry Requirements
	Central	East	West	
Landscape Management & Design		✓		<b>Completion of GCE 'N' or 'O' Levels</b>  <i>Note: Applicants for this course must ensure that they do not have colour appreciation deficiency.</i>
Facilities Management & Engineering		✓	✓	
Vertical Transportation		✓		
Electrical Engineering		✓	✓	<b>3 GCE 'N' Level Passes:</b> Grade A-D or Grade 1-5 in Mathematics and two other subjects  OR  <b>2 GCE 'O' Level Grades:</b> Grade 1-8 in any two subjects  <i>Note: Applicants must ensure that they do not have colour appreciation deficiency</i>



3-Year <i>Higher Nitec</i> Course	College			Minimum Entry Requirements
	Central	East	West	
Advanced Manufacturing <b>NEW</b>	✓			<b>3 GCE 'N' Level Passes:</b> Grade A-D or Grade 1-5 in Mathematics or Science and two other subjects  OR  <b>2 GCE 'O' Level Grades:</b> Grade 1-8 in any two subjects  Note: *Mobile Robotics, Smart Electrical Technology, IoT Applications, Mechanical Design & Automation, and Mobile Web Applications subjects can be used in lieu of Science for admission to these courses.
Aerospace Engineering <b>NEW</b>	✓			
Marine & Offshore Engineering <b>NEW</b>	✓			
Mechatronics Engineering <b>NEW</b>	✓		✓	
Rapid Transit Engineering <b>NEW</b>			✓	
Automotive Engineering <b>NEW</b>			✓	Completion of GCE 'N' or 'O' Levels
Mechanical Engineering <b>NEW</b>	✓	✓	✓	



# 3-YEAR *HIGHER NITEC* COURSES AGGREGATE POINTS (2026 intake)

Based on Best 4 GCE 'N' Level subjects, including pre-requisite subjects and bonus points<sup>^</sup>.

3-Year <i>Higher Nitec</i> Course	Aggregate Points
<b>Engineering</b>	
Applied Food Science	7 (CE)
Bio-Chemical Technology	3 (CE)
Chemical Process Technology	11 (CE)
Architectural Technology	4 (CE)
Civil & Structural Engineering Design	6 (CE)
Integrated Mechanical & Electrical Design	15 (CE)
Facilities Management & Engineering	15 (CE)   12 (CW)
Landscape Management & Design	9 (CE)
Vertical Transportation	13 (CE)
Electrical Engineering	16 (CE)   11 (CW)

CE – College East / CW – College West

<sup>^</sup> Pre-requisite subjects: Subjects that are compulsory to pass in order to qualify for a course | Bonus points: CCA bonus points





## 3-YEAR *HIGHER NITEC* COURSES AGGREGATE POINTS (2026 intake)

Based on Best 4 GCE 'N' Level subjects, including pre-requisite subjects and bonus points<sup>^</sup>.

3-Year <i>Higher Nitec</i> Course	Aggregate Points
Engineering	
Advanced Manufacturing <small>NEW</small>	New
Aerospace Engineering <small>NEW</small>	New
Marine & Offshore Engineering <small>NEW</small>	New
Mechatronics Engineering <small>NEW</small>	New
Rapid Transit Engineering <small>NEW</small>	New
Automotive Engineering <small>NEW</small>	New
Mechanical Engineering <small>NEW</small>	New

<sup>^</sup> Pre-requisite subjects: Subjects that are compulsory to pass in order to qualify for a course | Bonus points: CCA bonus points





# SCHOOL OF HOSPITALITY

## ONLY AT ITE COLLEGE WEST

3-Year <i>Higher Nitec</i> Course	Minimum Entry Requirements
Culinary Arts	<b>Completion of GCE 'N' or 'O' Levels</b> <i>Note: Applicants are required to clear a pre-entry medical check-up</i>
Pastry & Baking	<b>3 GCE 'N' Passes:</b> Grade 1-5 or Grade A-D in English and two other subjects or two GCE 'O' Grades 1-8 in any two subjects <i>Note: Applicants are required to clear a pre-entry medical check-up</i>
Hospitality Operations	





## 3-YEAR *HIGHER NITEC* COURSES AGGREGATE POINTS (2026 intake)

Based on Best 4 GCE 'N' Level subjects, including pre-requisite subjects and bonus points<sup>^</sup>.

3-Year <i>Higher Nitec</i> Course	Aggregate Points
Hospitality (CW)	
Hospitality Operations	6 (CW)
Pastry & Baking	3 (CW)
Culinary Arts	6 (CW)

CW – College West

<sup>^</sup> Pre-requisite subjects: Subjects that are compulsory to pass in order to qualify for a course | Bonus points: CCA bonus points



# TIMELINE OF EVENTS

Release of  
GCE 'N' Level  
results  
(*Mid Dec*)

Application period:  
**5 calendar days**  
from day of results  
release

DPP application  
for Normal  
(Academic) students

Release of Course  
interview details  
(*Late Dec*)

Check application  
results and decide  
whether to accept  
the offer

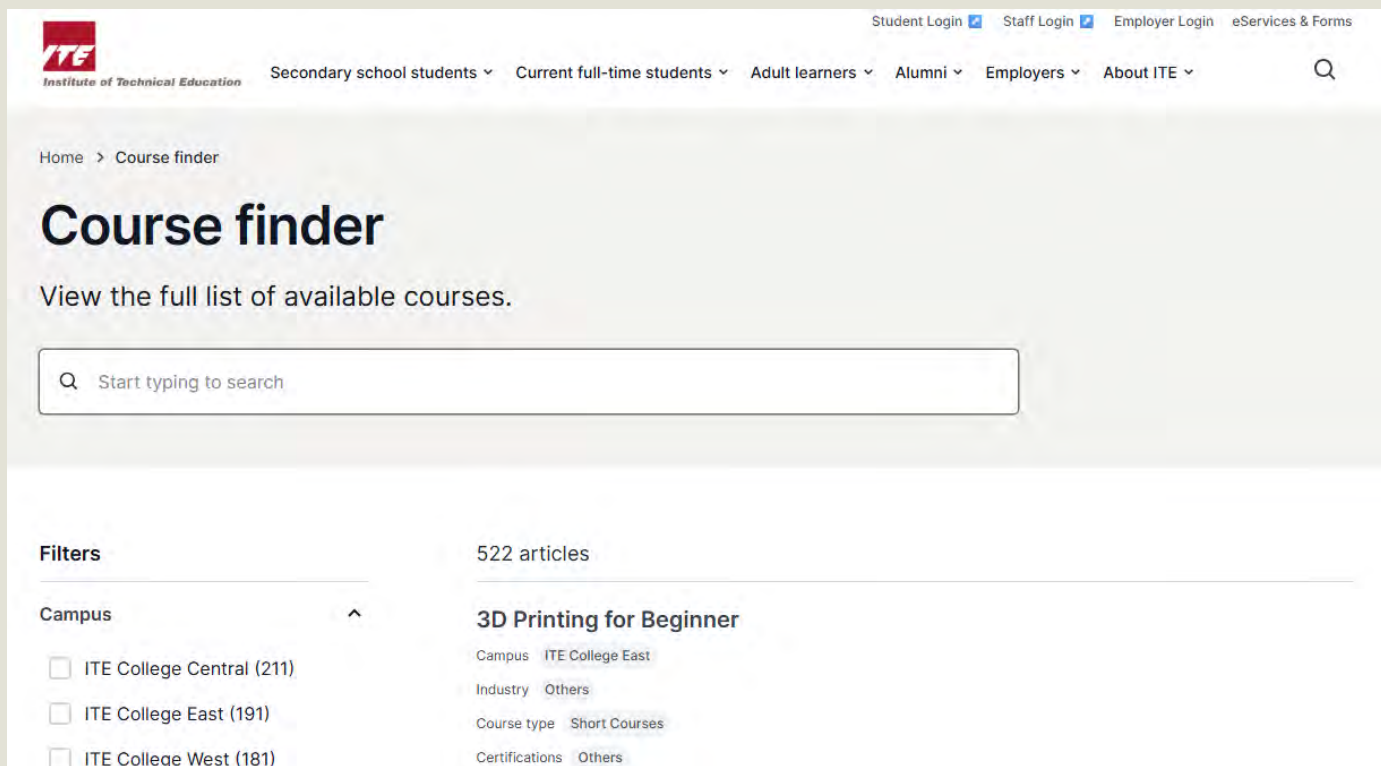
Report to your  
posted College  
and start your  
course (*Early Jan*)

DPP students will  
begin their 10-week  
preparatory course in Jan,  
thereafter they would  
embark on  
their *Higher Nitec*  
course in April



# CHECK OUT OUR ITE COURSE FINDER

Located at <https://www.ite.edu.sg/course-finder>



The screenshot shows the ITE Course Finder website. At the top, there's a navigation bar with the ITE logo and links for Student Login, Staff Login, Employer Login, and eServices & Forms. Below this is a secondary navigation bar with dropdown menus for Secondary school students, Current full-time students, Adult learners, Alumni, Employers, and About ITE. The main heading is 'Course finder' with a subtext 'View the full list of available courses.' Below this is a search bar with the placeholder text 'Start typing to search'. On the left, there's a 'Filters' section with a 'Campus' dropdown menu showing three options: ITE College Central (211), ITE College East (191), and ITE College West (181). To the right of the filters, it says '522 articles' and lists '3D Printing for Beginner' with sub-filters for Campus (ITE College East), Industry (Others), Course type (Short Courses), and Certifications (Others).



<https://for.edu.sg/course-finder>

Scan to find  
out more!





# POSITIVE IMPACT

## ITE grads find doors to good jobs opening wider

Survey shows median pay more than doubled in 10 years; more grads also furthering studies

Sandra Davie  
Straits Education  
Correspondent

Median salary of \$1,200 when they left ITE in 2007.

The top 10 per cent of ITE graduates drew \$4,500 a month and the top 25 per cent, \$3,000 - similar to the average pay of residents here.

Compared with those years when went on to work after secondary school, ITE grads were better off three times as much more a month.

The survey also found that the percentage of ITE grads who went on to study for higher education courses.

The latest graduate employment survey by the Singapore University of Technology and Design (SUTD) and the Ministry of Education (MOE) shows that the median starting salary for ITE graduates in 2017 was \$1,200 a month, up from \$600 in 2007.

The ITE, which offers 97 full-time certificate courses and over 20 diploma courses, takes in about 14,000 students a year. The vast majority - 65 per cent - find them after completing their N levels. About 15 per cent are O-level school leavers. The remainder are students progressing from lower to higher education courses.

The latest graduate employment survey by the Singapore University of Technology and Design (SUTD) and the Ministry of Education (MOE) shows that the median starting salary for ITE graduates in 2017 was \$1,200 a month, up from \$600 in 2007.



ITE grad Alan Gek has completed a degree and is now a sales manager with PNB Insurance.

Alan Gek said: "Clarity in the education system in our students skills that enable them to access good jobs. It also provides them with a strong foundation to go on to further education at some point in their career."

He mentioned having and dedicating resources who helped them well. "The teachers really helped in building our confidence," he said.

ITE graduate Vilasini Govindarajan, 25, a past recipient of an award with ITE Insurance, agreed that ITE opened doors to higher education and good jobs for him.

Mr Vilasini, who left ITE in 2014 after completing a diploma in mechanical technology, went on to Temasek Polytechnic and then to RMIT University in Australia to complete a degree in communication design.

He credited ITE for moulding him into an independent and hands-on learner. "The polytechnic and then at university, I was ahead of the other students because of the industry-relevant and hands-on experience I gained at ITE," he said. "And I wanted to go on to the next level."

## THE STRAITS TIMES

### From ITE to NUS medicine: Ex-dropout makes the grade

23-year-old, who had quit secondary school, re-enters ITE and becomes a medical student

Andrea Lim  
Straits Education  
Correspondent

Twenty-three-year-old Andrea Lim, who had quit secondary school after two years of leaving school, re-enters ITE and becomes a medical student.

She applied for the annual ITE open house in 2016, and was accepted into the ITE diploma in health sciences.

She applied for the annual ITE open house in 2016, and was accepted into the ITE diploma in health sciences.

She applied for the annual ITE open house in 2016, and was accepted into the ITE diploma in health sciences.

She applied for the annual ITE open house in 2016, and was accepted into the ITE diploma in health sciences.



It would be a surprise to see a 23-year-old woman in a white lab coat, stethoscope around her neck, and a name tag that reads "Andrea Lim".

She is a medical student at the National University of Singapore (NUS), where she is studying for her degree in medicine.

She is a medical student at the National University of Singapore (NUS), where she is studying for her degree in medicine.

She is a medical student at the National University of Singapore (NUS), where she is studying for her degree in medicine.

She is a medical student at the National University of Singapore (NUS), where she is studying for her degree in medicine.

She is a medical student at the National University of Singapore (NUS), where she is studying for her degree in medicine.

She is a medical student at the National University of Singapore (NUS), where she is studying for her degree in medicine.

She is a medical student at the National University of Singapore (NUS), where she is studying for her degree in medicine.

## Girl wins gold in engineering category in skills competition in Singapore, first one to do so



Veithara Tan won a silver medal in the trade skills competition in Singapore, the first one to do so in the category.



# DISCOVER ITE

## Customer & Visitor Centres

### ITE HQ & College Central

Address: Blk A, Level 2, 2 Ang Mo Kio Drive, Singapore 567720

Tel: 6590 2211

Email: college\_central@ite.edu.sg

### ITE College East

Address: Administration Block, Level 1, 10 Simei Ave, Singapore 486047

Tel: 6590 2262

Email: college\_east@ite.edu.sg

### ITE College West

Address: Blk 2, Level 2, 1 Choa Chu Kang Grove, Singapore 688236

Tel: 6590 2628

Email: college\_west@ite.edu.sg

\*All Centres are open from 8:30am – 6:00pm,  
Mondays to Fridays (closed on Weekends and Public Holidays)

-  [www.ite.edu.sg](http://www.ite.edu.sg)
-  [facebook.com/ITESpore](https://facebook.com/ITESpore)
-  [instagram.com/itespore](https://instagram.com/itespore)
-  [tiktok.com/@itesingapore](https://tiktok.com/@itesingapore)
-  [youtube.com/itespore](https://youtube.com/itespore)
-  [x.com/ITESpore](https://x.com/ITESpore)
-  [linkedin.com/school/ite-spore](https://linkedin.com/school/ite-spore)

© Institute of Technical Education, Singapore (2026). All rights reserved. No part of this publication may be reproduced, distributed, stored in retrieval system, or transmitted in any form or by any means, including photocopying, recording or other electronic and mechanical methods, without the prior written permission of the Institute of Technical Education, Singapore.

