



**SINGAPORE
CUSTOMS**

MEDIA RELEASE

Immediate

11 June 2026

THREE COMPANIES AND THREE INDIVIDUALS CHARGED OVER ALLEGED SCHEME TO FALSELY DECLARE ORIGIN OF GOODS WORTH OVER S\$23 MILLION

Singapore, 11 June 2026 – Three Singapore-registered companies and three individuals have been charged today for their alleged involvement in a scheme to falsely declare the origin of mattresses exported from Singapore to the United States of America (USA), in an apparent attempt to circumvent import duties imposed by the USA.

2 Brighture Et Riche Pte Ltd, Brighture Et Riche (Int) Pte Ltd and Zenova International Pte Ltd, and Singaporeans Loh Yew Kong, 68, Leong Yu Fong, 41, and Loh Chen Sing Darren, 37, have been charged for one or more offences relating to false declarations, false statements and incorrect trade descriptions under the Regulation of Imports and Exports Act 1995 and the Regulation of Imports and Exports Regulations.

3 Singapore Customs commenced investigations in February 2025 after receiving information that mattresses exported from Singapore to the USA had been falsely declared as Singapore-origin goods, when their country of origin was revealed to be the People's Republic of China. Investigations uncovered an alleged scheme that operated between August 2022 and June 2025, involving goods with a total value of over S\$23 million.

4 Court proceedings are ongoing.

5 Singapore Customs takes a serious view of the falsification of trade declarations or the misuse of Certificates of Origin. Such conduct undermines the integrity of international trade documentation and can damage Singapore's standing as a trusted and reliable global trading hub.

6 Under the Regulation of Imports and Exports Act 1995, any person who is found guilty of making false declarations or statements required under the Act or its regulations — including in cargo clearance permits — may be liable on conviction to a fine not exceeding S\$10,000 or to imprisonment for a term not exceeding two years, or both. Any person found guilty of causing incorrect trade descriptions to be applied to exported goods may be liable, on a first conviction, to a fine not exceeding S\$100,000 or three times the value of the goods in respect of which the offence was committed, whichever is the greater, or imprisonment for up to two years, or both.

7 Under the Regulation of Imports and Exports Regulations, any person who is found guilty of making a false statement when applying for Certificates of Origin may be liable, on a first conviction, to a fine not exceeding S\$100,000 or three times the value of the goods in respect of which the offence was committed, whichever is the greater, or imprisonment for up to two years, or both.

Annex: Photographs of the case

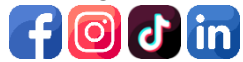
-END-

About Singapore Customs

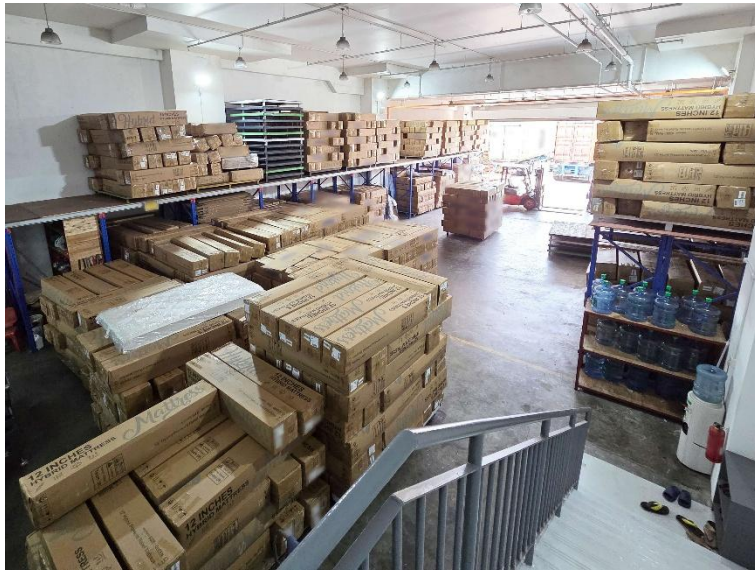
Singapore Customs protects revenue and facilitates trade for Singapore's economic growth while continuously striving to be a world-leading customs authority. As a partner of the Ministry of Finance, we ensure compliance with customs and tax regulations, safeguard the nation's financial interests, and combat illicit trade activities. We also enable seamless trade by simplifying customs processes, building global trade connectivity, and maintaining Singapore's position as a trusted global trading hub. Guided by our values of integrity, commitment, courage, responsiveness and teamwork, we strive for excellence with a professional and innovative team. Together, we ensure revenue and enable trade, fostering a thriving Singapore economy.

To find out more, visit our website at www.customs.gov.sg

Follow Customs on:



Annex



Warehouse storing some of the mattresses involved.



Alleged incorrect trade descriptions, specifically “Made in Singapore” stamps, applied on the packaging of exported mattresses.