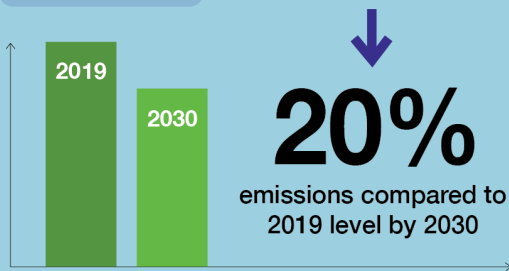


Building Capacity, Enhancing Sustainability



Reducing emissions in aviation

DOMESTICALLY



TARGET NET ZERO EMISSIONS BY 2050



INTERNATIONALLY

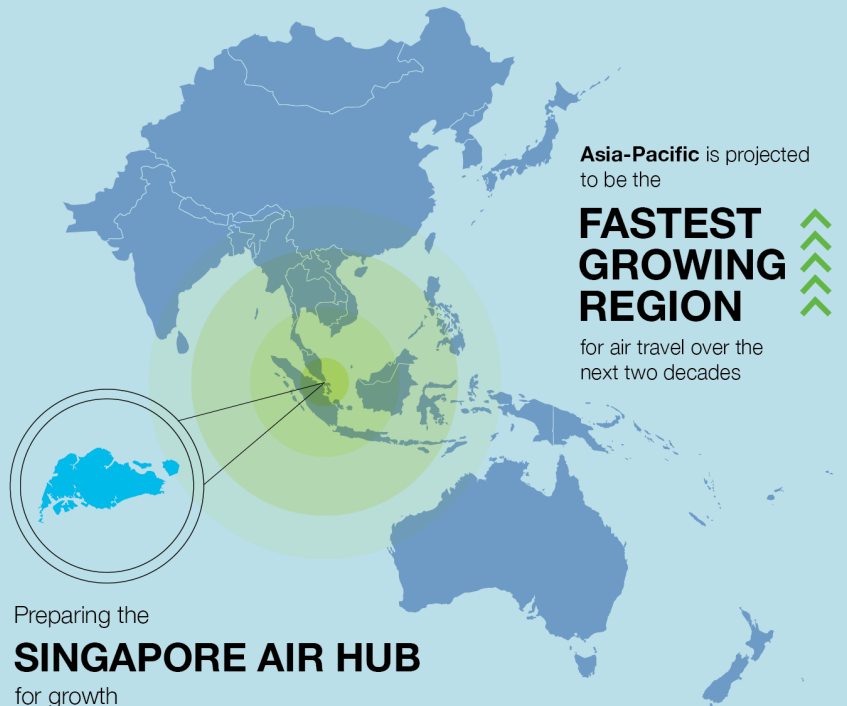
Flights departing Singapore required to use

SUSTAINABLE AVIATION FUEL (SAF) FROM 2026

1% SAF target in 2026, goal to ↑3-5% by 2030, subject to global developments. Strive for balanced approach to develop SAF ecosystem & maintain competitiveness

Steady recovery of air traffic

Expect passenger traffic at Changi to
RECOVER TO PRE-PANDEMIC LEVELS by end-2024



Expanding T2 & building T5 for growth

T5 will enable Changi to serve an additional
50 million passengers per annum (mppa)

T2 expansion increased Changi's capacity by **5 mppa**,
bringing the airport's total capacity to **90 mppa**

↑ Changi T5

Developing a future-ready and resilient workforce

- Plan for future aviation workforce with industry partners and unions
- Enhance capabilities and upskill workers to seize opportunities

