



CYBER TIP ENABLE 2FA AND USE STRONG PASSPHRASES



HOW YOU CAN STRENGTHEN YOUR ACCOUNT SECURITY:

- Enable 2FA for your accounts. 2FA can be a One-Time Password (OTP) from a digital token or biometrics (e.g., fingerprint or facial recognition).



- Use random passphrases with at least 12 characters and a combination of uppercase and lowercase letters, numbers, and symbols (e.g., Adopted3CATs&dogs).

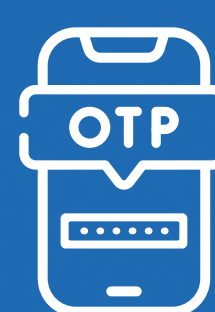


Adopted3CATs&dogs

- Use a reputable password manager and secure it with a strong passphrase.



- Never share your OTPs or passwords with anyone. Always verify unsolicited messages or calls directly with family, friends, or official sources.



Get more cyber tips at csa.gov.sg