

## ANNEX A: P\*DA 2025 RECIPIENTS

### Designer of The Year

*\*In alphabetical order*

#### 1. Ar. Alan Tay



**Designation:** Principal Partner, Formwerkz Architects

**Design Discipline:** Architecture

**Ar. Alan Tay:** “Design intelligence is an essential skill for the future — it is a sense of criticality and an ability to analyse a situation. Whoever you are, if you have design intelligence, you will be equipped to make a judgment based on a critical appraisal of problems.”

**Jury Citation:** Both an educator and architect, Alan Tay has created a consistent body of work over the past two decades in Singapore, China, and Malaysia. He has contributed to the architectural industry through his exceptional craft-making and commitment to exploring how architecture can address deeper issues, influencing the way we live and perceive the world around us. Whether it is a mosque, house, or office building, Tay demonstrates clarity of thought in his architectural designs and leads rigorous investigations to create highly contextual designs that respond to tropical environments.

From the Cloister House in Malaysia to the Al-Islah Mosque in Singapore, he seeks to create architecture that is not only memorable but also inspires deeper reflections on conventional typologies, forms, and norms. Tay also contributes to shaping the future of architecture education and discourse in Singapore as an educator, curator, and mentor to aspiring architects. The jury commends Tay for his dedication to honing his skills and sensibility in architectural craft-making, and for creating impactful, sensitive designs for all.

## 2. Gabriel Tan



**Designation:** Principal, Gabriel Tan Studio and Studio Antimatter; Co-founder, Origin Made

**Design Disciplines:** Product and Industrial Design

**Gabriel Tan:** “It is important that our designs bring comfort, or better social interactions, or better awareness of sustainability questions. We try to bring something different to the table such that it’s not a banal experience of a product but feels unique and satisfying in different ways. As Singaporean designers, we don’t have any cultural baggage. We can explore any topic we want because there is no expectation of what designers from Singapore should design.”

**Jury Citation:** Gabriel Tan’s work exemplifies the highest standards of craftsmanship, innovation, and an entrepreneurial spirit on the global stage. A self-made designer with a focused and internationally recognised portfolio, Tan has successfully bridged cultures and disciplines, collaborating with leading brands such as Herman Miller, B&B Italia, and Ariake.

His deep engagement with traditional craftsmanship – from Japanese timber to Portuguese artisanship – demonstrates a profound respect for heritage while pushing the boundaries of contemporary design. Despite being based in Portugal, Tan maintains a presence in Singapore, where his contributions to the design industry serve as an inspiration to emerging talent.

His journey, from co-founding Outofstock to establishing his own brand, Origin Made, showcases his vision and resourcefulness in building a design practice that is both commercially successful and culturally significant. With a strong body of work recognised internationally, he has made a significant mark everywhere he has been, flying the Singapore flag high on the global stage.

Tan represents the very essence of a Global Singaporean – a designer whose work speaks to international audiences while remaining deeply connected to his roots, making him a deserving award recipient and a role model for future generations.

## **Design of the Year**

*\*In alphabetical order of project name*

### **1. 21 Carpenter**



**Company/Organisation:** WOHA Architects

**Design Discipline:** Architecture

**Impact Areas:** Enabling Economic Transformation, Raising Quality of Life, Advancing Singapore Brand, Culture and Community, Making Ground-breaking Design Achievements

**Ar. Richard Hassell, Founding Director, WOHA Architects:** “21 Carpenter is about a kind of heritage experience where it doesn't feel like you're playing make-believe, pretending you're back in the past. It's not a stuffy heritage experience because it never was that kind of place. It was a place of business, a node in a financial network across the world. Our take on it was that it should feel like it's a useful space for the modern-day traveller.”

**Jury Citation:** 21 Carpenter is a well-crafted boutique hotel that interweaves and juxtaposes

the contemporary rear block with four conserved shophouses in a cohesive way that honours its history. The elegant articulation of its five-storey extension floats above the heritage structure, contrasting with the charming shophouses beneath. Its chamfered corner creates a terrace that brings air and daylight into the existing building.

As one moves through the conserved shophouse, the carefully positioned skylights frame glimpses of the modern extension above, creating a subtle interplay between the old and new. In the new extension, heritage elements of the old building are revealed and reframed, unveiling new viewpoints and understanding of the building's past as a remittance house. Throughout the building, there is a strong sense of storytelling that reflects the building's heritage. One can find glimpses of history such as the Chinese labourers' inscriptions from their remittance letters on the perforation of the facade screens.

The jury commends the team's design finesse, evident at every level of the project – from its bold massing and sculptural form to the refined detailing of interiors and material articulation.

## 2. Bird Paradise



**Company/Organisation:** Mandai Wildlife Group in collaboration with RSP Architects Planners & Engineers

**Design Discipline:** Experience Design

**Impact Areas:** Enabling Economic Transformation, Raising Quality of Life, Advancing Singapore Brand, Culture and Community, Making Ground-breaking Design Achievements

**Rucha Khanderia, Head of Design (Bird Paradise), Attraction Design, Mandai Wildlife Group:** “For Bird Paradise, we had the opportunity to do away with the traditional taxonomy-based displays and focus on holistic environmental education instead. Experience is one of the most powerful tools for education because people engage in an emotional way, not just in an intellectual way.”

**Ar. Suen Wee Kwok, Executive Director, RSP Architects Planners & Engineers:** “When we design in a way that invites exploration and wonder, people respond with curiosity and care, as though they are having a childlike experience again. I’m proud of the quiet intent behind the design and the way it influences without being seen. As you walk through the park as a visitor, you can enjoy it without knowing all the hard work that has gone on behind the scenes. Nothing is left to chance. We call this ‘the design of the invisible hand’.”

**Jury Citation:** Bird Paradise offers a world-class, immersive experience that redefines urban zoos and animal conservation. With a strong focus on bird conservation, it creates a rich and engaging journey, particularly for families with young children. The design was carefully conceived and executed, resulting in a seamless and interactive experience where visitors can connect closely with nature. Through the observation of and engagement with birds in a way that feels natural and dynamic, visitors gain a deeper understanding of avian species and their ecosystems.

The integration of wildlife, landscape, and visitor engagement presents an innovative model for conservation, pointing towards the future of animal preservation in urban settings. The experience at Bird Paradise is both entertaining and thought-provoking. By blending education, interaction, and carefully designed spaces, the project offers a forward-thinking vision for the role of zoos and wildlife experiences in modern cities.

### 3. Delta Sport Centre



**Company/Organisation:** Red Bean Architects

**Design Discipline:** Architecture

**Impact Areas:** Raising Quality of Life, Advancing Singapore Brand, Culture and Community

**Ar. Teo Yee Chin, Managing Partner, Red Bean Architects:** “I don't believe that all buildings need to be handled like jewels. The people using them can change, and the surroundings change with them. I feel that we need to keep our eyes peeled, to see what new things need to be done, so that a building can adapt to the changing conditions while retaining its familiarity.”

**Ar. Zeeson Teoh, Partner, Red Bean Architects:** “With the idea of stitching the whole sports complex to the surrounding context, it has become a community space catering to sports users as well as residents from the neighbouring areas. These urban stitches were less about dramatic interventions and more about considerate incisions. We tried to connect across roads, remove obstructions, and create more layering of circulation so people can engage with the site in a way that's natural, intuitive, and inclusive.”

**Jury Citation:** Delta Sport Centre is a successful adaptive reuse project that creates impactful

outcomes for its surrounding communities by retaining and re-using existing structures with small, deliberate design interventions. One of the key interventions is a second-storey thoroughfare that connects the development seamlessly with its surroundings. Linking the sport centre directly to existing overhead bridges, the nearby MRT station, and the bus stop, this distinctive thoroughfare is clear and well-managed, serving as a connecting node for residents living at opposite sides of the sport centre.

Sports facilities such as the swimming pools, hockey stadium, and badminton hall, which were previously operated separately, have been brought together into one cohesive complex. The jury applauds the architect for the thoughtful design which cleverly stitches and enhances the urban fabric with an engaging sport centre in response to the changing social and physical contexts.

#### 4. KartaCam 2



**Company/Organisation:** Grab

**Design Discipline:** User Experience Design

**Impact Areas:** Enabling Economic Transformation, Raising Quality of Life, Advancing Singapore Brand, Culture and Community, Making Ground-breaking Design Achievements

**Low Ko Wee, Senior Design Manager, Geo, Grab:** “Our goal has always been to solve user problems and deliver value. In terms of design, we have a core belief in turning complexity into simpler and better experiences. This doesn’t mean reduction. It means starting with a deep understanding of systems, user needs, and technical constraints, followed by the careful removal of anything that doesn’t serve the user.”

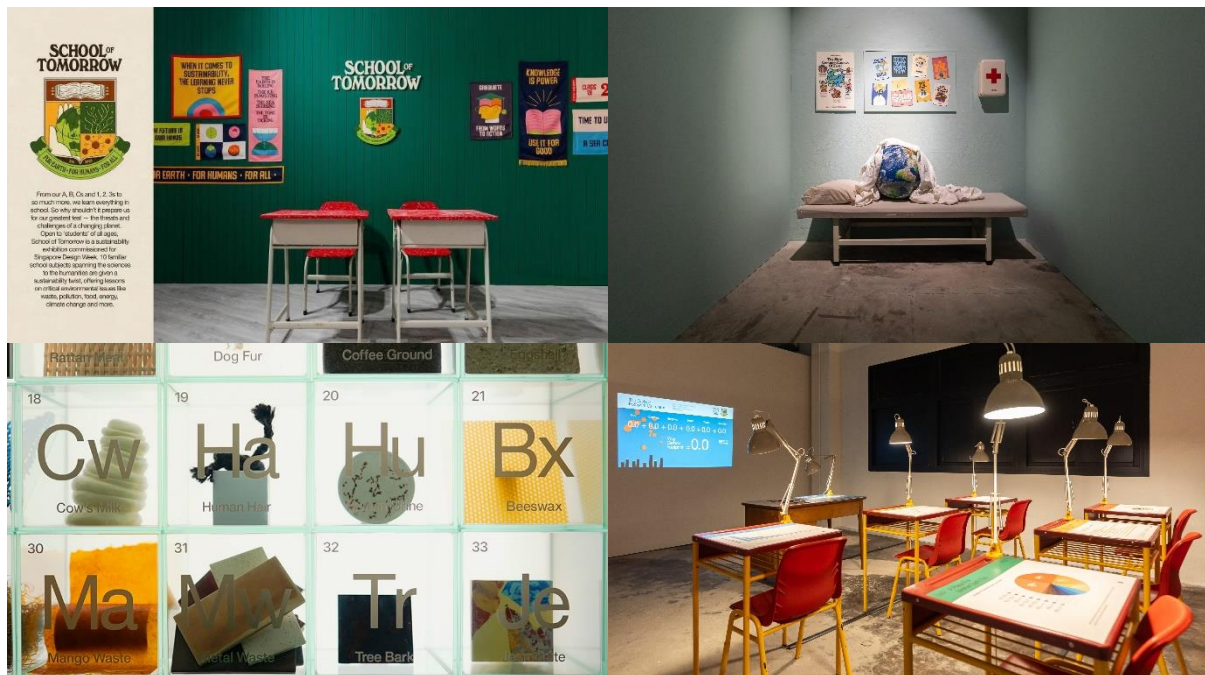
**Ellen Chen, Lead Product Designer, Geo, Grab:** “During the product planning phase, one of our key goals was to gather user feedback from testing on the road as early as possible. This iterative approach allowed us to refine the design based on real user input from around Southeast Asia before we finalised the design.”

**Jury Citation:** The KartaCam 2 is built on a strong existing business model, featuring exceptional design that addresses a specific Southeast Asian challenge. The innovation refines existing technology, making it smaller, more affordable, and portable. By leveraging

Grab's network, it creates detailed maps of hard-to-reach areas, meeting the essential needs of everyday navigation for drivers.

The system integrates mapping within Grab's ecosystem, allowing drivers and delivery personnel to earn by contributing to the mapping process. This not only benefits local communities within Southeast Asia but also brings significant value to other international markets. It is a well-executed, simple solution to a complex problem, improving livelihoods and creating broad social and economic impact.

## 5. School of Tomorrow



**Company/Organisation:** Kinetic Singapore

**Design Discipline:** Exhibition Design

**Impact Areas:** Raising Quality of Life, Advancing Singapore Brand, Culture and Community, Making Ground-breaking Design Achievements

**Gian Jonathan, Partner, Kinetic Singapore:** “School is something most people can relate to. Using school as a vehicle tied in very well with the overall concept, because it created an opportunity for learning about climate and environmental issues. We kept all the subjects you’d expect at school, but with a twist. In mathematics class, for example, you would learn how to calculate your carbon footprint and what you could do to offset it. It was familiar, but also not familiar.”

**Astri Nursalim, Partner, Kinetic Singapore:** “We hosted preschools at the exhibition, and it was very heartwarming for me to see the children’s excitement and happy reactions to *School of Tomorrow*. Later on, when I went down to the preschool, the kids wanted to tell me about all the solutions they remembered from the exhibition, like cassava plastic and mushrooms. I feel like we managed to speak to the future generations.”

**Jury Citation:** School of Tomorrow goes beyond a conventional showcase of sustainability – it creates an engaging, inclusive, and thought-provoking learning environment. Rather than simply curating a collection of sustainable design practices, Kinetic took things a step further by building a school, ensuring their sustainability ethos was embedded in every aspect of the exhibition’s execution.

Their approach is playful, light-hearted, and accessible, making complex issues of sustainability more engaging for audiences of all ages, and stimulating deeper reflection on our impact on the planet. The exhibition is commendable not just for its message but also for the way it embodies its principles, demonstrating resourcefulness and careful attention to detail despite limited resources.

Kinetic's ability to blend play, humour, and critical thinking into their work allows them to connect with audiences beyond traditional activism or design statements. This work is a testament to the power of design in shaping conversations about sustainability.

## 6. Silver Pride Lion Troupe



**Company/Organisation:** NextOfKin Creatives

**Design Discipline:** Service Design

**Impact Areas:** Raising Quality of Life, Advancing Singapore Brand, Culture and Community, Making Ground-breaking Design Achievements

**Rodney Loh, Founder, NextOfKin Creatives:** “Singapore is a place where we keep on innovating. We keep on pushing and wanting to punch above our weight. But often, it’s all these little roots, roots of scarcity, roots of ethnicity, that allow us to punch above our weight. We have all this cultural heritage, with all these passions, nuances, and rituals. If we forget them, then we don’t have a common foundation from which to propel forward while retaining our identity as a multiracial society.”

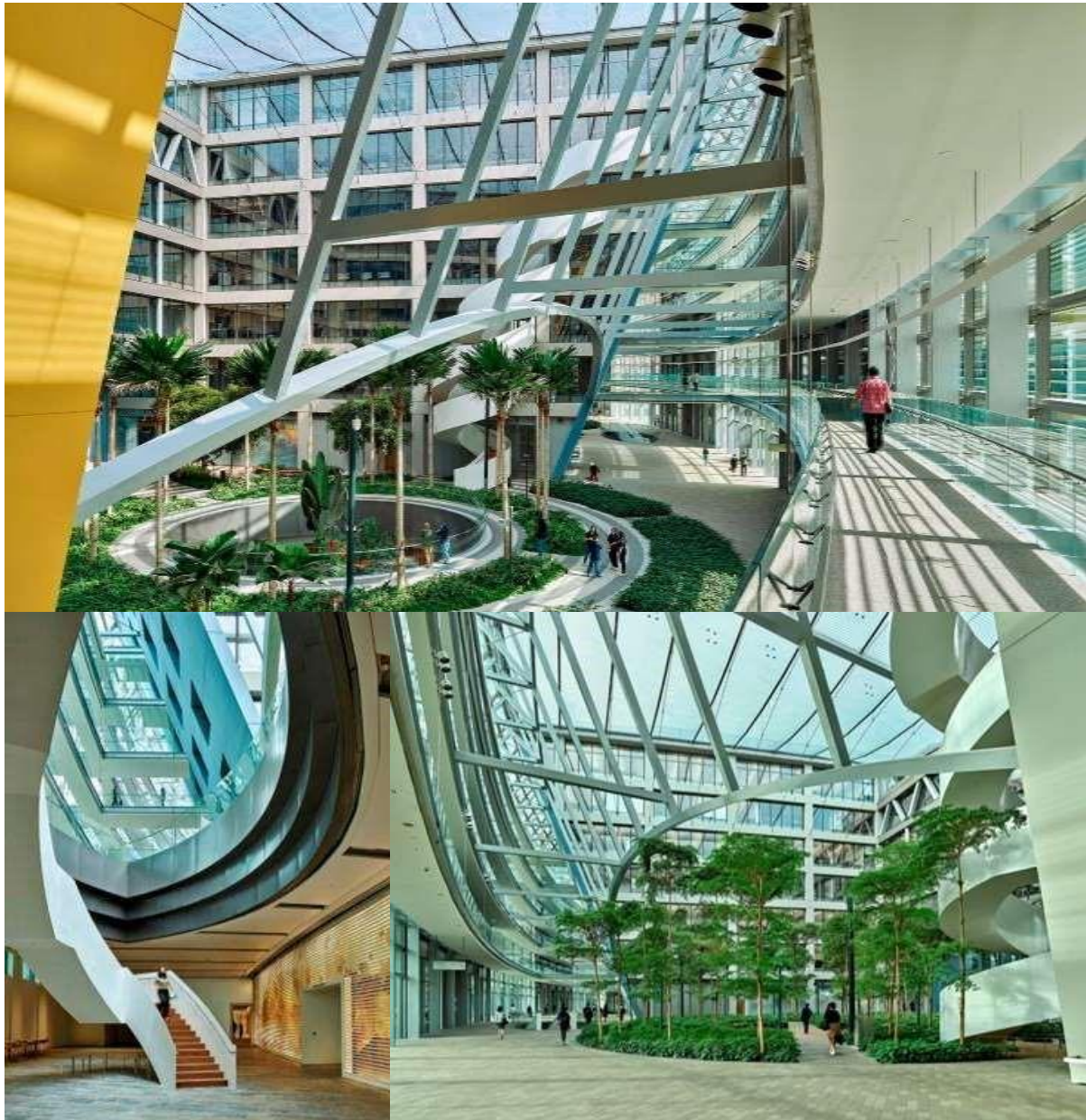
**Lynn Wong, Founder, Bridging Generations:** “We adapted traditions in such a way that the choreography respected heritage and culture while also becoming more inclusive. The project shows how we have made something historic not only relevant but also able to solve the pressing issues of today. Heritage art forms can be a solution for a national healthcare issue and can bring the community together.”

**Jury Citation:** Silver Pride Lion Troupe is a groundbreaking initiative that redefines active ageing by integrating Singapore’s cultural heritage into senior engagement. By adapting lion dance – a tradition deeply rooted in physicality and community – the project provides an innovative and culturally resonant way to promote physical well-being, social connection, and skill-building, particularly among hard-to-reach male seniors.

With a thoughtful and inclusive design process, including physiotherapist involvement and adaptable roles, the initiative ensures accessibility across different abilities while challenging the infantilisation of senior care. The team’s sensitivity to tradition, coupled with their agility in addressing gaps, allows the project to bridge generations and formalise cultural practices in new, meaningful ways.

Beyond its immediate impact, Silver Pride Lion Troupe addresses broader societal stigmas surrounding ageing, fostering a sense of belonging and empowerment among participants. Its community-driven approach and scalable model offer potential for replication both locally and internationally, making it a powerful and culturally significant contribution to rethinking ageing in modern society.

## 7. SJ Campus



**Company/Organisation:** Safdie Architects in collaboration with SJ Group

**Design Discipline:** Architecture

**Impact Areas:** Enabling Economic Transformation, Raising Quality of Life, Advancing Singapore Brand, Culture and Community, Making Ground-breaking Design Achievements

**Charu Kokate, Senior Partner, Safdie Architects:** "We believe that meeting someone in a garden setting changes the dynamic – people tend to be more open, more relaxed, and positive. Natural light filtering through the building, seamless connection between indoor and outdoor spaces, access to nature, smaller building footprints that encourage visibility and

interaction – all of this directly contributes to people's overall wellbeing. We aimed to create a space that naturally encourages openness, interaction, and a supportive culture.”

**Jury Citation:** SJ Campus reconceives the traditional corporate headquarters as a campus that integrates harmoniously with the public realm. The series of office blocks are connected by a publicly accessible street-like atrium spine, featuring amenities and a direct link to the upcoming MRT station for the wider community. The design features naturally lit, sheltered courtyards that offer inviting spaces for workers and residents to gather and relax, while the tapered office block profiles channel daylight into the interiors with reduced glare.

The upper levels of the buildings are floated on pilotis to preserve the large and unique tree specimens on site, while allowing the lower vegetation to grow uninterrupted below the elevated structures. The building also employs sustainable design strategies such as solar collection, rain gardens, and bioswales. The jury commends the team for creating a meaningful office campus typology that serves both its employees and the wider community.