

Special Mention

Experiencing TPRS through a New Lens

Team members

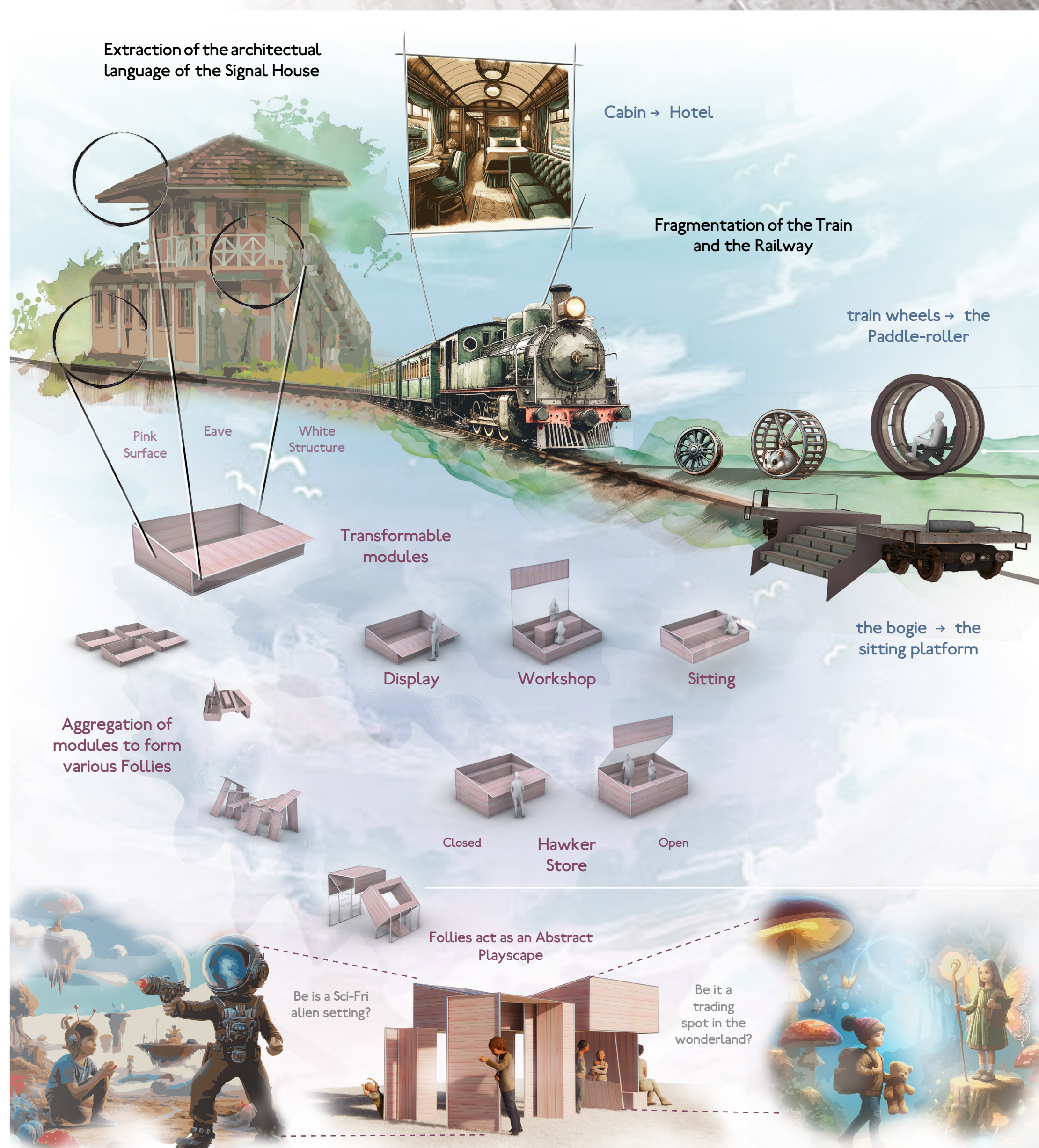
General Public (Hong Kong) - Tim Tang Ho Yin, Christina Kong Ka Yu

Description

Introducing new captivating public vistas as well as play experiences along the Rail Corridor, the proposal offers opportunities for the exploration of Tanjong Pagar Railway Station's rich history, while transforming the site into a community hub which acts as a catalyst for community interaction, innovation and recreation.

Jury's Comments

The proposal had a strong concept of experiencing the site through a new lens and an interesting recurring motif of reflection and perspective. For instance, there were unique ideas to reflect the front façade of TPRS on the tiles at the station forecourt and to introduce new vantage points for the public to view the murals in the central hall and the platforms through the atrium skywalk and ring bridge along the train platforms respectively.



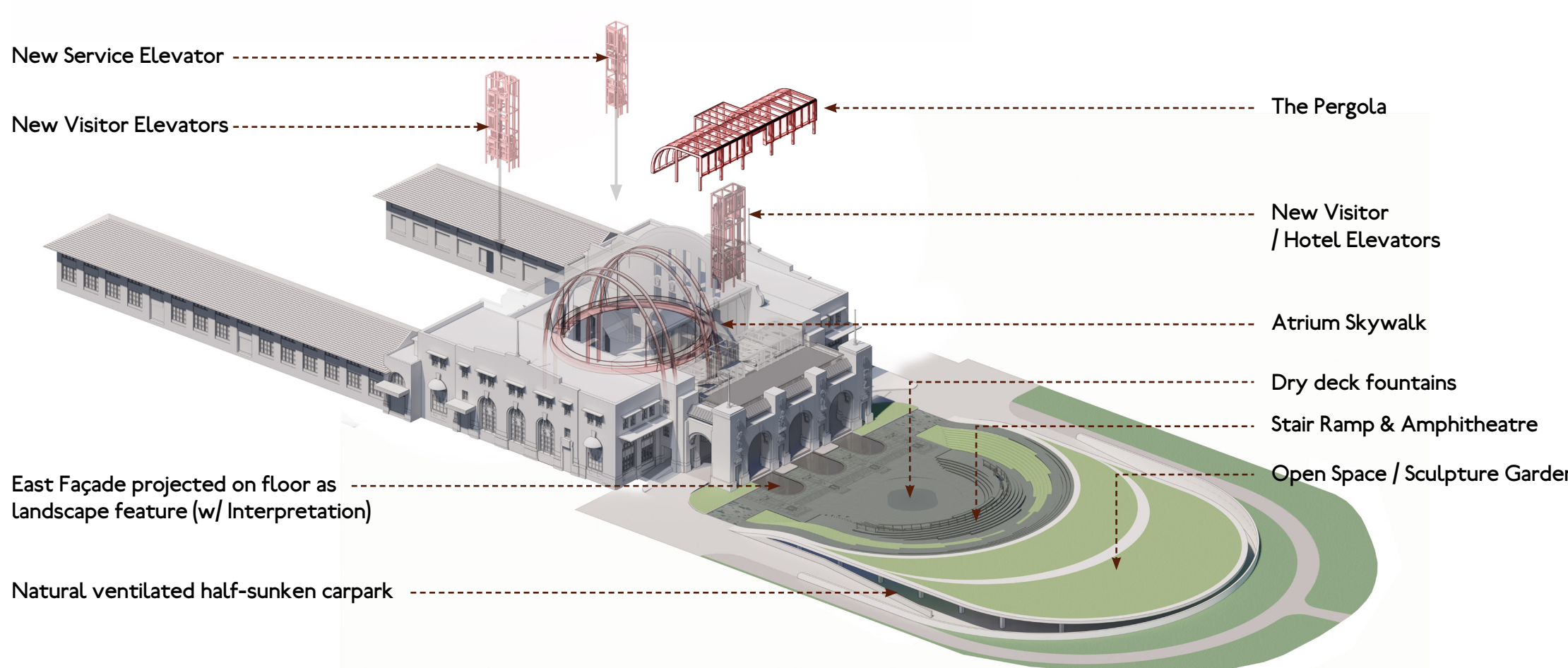
The railway is envisioned as the string of a necklace, with the fragmented, extracted, and adapted forms of the train and signal house as the pearls. Together, they create a myriad of spatial potentials without rigid definitions of use, in the form of the follies and modular stores, paddling roller, etc. Children can imagine their wonderland in the abstract playscape formed by the follies, while adults can transform the modules for various purposes throughout the day, bringing life and versatility to the heritage site.



A ring-shaped Atrium Skywalk offers unique views of the iconic wall murals, while the ground floor transforms into a vibrant social space. The Singapore Mobility Gallery and Station History Gallery seamlessly blend with F&B and retail, creating a living museum experience where history meets contemporary offerings.



An elevated turfed area, situated east of the former Tanjong Pagar Railway Station, is seamlessly connected by a series of stair-ramps. This elevated platform offers visitors a unique vantage point to admire the allegorical marble statues and crest insignias adorning the east façade of the former station building.



Experiencing TRPS through a New Lens

Beyond a Transit Hub : A Destination for Connection, Exploration, and Inspiration

Our proposal envisions the transformation of Tanjong Pagar Railway Station (TPRS) into a bustling community hub that celebrates its rich heritage while embracing a dynamic future. Seamlessly weaving heritage preservation with innovative programming, from the exhilarating "Rail Bike" experience to the breathtaking Station Overlook and Atrium Skywalk, visitors can immerse themselves in its rich history.

The meticulously restored original station hotel offers a unique 14-room designer boutique experience on the second floor. Repurposed platforms cater to diverse tastes, with the northern block transformed into a bustling Hawker Centre—a beloved Singaporean tradition—and the southern block housing a Design Incubation Centre, fostering innovation for design startups. This juxtaposition of heritage and cutting-edge creativity creates a dynamic environment where visitors can savor delicious local fare and explore the future of Singaporean design.

The transformation of Tanjong Pagar Railway Station transcends mere revitalization. It becomes a vibrant social tapestry, where the past and future intertwine. Imagine exploring the station's rich heritage through innovative exhibits, indulging in the city's vibrant culinary scene at the Hawker Centre, or witnessing the future of design unfold at the Incubation Centre. All seamlessly interwoven with captivating public spaces, breathtaking vistas, and playful experiences like the "Rail Bike" adventure. The reimagined Tanjong Pagar Railway Station is poised to become a Singaporean landmark, a catalyst for connection, creativity, and inspiration for generations to come.



Pathways tracing the remnants of the old train tracks create a natural setting where visitors can experience the thrill of arrival and departure by pedaling "Rail Bikes" from the platform's end to the "Signal Cabin." The "Signal Cabin," a symbol of the station's operational past, will be given a new lease on life as a cafe and art gallery, continuing its role as a space for community interaction. It also marks the final stop for the exciting "Rail-Bike" adventure.



This visually striking ring bridge offers a distinct, elevated vantage point of the original platform architecture. Serving as a photogenic landmark, it captures the station's grandeur in a single frame. The bridge also allows visitors to appreciate the intricate details of the platform canopy up close, while providing access to the Roof Meadow and surrounding areas.



Modular stores offering flexible configurations for shops, cafes, or seating will line the former train platforms. Alongside repurposed train cabins as resting spots, a green strip filling the train tracks creates a versatile outdoor event venue and the starting point for the exciting "Rail-Bike" adventure.



The East elevation of TPRS is mirrored in the landscape design, with etched copper plates interpreting the unique character of each motif. The Forecourt will be transformed into a sunken carpark topped with a lush sculpture garden and an accessible amphitheater. A series of cascading ramps will create a gentle slope connecting the carpark to the station, blurring the lines between building and landscape.

