

1st Place

RAIL LIFE

Team members

General Public (Singapore) - Kenneth Chiang

Description

Envisioning the Tanjong Pagar Railway Station as a key recreation node for the future Greater Southern Waterfront, the proposal transforms the site through a series of diverse leisure programmes focused on five key themes, namely Community, Arts & Culture, Culinary, Health & Wellness and Sports & Fitness. The wide variety of uses are also intended to synergise with nearby arts institutions in the adjacent Tanjong Pagar Distripark, while strengthening the appeal to and fostering new connections across diverse age groups.

Jury's Comments

The proposal presented a well-rounded and coherent programming strategy for a synergistic mix of uses across the site. The strength of the scheme lay in its creative harmonisation of old and new architectural elements to introduce new gathering spaces for the community. For instance, the front forecourt was raised as a landscaped lawn becoming a central communal space for events and gatherings, under which were tucked the major M&E services for the re-purposed TPRS building. For the building itself, a key feature was the reinstatement of the original double-volume spaces along its northern side to create a tiered seating area for the public. The scheme also proposed the addition of movable decks with shelters in between the original train platforms to create modular spaces for various community uses. There was also a clear proposal to stitch TPRS and the rest of the Rail Corridor through creating a weaving community trail interspersed with play spaces for sports and recreation. Another feature of the scheme was the introduction of an infill structure along the northern edge of the site creating a layered space for community use and as a billboard for events, though the scale and form of such a structure would need further assessment in relation to its sensitivity to surrounding residential developments along Spottiswoode Park Road.

RAIL LIFE TANJONG PAGAR

Rail Life is envisioned to be a community recreation node in the upcoming Greater Southern Waterfront district. It caters to a large segment of visitors by providing offerings for diverse forms of leisure. The reimagined Station seeks to activate the entire site through clustered programming and varied scales of interventions. A total of five programmatic clusters will be established on the site and arranged in a linear order. They are Community, Arts & Culture, Culinary, Health & Wellness and Fitness. Laid in order from the front of the old station down to the start of the Rail Corridor. In doing so, it is hoped that TPRS will not just become an exciting recreation destination for people to go to, but become a new nexus to connect people and places.

With its proximity to green networks, a new MRT station and housing estates, Rail Life seeks to be a car-lite institution, encouraging active mobility. It also hopes to synergise with nearby arts institutions in the adjacent Tanjong Pagar Distripark to create a new arts district.

Approaching the historic Railway building, visitors are greeted by a curved landscape bowl that replaces the carpark. Below it lies M&E services, while a new public park sits above. The gently curved landscape forms a natural seating area that faces the majestic Railway building creating a new public space for community events and performances. Upon entering the Main Building, the cavernous passenger hall plays host to exhibitions and indoor events. While a large part of the building's interiors are retained and restored, the maze of hotel rooms are simplified to form Arts and culture spaces like artist studios, galleries and a bookshop cum library. A floor slab, which was a latter-day addition, where the old restaurant was located is removed, reinstating a grand double height space which now hosts a Forum.

The old Mail Warehouse now plays host to culinary and food programmes, containing a local produce market, cooking labs, a food court and gourmet kiosks. The south warehouse is flanked externally on one side with alfresco dining on the train platforms and a nostalgic food street on the other.

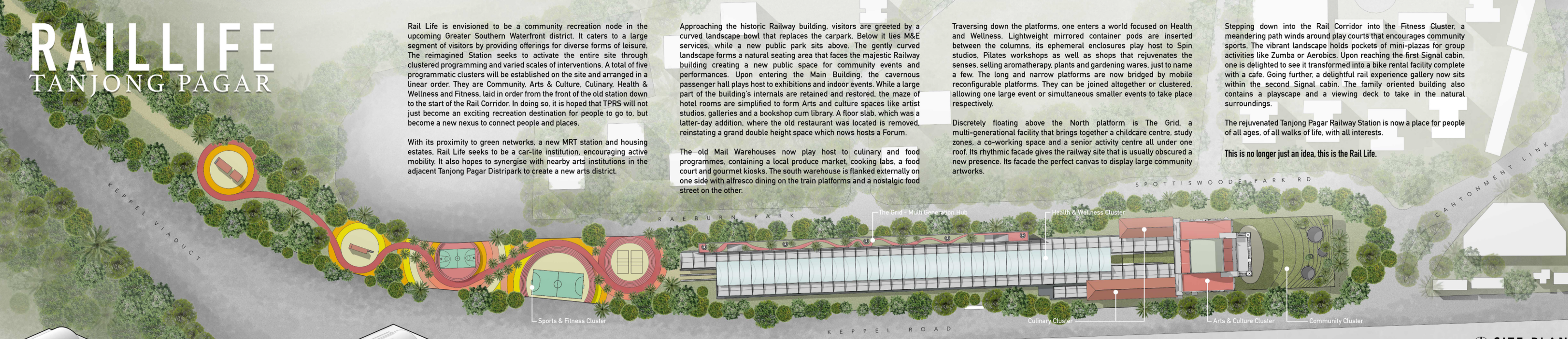
Traversing down the platforms, one enters a world focused on Health and Wellness. Lightweight mirrored container pods are inserted between the columns, its ephemeral enclosures play host to Spin studios. Pilates workshops as well as shops that rejuvenates the senses, selling aromatherapy plants and gardening wares, just to name a few. The long and narrow platforms are now bridged by mobile reconfigurable platforms. They can be joined altogether or clustered, allowing one large event or simultaneous smaller events to take place respectively.

Discretely floating above the North platform is The Grid, a multi-generational facility that brings together a childcare centre, study zones, a co-working space and a senior activity centre all under one roof. Its rhythmic facade gives the railway site that is usually obscured a new presence. Its facade the perfect canvas to display large community artworks.

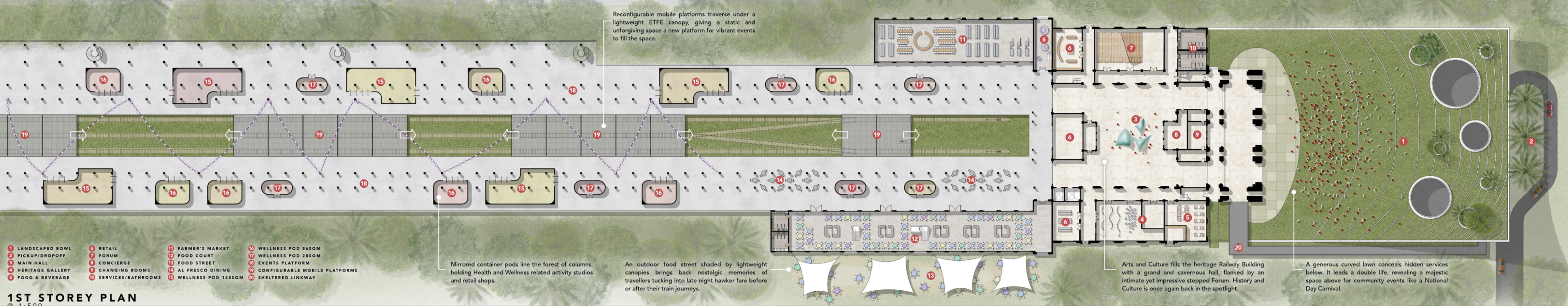
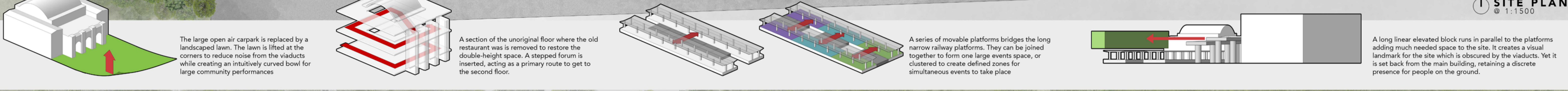
Stepping down into the Rail Corridor into the Fitness Cluster, a meandering path winds around play courts that encourages community sports. The vibrant landscape holds pockets of mini-plazas for group activities like Zumba or Aerobics. Upon reaching the first Signal cabin, one is delighted to see it transformed into a bike rental facility complete with a cafe. Going further, a delightful rail experience gallery now sits within the second Signal cabin. The family oriented building also contains a play space and a viewing deck to take in the natural surroundings.

The rejuvenated Tanjong Pagar Railway Station is now a place for people of all ages, of all walks of life, with all interests.

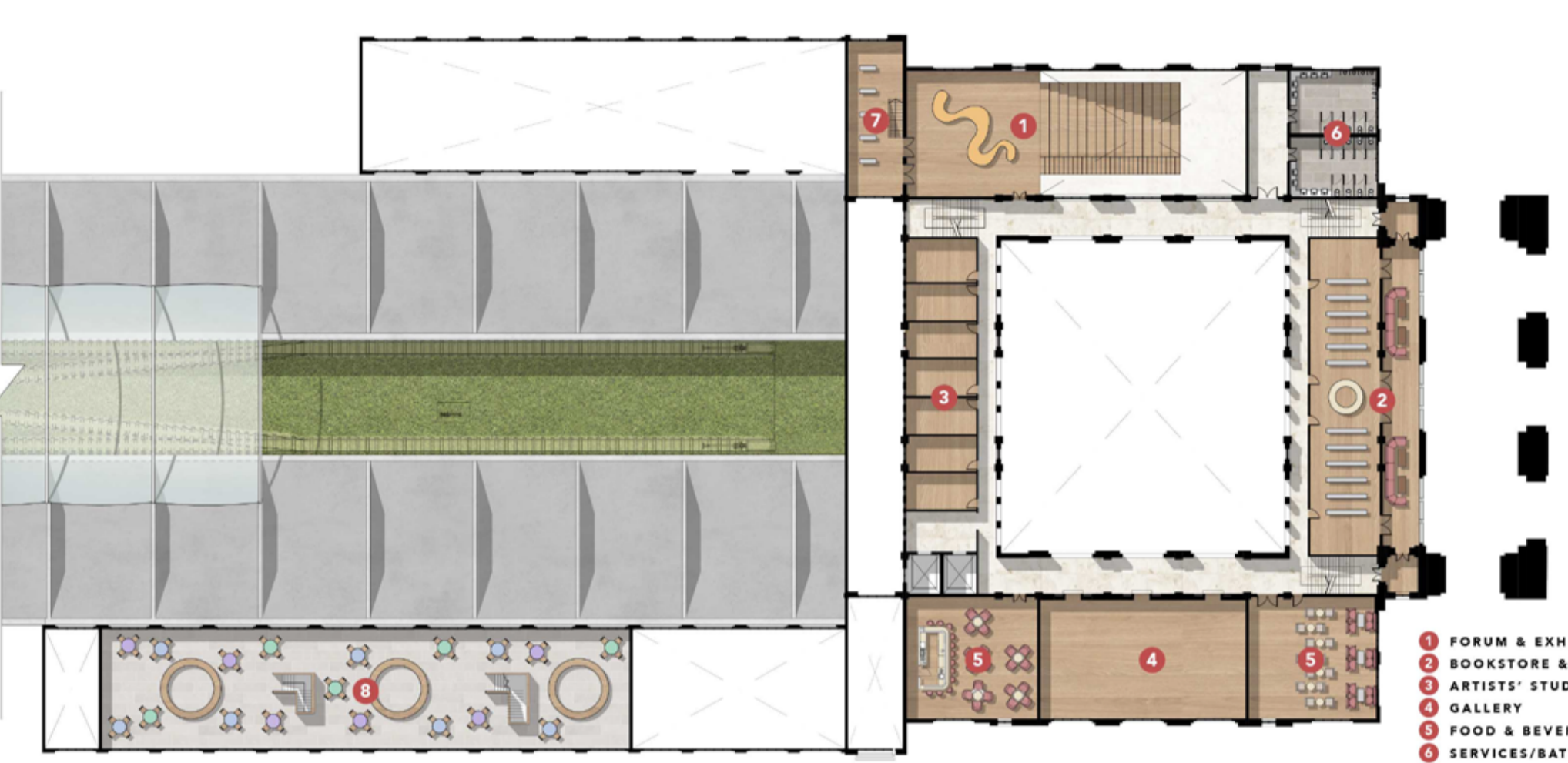
This is no longer just an idea, this is the Rail Life.



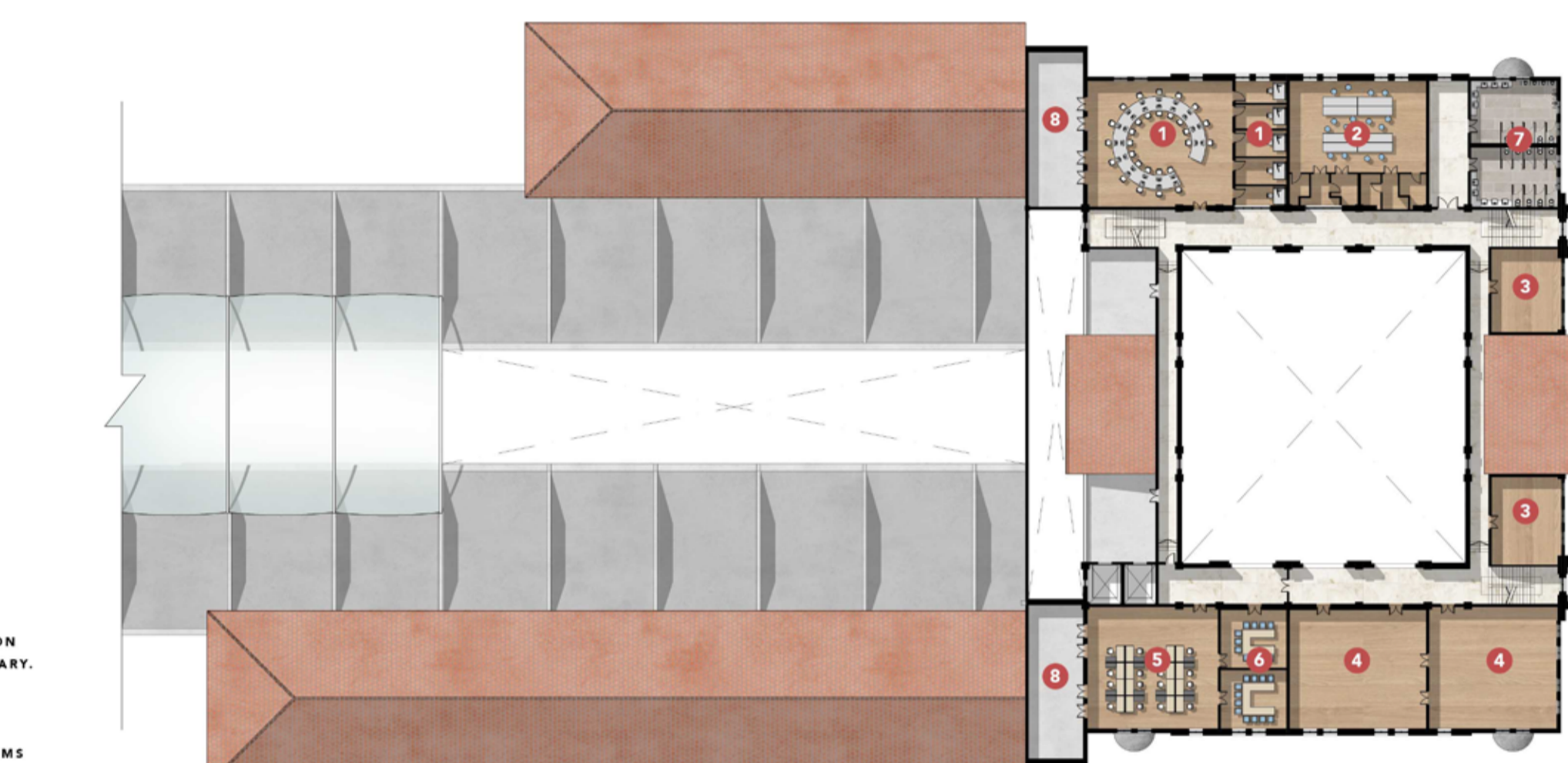
SITE PLAN
@ 1:1500



1ST STOREY PLAN
@ 1:500



2ND STOREY PLAN
@ 1:500



3RD STOREY PLAN
@ 1:500

Building	Level	Room	Area (SQM)	Cumulative GFA (SQM)	Land Area (SQM)	
Community Green Box	L1	Landscape Box	1000	4000	4000	
	Culinary Warehouse	L1	Mechanical & Electrical Rooms	1700		
		L1	Main Hall	851		
	Health & Wellness Platforms	L1	Heritage Gallery	196		
		L1	Food & Beverage	125		
		L1	Retail	370		
		L1	Forum	210		
		L1	Concourse	56		
		L1	Changing Rooms	83		
		L1	Service/Seals	91		
L1		Circulation	590			
L1		Forum + Exhibition Space	219			
L1		Bookstore + Library	315			
Arts & Culture Main Building	L2	Food & Beverage	225	5599	2325	
	L2	Arts Studio	152			
	L2	Gallery	188			
	L2	Service/Seals	88			
	L2	Circulation	441			
	L2	Multi-Media Lab	253			
	L2	Handicraft Workshop	140			
	L2	Gallery	260			
	L2	Training/Seminar Room	140			
	L2	Gallery	240			
Signal Station 1	L1	Arts + Retail Park	1726			
	L1	Events Platform	10224	15475	15475	
	L1	Two Platforms Green Inclusion of Configurable Platforms	3425			
	L1	Basement Court, Wood-Carved Park, Bean Volleyball Court, Landscaped	10200	10200	10200	
	L1	Rita Retail + Workshop	41	84	1780	
	L1	Cafe	43			
	L1	Rail Experience Gallery	110			
	L1	Technical Classrooms	50	226	1940	
	L1	Observation Deck	66			
	L1	Childcare Centre (CCP)	1000			
Multi-Generational Hub - The Grid	L2	Study Zone	1000	6240	Land Area allocated under Platform Area	
	L2	Co-Working Workspaces	1140			
	L2	Senior Activity Centre	1000			
	Roof	Outdoor Terrace	2080			



A long linear block runs parallel and floats over the North Railway platform. It houses facilities for people of all age groups as well as for existing and incoming residents living in the Greater Southern waterfront. Its rhythmic facade takes reference from the surrounding buildings which display large billboards. The unassuming facade is turned into a gigantic canvas which allows community art to be displayed from time to time, creating a visual landmark for the largely obscured railway site.



A new contoured landscaped bowl creates a unique setting for large community events and performances, with the heritage of the Old Railway Station acting as a stunning backdrop. All this while concealing Mechanical and Electrical rooms below, transforming and activating a visually utilitarian function into a vibrant public space.



The original floor slab inserted during a past Addition and Alteration to the building is removed, restoring the double volume space of what was once the restaurant. A forum is inserted into the grand space and brings together people from all walks of life to share and learn new things.



The cavernous passenger hall is sensitively restored befitting its memory as a stately National Monument. Its flexible open layout remains a suitable venue for a variety of events such as an exhibition below.



A transparent and lightweight ETFE roof provides shelter from the elements while retaining the openness of the space. Mobile platforms that bridge both Railway Platforms can be joined together to host large events, or act singularly to create intimate moments like visitors enjoying tunes from baskets.



A jogging and cycling track meanders through the various playcourts before curving around the first Signal Cabin. It is adapted into a bicycle rental and repair workshop, complete with a cafe, acting as the starting point or a pitstop for park users embarking on the Rail Corridor trail.



The second Signal Cabin is adapted into a family-oriented rail experience centre, complete with interactive exhibits, a viewing deck and a play space for the whole family to enjoy.