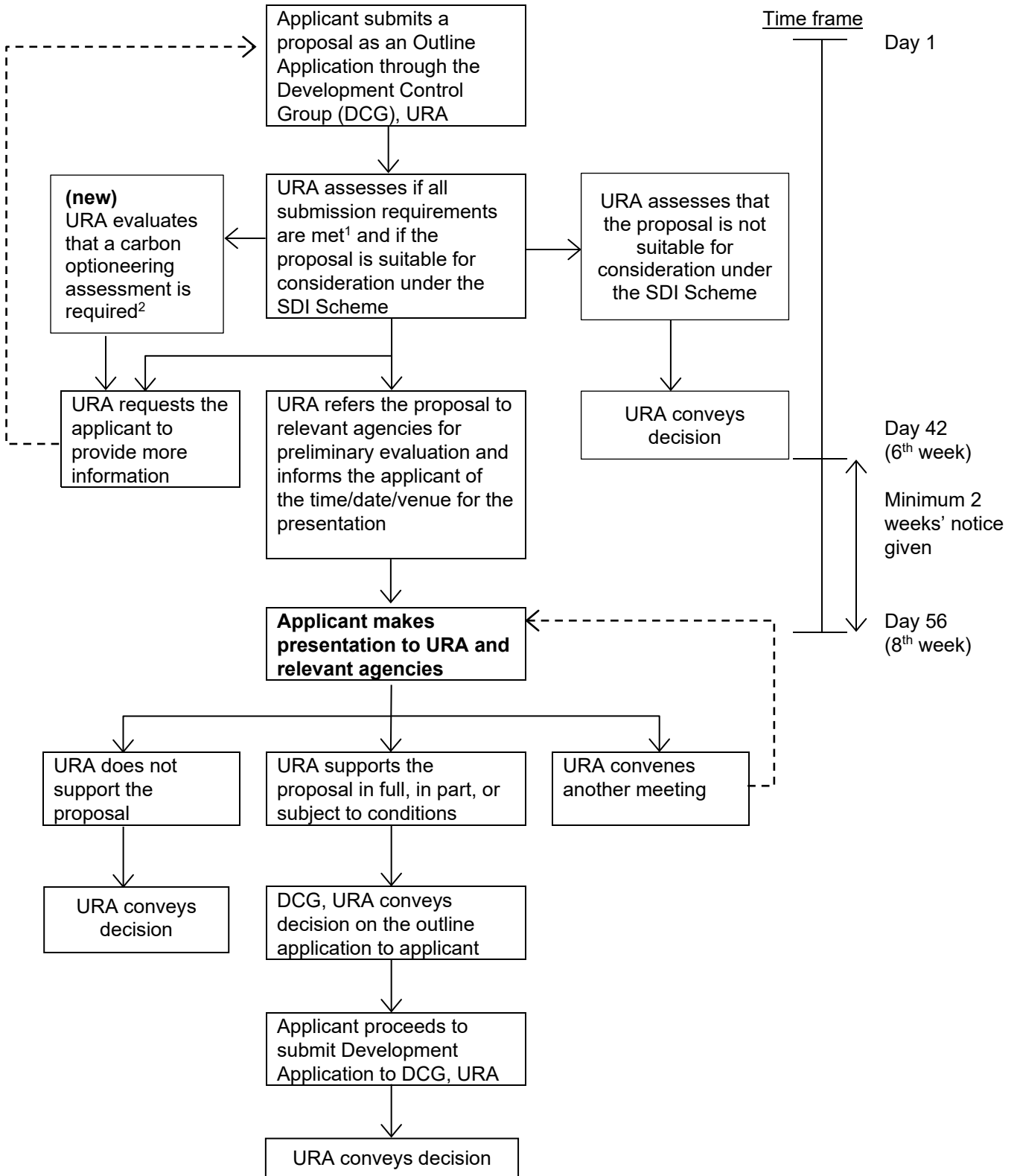


WORK FLOW FOR THE EVALUATION OF CASES SUBMITTED UNDER THE STRATEGIC DEVELOPMENTS INCENTIVE SCHEME



Additional notes on sustainability requirements (new)

¹ Including the new requirement of submitting a Sustainability Statement as part of the Outline Application (see Appendix 1-1, Part III)

² Depending on the information provided within the Sustainability Statement, applicant may be required to submit a carbon optioneering assessment (see Appendix 1-5) as part of the subsequent Development Application