

3rd Place

Tapestry of Reawakened Spaces

Team members

ACME Space Ltd (United Kingdom) - Emily Chan, Javier Gonzalez Acedo, Friedrich Ludewig, Thomas Soo, Chuxiao Wang

Description

Inspired by the concept of a 'tapestry', the proposal seeks to rejuvenate and connect neglected spaces through diverse physical transformations. The design of the spaces weaves together a rich tapestry of history, nature, community and spirit, giving the site a new lease of life.

Jury's Comments

The scheme challenged the imagination in creating new opportunities for the public to appreciate the TPRS building in ways that were not originally intended, and was bold and ambitious in allowing the community to explore different parts of the building that were not accessible nor exposed given its former use. This scheme has pushed the boundaries in modifying the interior spaces of the TPRS building by removing the original second floor hotel rooms within the main railway station building to create a bright and inviting arrival courtyard to the central hall. It also proposed the removal of more recent additions such as the floor slabs and rear hotel extensions within the building to create a double-volume gallery space and sunset terrace respectively. The overall scheme was thought-provoking and prompts discussions of what design strategies can legitimately be employed, and which historical features of the building should be retained or allowed to be altered without affecting its architectural integrity, while the building is put to a new use.



The new arrival Courtyard where art and nature flourish



Interstitial garden with repurposed track sleeper as a performance platform

TAPESTRY OF REAWAKENED SPACES

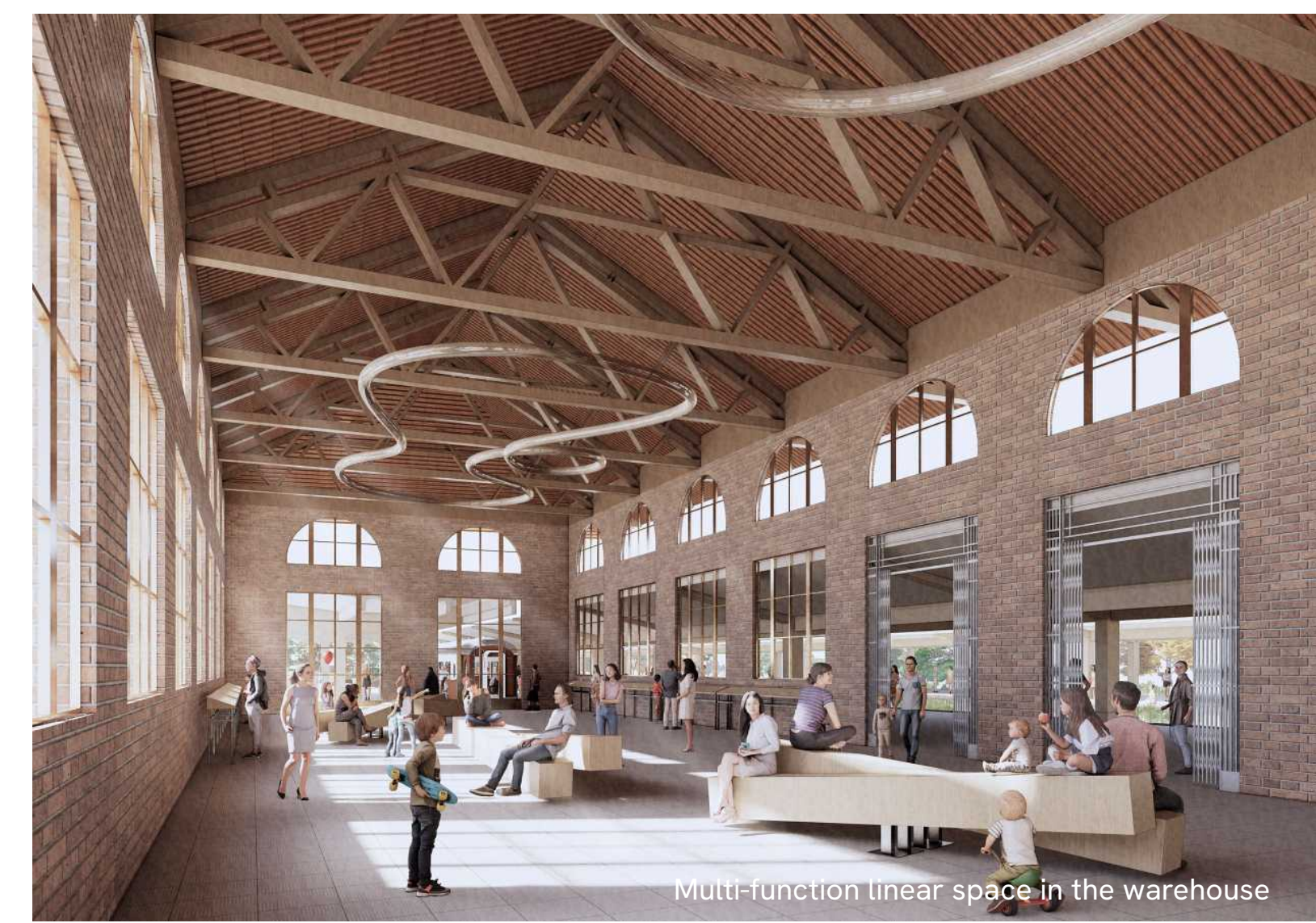
The concept of "tapestry" symbolises a woven story of our interconnected history, cherished memories and a shared vision for the future. This tapestry intertwines the threads of the past and future to form a cohesive narrative that honors the legacy of the Tanjung Pagar Railway Station.

Our aim is to "reawaken" a series of spaces to reflect the rediscovery and revitalisation of this site that have been neglected. This reawakening signifies the emergence of these spaces anew, breathing life into the forgotten past and reimagining their potential for the future.

The spaces are designed along these four themes of reawakening:

- Reawakened Memory** - the collective memory of the rail travel is preserved by curating spaces that reflect and celebrate the station's history.
- Reawakened Spirit** - provide spiritual nourishment through art and play, fostering a deep sense of well-being, creative expression and connection.
- Reawakened Community** - centers on revitalising the social fabric that binds us all and encourage interaction, collaboration and shared experiences.
- Reawakened Nature** - where nature takes root again, transforming this site into an oasis of ecological diversity & seamless integration with Rail Corridor.

Together, these reawakened spaces weave a rich tapestry of history, nature, community and spirit; bringing these railway dreams into reality and ensuring they remains a vibrant, vital part of the community for generations to come.



Multi-function linear space in the warehouse



Reimagined traces of the old Rail Corridor tracks



Cross section



New lease of community life around the old signal cabin



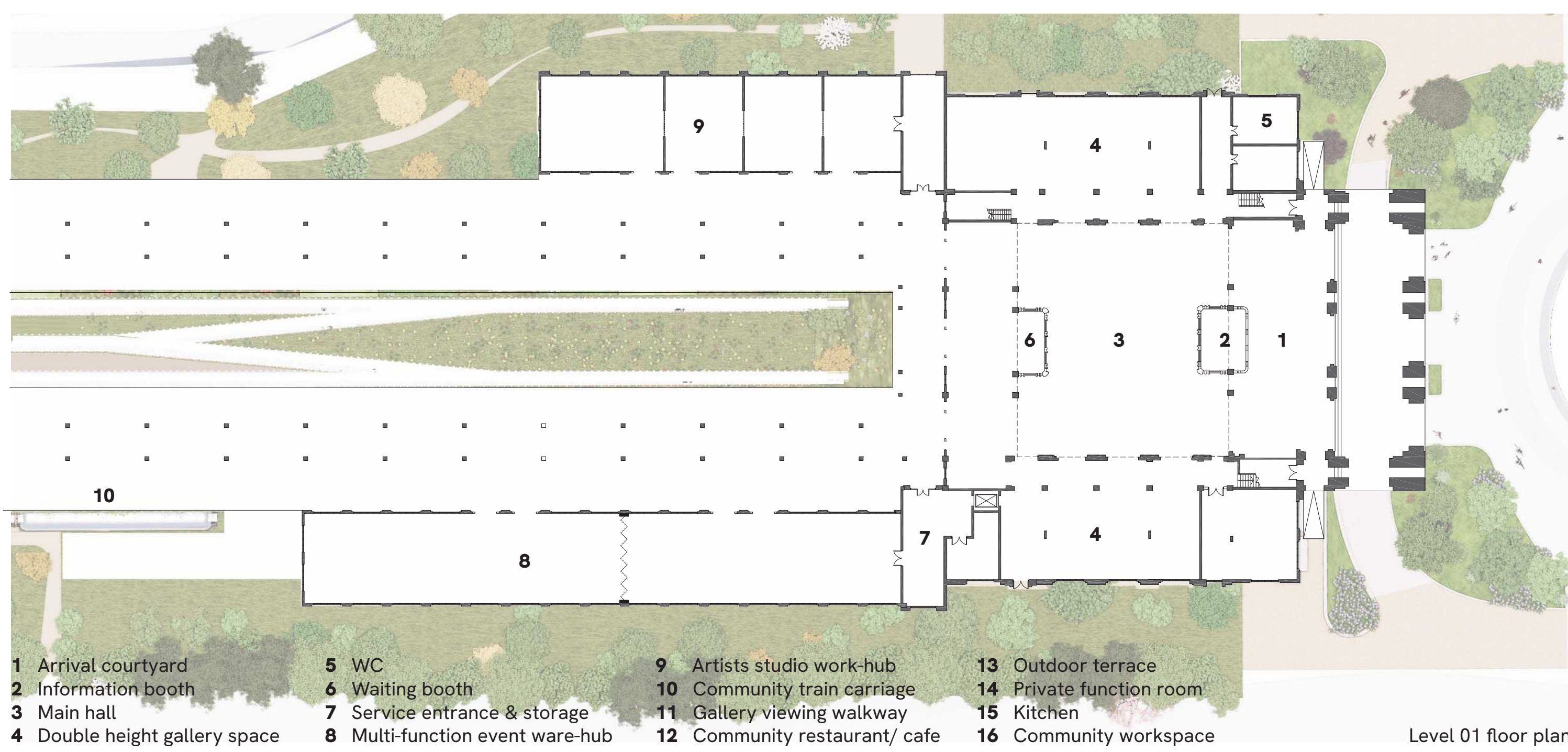
Activated forecourt with landscape terrace and fountain playspace



Viewing walkway towards the double height gallery spaces

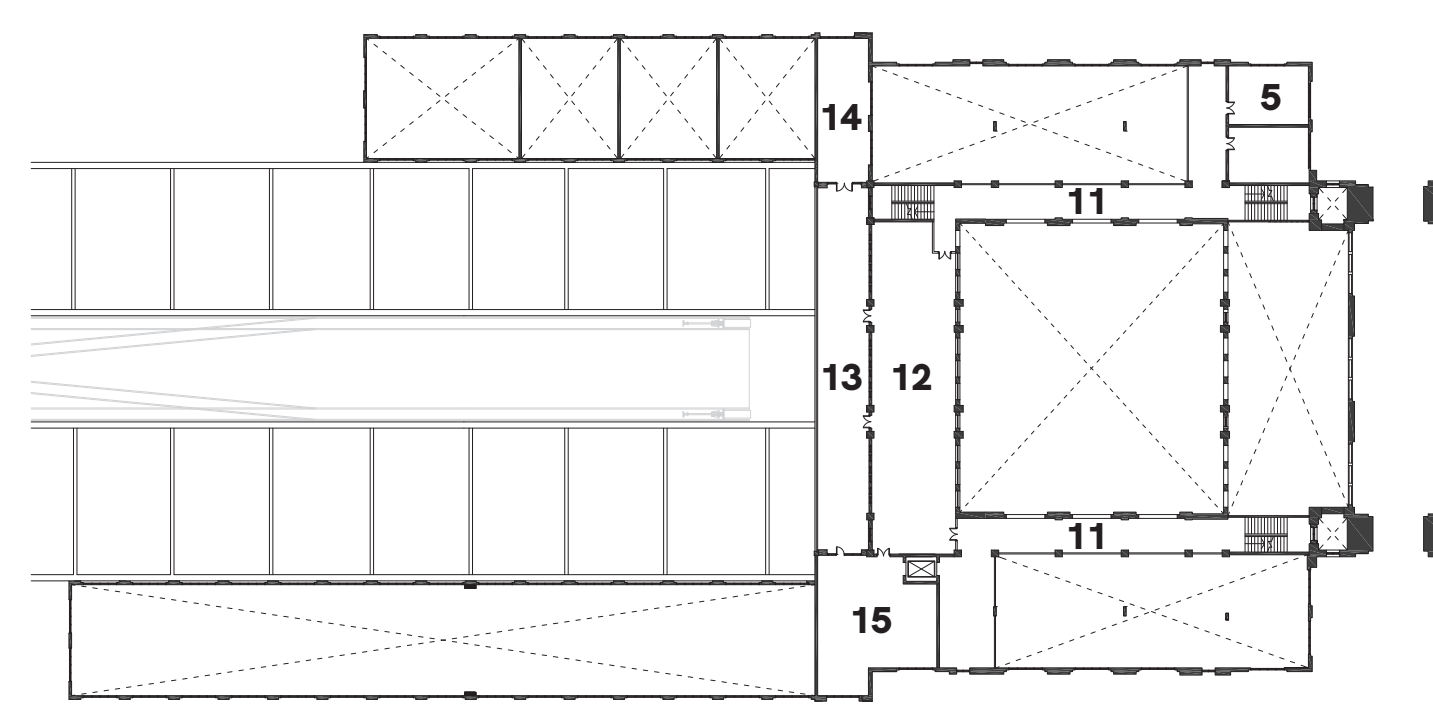


F&B terrace with Vista towards the Rail Corridor and beyond

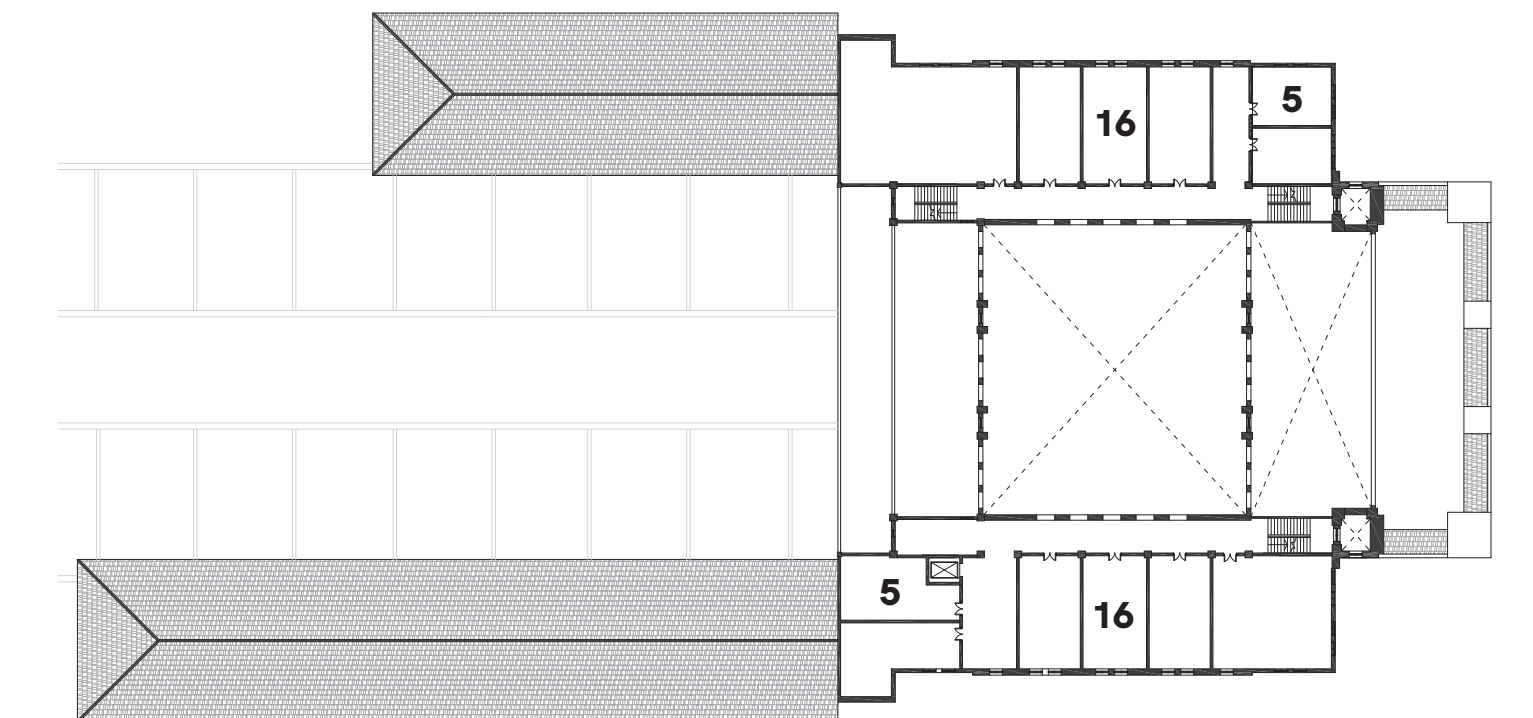


- | | | | |
|-------------------------------|---------------------------------|-------------------------------|--------------------------|
| 1 Arrival courtyard | 5 WC | 9 Artists studio work-hub | 13 Outdoor terrace |
| 2 Information booth | 6 Waiting booth | 10 Community train carriage | 14 Private function room |
| 3 Main hall | 7 Service entrance & storage | 11 Gallery viewing walkway | 15 Kitchen |
| 4 Double height gallery space | 8 Multi-function event ware-hub | 12 Community restaurant/ cafe | 16 Community workspace |

Level 01 floor plan



Level 02 floor plan



Level 03 floor plan



Longitudinal section



Overall site view and landscaping