

*2<sup>nd</sup> Place*

# 0km Hub

## **Team members**

PTW Architects (United States of America) - Shawlon Hsieh, Sarah Kenny, Letty Lau, Zishi Li, Zida Liu, Raffie Samach, Zeynep Ugur

## **Description**

The concept of a “0 km hub” alludes to the Tanjong Pagar Railway Station as a starting point where different spatial identities converge, referencing the start of the 24km Rail Corridor as well as where urban and wilderness meet. The proposal envisions a series of four zones that reinforce these identities, celebrating the site’s rich history while introducing modern infrastructure and sustainable interventions.

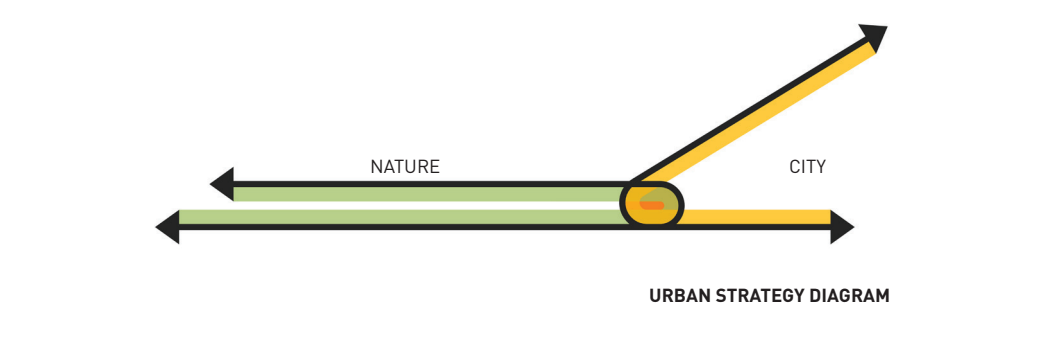
## **Jury’s Comments**

The proposed sunken forecourt and performance stage that faces the iconic facade of the TPRS building was innovatively designed and had an impressive civic quality. The sense of enclosure creates a dramatic entry into the building and enhances the forecourt as a multi-functional community space for gatherings and performances. The main uses proposed within the site were community-centric and the concept of a ‘0km hub’ effectively conveyed the sense of history and importance of the building as the starting point of the former railway line. The use of transparent material such as glass at selected locations to link both sides of the train platforms over the railway tracks will make the space more usable, but still enable the public to appreciate the remaining artefacts on site. Similarly, the extensive introduction of retention ponds for stormwater management along the Rail Corridor is a unique proposal that could be studied. The idea to re-naturalise the Rail Corridor and to use landscape design to recall the linearity of the former railway line between the station and the Rail Corridor was interesting.

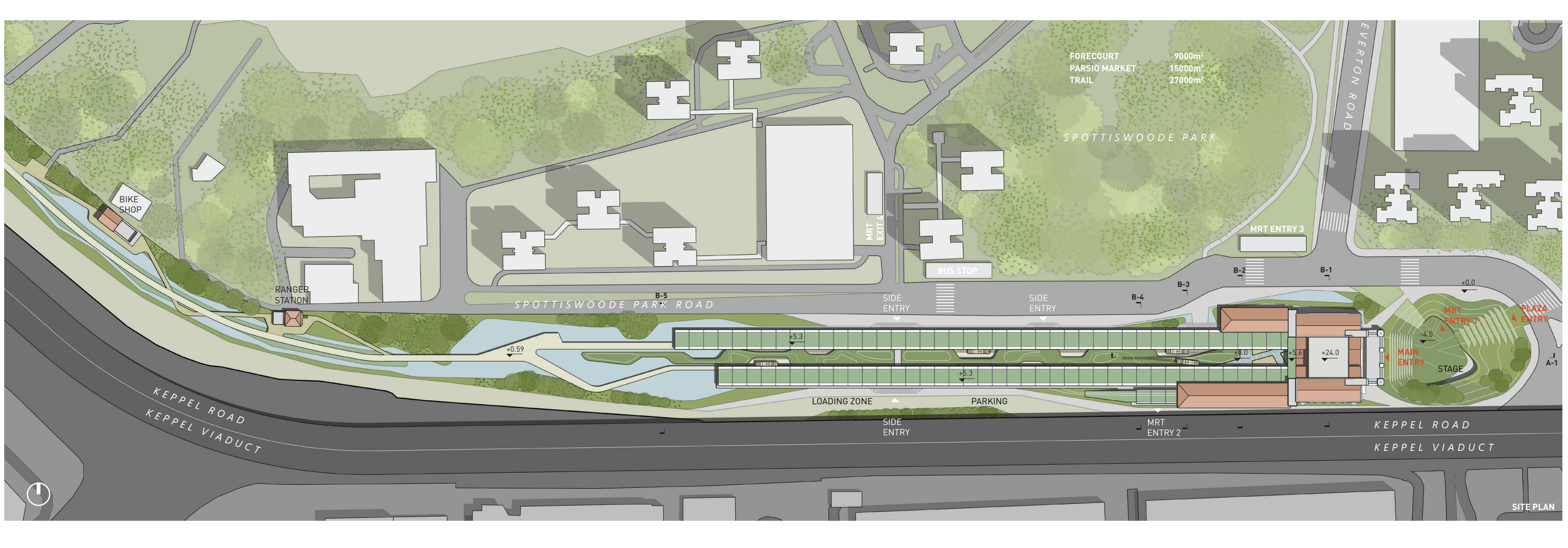
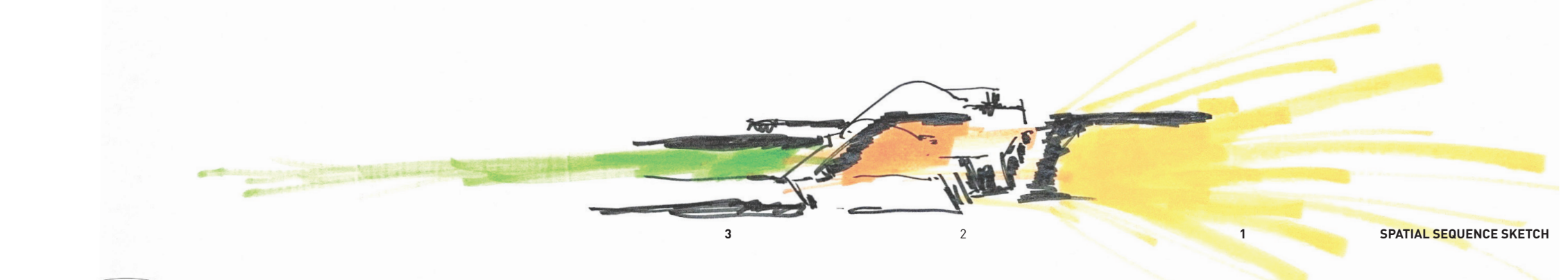


# 1 REDEFINE ZERO KM

WHERE CITY AND NATURE MEET

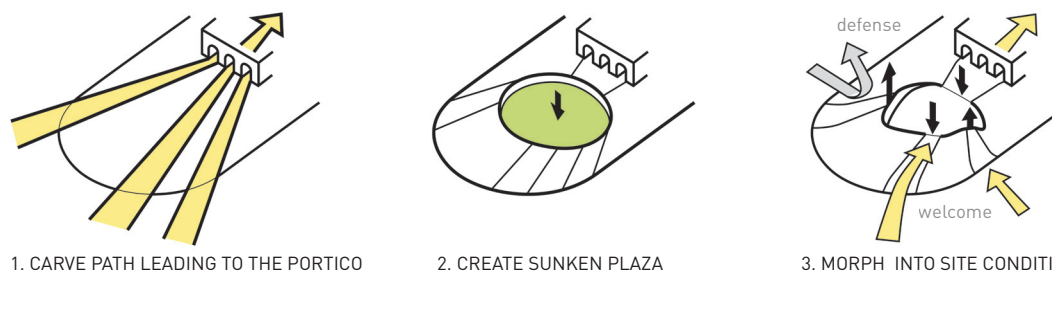


Tanjong Pagar Station functions as a cross-section through Singapore's past, where colonial history, modern infrastructure, and urban wilderness co-exist. "Zero KM" represents a starting point, where spatial identities emerge and converge. We are proposing an urban hub which connects the historical city center of Singapore with its urban rail corridor. The design consists of four zones: the Civic Forecourt, the Urban Living Room, the Garden Market, and the Resilient Rail Trail. The zones influence and reinforce each other, creating a holistic design focusing on togetherness and wellness.

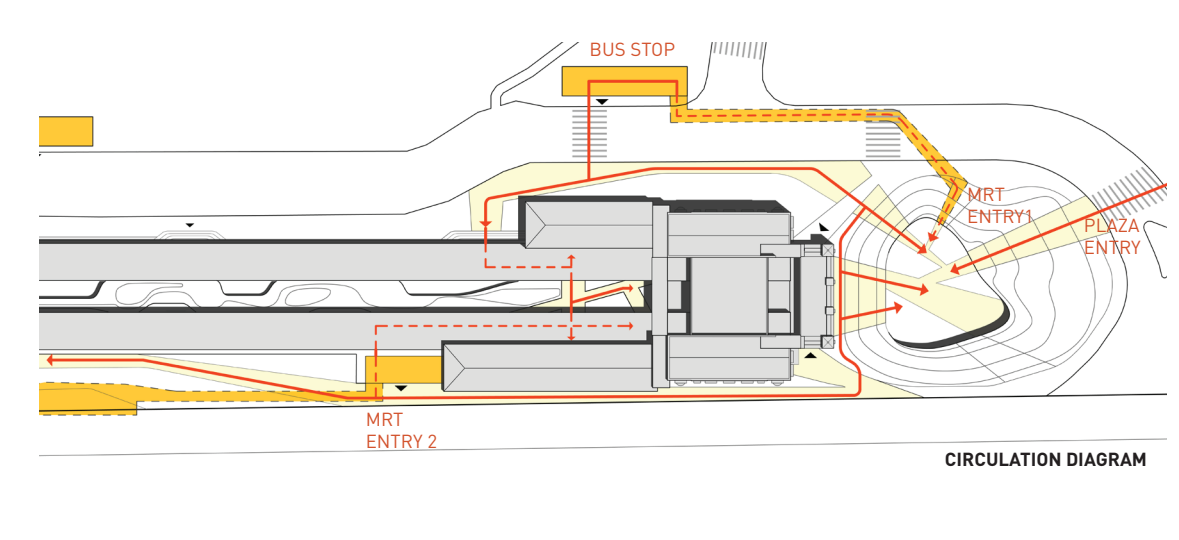


# 2 CIVIC FORECOURT

COMING TOGETHER



The sunken plaza serves as a gateway from historic downtown to link to the Singapore River Walk. To honor the historic significance of the site, the parking lot is relocated to make room for a dynamic forecourt of entry. The design is centered around a sunken courtyard that provides a major gathering space under the historic facade, with an entry for the newly proposed underground subway. The plaza also features a raised stage for outdoor concerts that can be adapted to suit various performance types. Meanwhile, resilient features are incorporated to protect Singapore's sensitive land, such as rainwater harvesting. The design transforms the front entry into a vibrant epicenter for public use.



# 3 URBAN LIVING ROOM

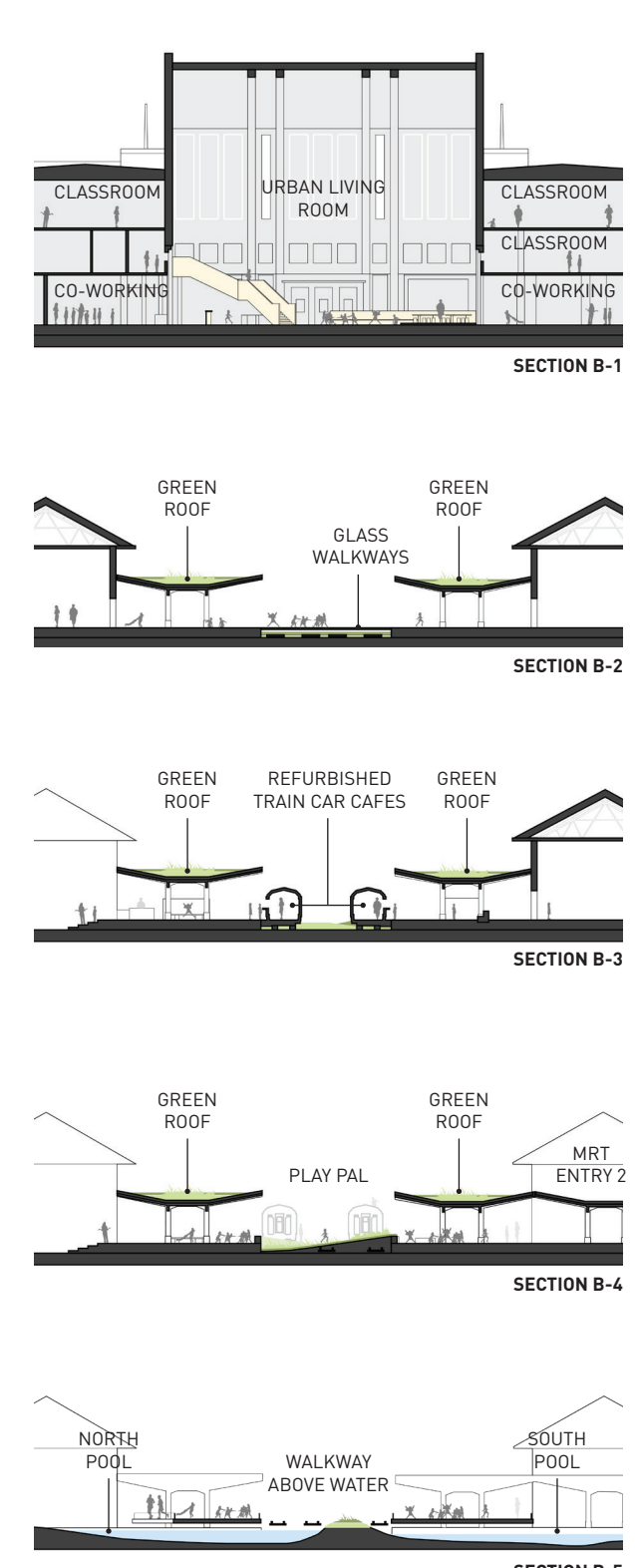
MONUMENT IN HUMAN SCALE



The lobby pays tribute to those who endured colonial rule and contributed to Singapore's growth with its rich history as a transportation hub. We imagine the historical building as a future community palace for arts and wellness, with a subtle design approach on the ground floor to retain its historical integrity. With warm-toned paving, assorted seating options, study spaces, and a cafe and bookstore installed in the reprogrammed old kiosks, the lobby provides members of the community a place to relax and gather before arriving at their classrooms and studios upstairs. This shift in scale spatially decolonizes a grandiose colonial interior into an intimate community space, emphasizing citizenship over power.

# 4 GARDEN MARKET

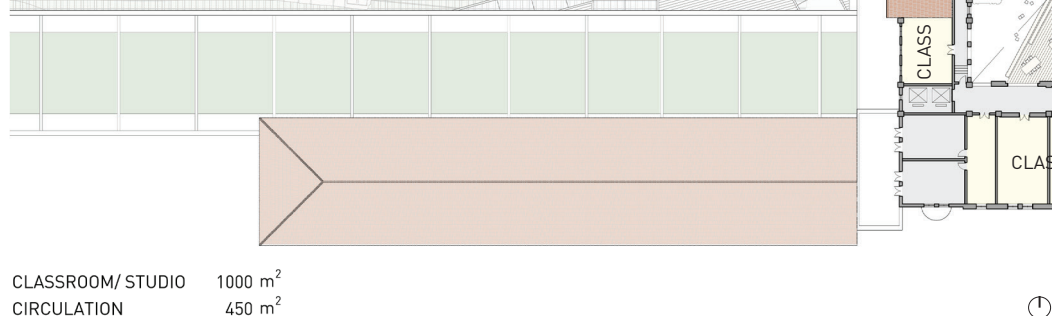
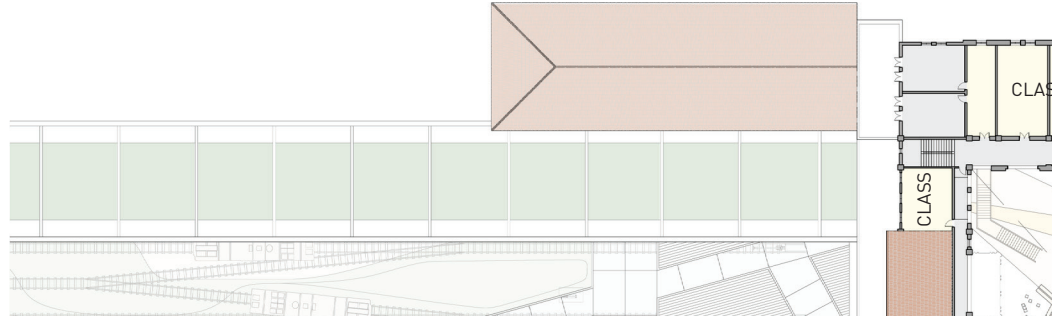
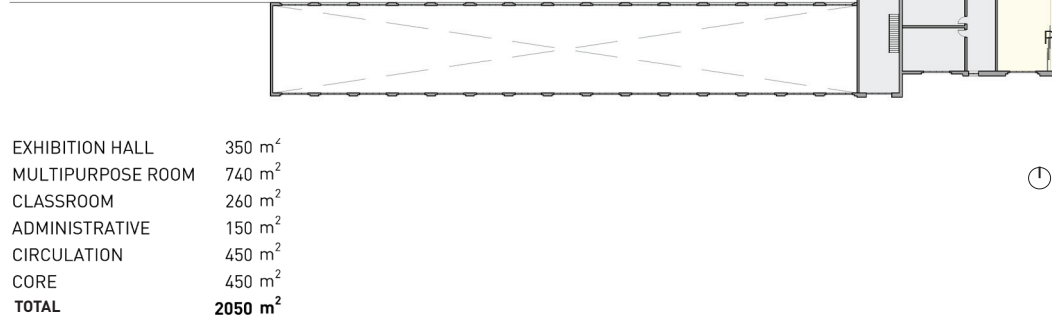
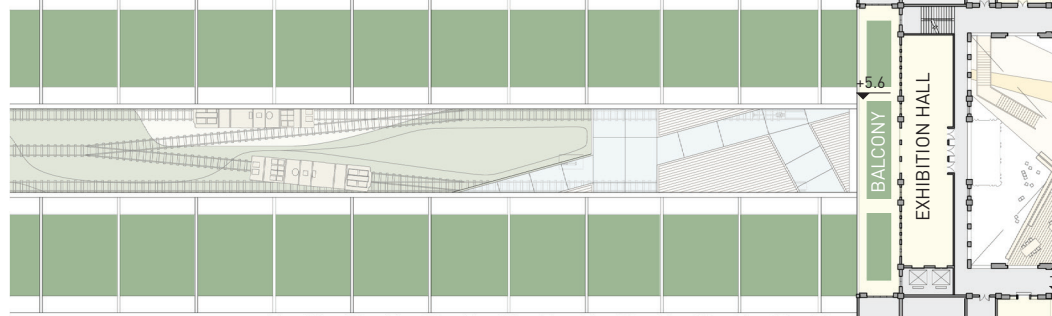
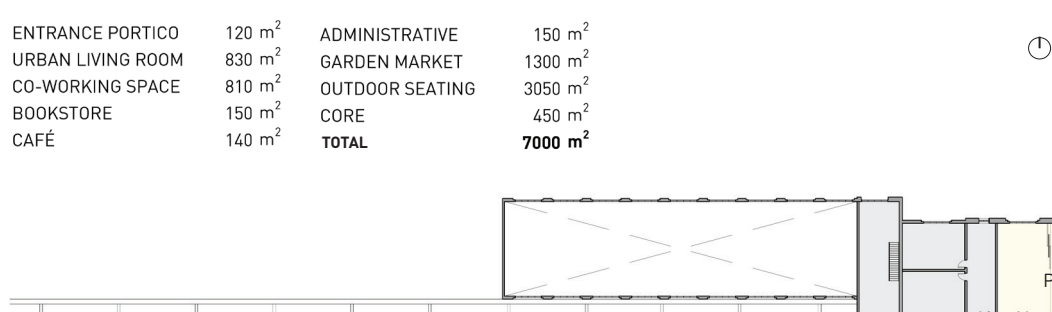
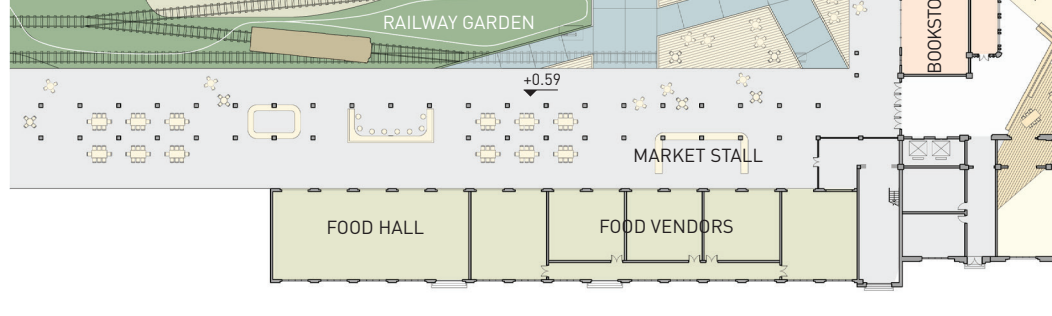
MEMORY COLLEGE OF THE PLACE



A glass walkway connects the food hall and garden market, making it possible to see old rail tracks below. Food vendors and market stalls occupy the two wing buildings, with open seating under platform canopies for dining. In the center will be a rolling green landscape set on top of the old tracks, creating a vibrant play space for children. Refurbished train cars function as climate-controlled cafes, providing glimpses into luxury travel of the past. The end of the platforms forms the beginning of the urban wilderness trailhead. Prioritizing resilience, passive climate control measures will be implemented, utilizing on-site harvested water for misted breezes and green roof plantings to mitigate urban heat island effects. Shallow soil under platform canopies will support vine growth, while water features will help alleviate summer heat, contributing to a sustainable approach that minimizes reliance on Singapore's limited water resources.

# 3 URBAN LIVING ROOM

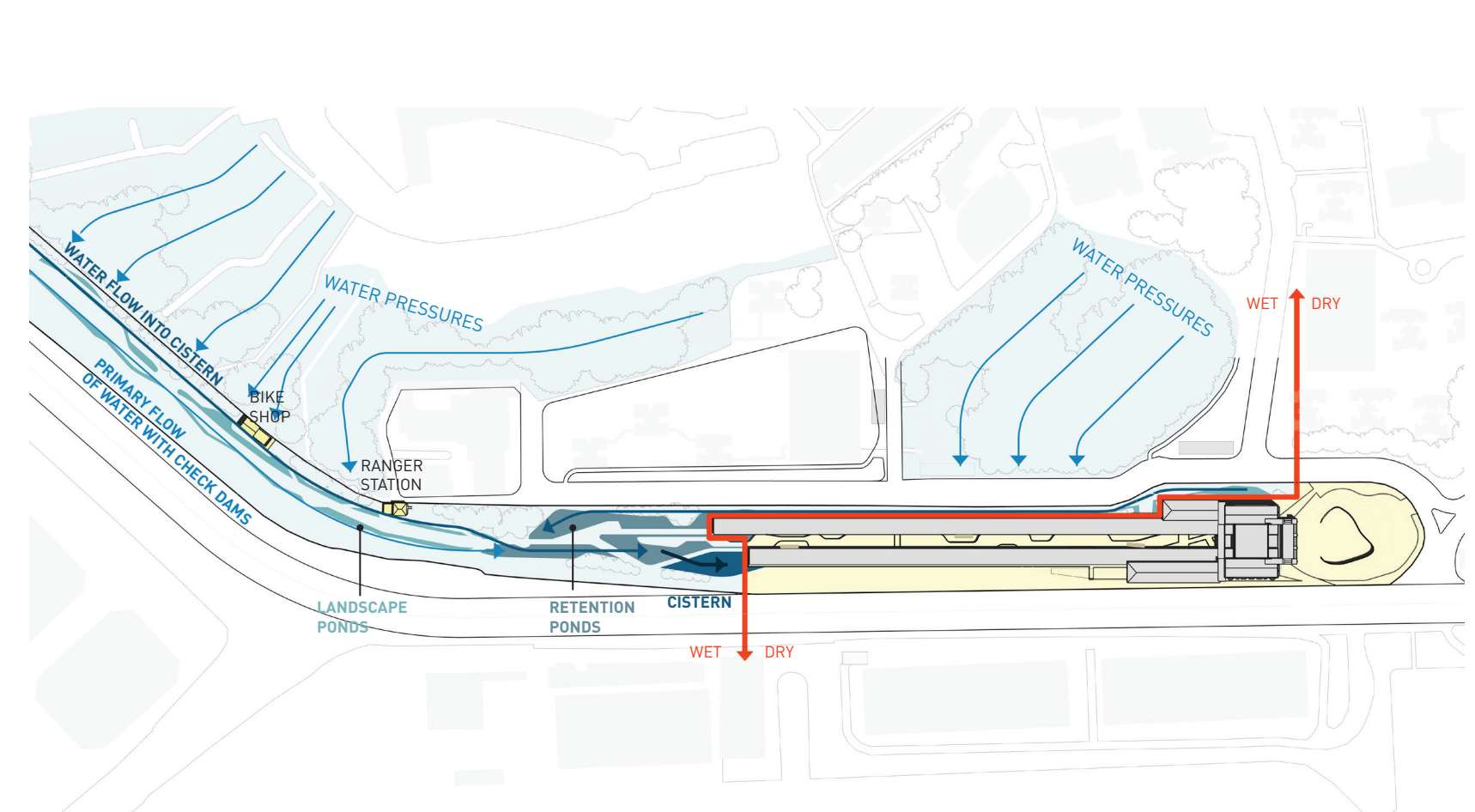
MONUMENT IN HUMAN SCALE



# 5 RESILIENT RAIL TRAIL

FROM RAIL-ITY TO SUSTAINABILITY

The resilient landscape segment blends historical preservation with community engagement and stormwater mgmnt. Central to its function is a sophisticated stormwater management system, featuring double channels and check dams to mitigate flood risks, crucial for safeguarding the historic building in Singapore's flood-prone area. Stormwater is directed to a cistern for on-site reuse, while check dams in the secondary stream mitigate storm surges during heavy rains. Rail corridor paths mirror the original tracks, complemented by classic rail design motifs in the surrounding landforms. This blend of history and contemporary usability extends to a secondary trail system, native plantings, and repurposed signal towers as ranger stations, ensuring a dynamic and engaging hiking experience while preserving the site's heritage.



# 0KM HUB

THE COMMUNITY CENTRE THAT LEADS BEYOND

de6081