

# WHAT DOES THE COMMUNITY SAY ABOUT INNER RING?

## WHAT IS THE INNER RING CORRIDOR?

The Inner Ring Corridor is made up of historic trunk roads that encircle the city. Over time, many unique and charming neighbourhoods – such as Chinatown, Tiong Bahru, Bukit Ho Swee/Havelock, Newton, Novena and Jalan Besar – have evolved along the city fringe.

More than 500 people have been engaged in 2024 and 2025, sharing their wishes and aspirations in shaping the Inner Ring's future together.

## ECLECTIC

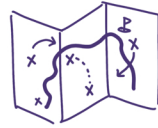
### MULTI-GENERATIONAL & MULTI-CULTURAL MOSIAC

From distinctive historical landmarks and niche trades to pioneering residential models, the Inner Ring Corridor is host to many neighbourhoods that have made a mark on Singapore's history at different times. The community deeply appreciates the unique blend of heritage and diverse communities.

“ This is the evolving charm here... it is sitting still, as in the historical landmarks, but the purpose and function has evolved. ”

AN ECLECTIC MIX OF USES ACROSS TIME

### A TREASURE TROVE OF HIDDEN GEMS



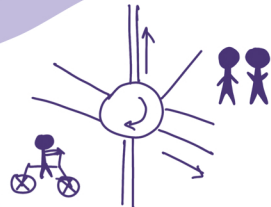
Business owners, residents, and visitors alike have described the Inner Ring as an eclectic, mixed bag of retail, dining, and cultural destinations. There is a shared sentiment to activate the routes to allow more people to discover them.

“ You should be able spend the whole day here... where there's something for everyone. Day and night crowds are different. ”

discover lesser known but charming places.

### A NETWORK THAT ENABLES EXPLORATION

Beyond just travelling along the main road on the Ring, there is a desire for smoother connections to smaller paths and routes to reach various destinations within neighbourhoods.



- More cycling paths
- Wider sidewalks
- Road repurposing
- Car-lite!

“ This Ring connects all the important parts, but how do you go inside? Especially the small side streets and corners? ”

## CONNECTEDNESS

## SOULFUL

### IN TRUE COMMUNITY SPIRIT

The community expressed a strong preference for access to flexible, open spaces and opportunities to actively co-create and shape their neighbourhoods, valuing areas that encourage organic interactions.

Regenerate spaces to create memories for the community.



“ There could be a space for communities to come together and man their own space, do their own activities, to create some authentic life. ”



### GREEN POCKETS THAT DRAW LIFE IN

The Inner Ring lies along the bustling city fringe, and the community believes that introducing more pockets of greenery will provide respite and make exploring the corridor more enjoyable.



Rustic communal green spaces.

“ Introduce more greenery... that will bring life back to the streets rather than just shopping in the malls. ”

### A CONTINUOUS CITY-FRINGE LOOP

The community sees the potential of the Inner Ring as a city loop and a key connector between walking and cycling routes. They acknowledge that parts of the corridor today are car-centric, which poses a challenge to achieving seamless pedestrian and cycling connectivity.

CYCLE FRIENDLY TO EAT

a safer & walkable city

“ The corridor is surrounded by nice things, but the experience of getting around without a car is very dangerous. ”