



Love local

Your guide to exploring our own backyard

Discover hidden gems in Singapore
Eat your way around the island
Get to know more local stories





There is always something **magical** and **extraordinary** about **rediscovering our own backyard**



Love local is our labour of love to inspire you to stroll through our lush rainforests, beautiful streetscapes and hidden alleyways across Singapore.

Stop for delicious cuisines, hear the birds chirping, admire quirky public art or cycle along scenic trails.

In this guide, we dig deeper to uncover more hidden gems and speak to long-time owners and champions who reveal more personal urban stories, for you to fall in love with our many diverse neighbourhoods all over again. Use our guide for renewed adventures around our island.

Here's to loving our own backyard!

Contents

- 4** Greater Rustic Coast
- 12** Rail Corridor
- 22** Telok Blangah and the southern ridges
- 30** Kallang River
- 38** East Coast & Katong
- 46** Bras Basah, Bugis
- 54** Tanjong Pagar and nearby neighbourhoods
- 62** Litte India
- 70** Kampong Gelam
- 78** Explore public art around the island
- 84** Try out photographer Joseph Nair's bike routes
- 88** See the city on a bike
- 90** Find gems in the nine neighbourhoods



TimeOut
SINGAPORE

Time Out Media Singapore Pte Ltd
MCI (P) 035/09/2019
39A Amoy Street, Singapore 069865
www.timeout.com/singapore

Managing Director, APAC
Tim Webb

Editorial Editor
Delfina Utomo

Feature Writer
Cheryl Sekkappan

Writers
Dewi Nurjuwita
Fabian Loo
Nicole-Marie Ng

Art Brand and Creative Director
Phoebe Cheng

Designer
Kashmira Kasumi

Photographers
Chee Boon Pin
Ahmad Iskandar
Daniel Iskandar

Commercial Finance Manager
Sally Lam

Executive CEO, Time Out Group
Chris Onlund

Founder
Tony Elliott

Urban Redevelopment Authority (URA) Editorial and art direction
Serene Ting
Agnes Won

Love local is published on behalf of Urban Redevelopment Authority (URA) by Time Out International Limited. © 2022 Time Out Group Limited

Printed by Times Printing

All articles and photographs published herein are created by the authors and photographers at their own discretion and do not necessarily represent the views of URA. Some of the photographs in this guide are taken prior to 2020. Some features in this guide are based on past interviews by URA.

All material is strictly copyrighted and all rights reserved. No part of this publication may be reproduced in whole or in part without prior written permission of the copyright holder. All facts are correct at the time of publication.



Greater Rustic Coast

From Lim Chu Kang to Changi, this 50 km continuous stretch along the northern coast is Singapore's rustic ode to the past, from farms to natural havens, historic landmarks and idyllic beaches.

Explore

There is something magical about being in the great outdoors. Re-explore the little backyard of farms, spot wildlife in their natural habitat or immerse yourself in the past.

1. Sungei Buloh Wetland Reserve

301 Neo Tiew Cres

Daily: 7am to 7pm, last entry is at 6.30pm

An expansive natural haven first discovered over 30 years ago, by a group of birdwatchers from the Malayan Nature Society, this area is now recognised as an important site for migratory birds. Catch a glimpse of these animals escaping the cold – some coming from as far away as Siberia.

2. Kranji Coastal Nature Park

60 Kranji Way

Daily: 7am to 7pm, last entry is at 6.30pm

Buffering the Sungei Buloh Wetland Reserve, the Kranji Coastal Nature Park is perfect for families to explore the variety of wetland habitats from

mangroves, mudflats to freshwater ponds. Spot animals like the White-bellied Sea Eagles to Monitor Lizards.

3. Kranji Marshes

11 Neo Tiew Ln 2

One of the largest freshwater marshlands in Singapore, it was formed as a result of the damming of the Kranji River in the early 1970s. The damming of the river flooded the surrounding low lying areas and created the freshwater marshland habitat. Restoration efforts from 2014 to 2016 was done sensitively in order to protect the rich array of flora and fauna found in the area. This includes over 170 species of birds, 54 species of butterflies and 33 species of dragonflies.

4. Hampstead Wetlands Park

1 Baker St

Daily: 7am to 7pm

This hidden green spot tucked within Seletar Aerospace Park has been a quiet favourite spot amongst bird watchers for years. The space, regarded as the birthplace of Singapore's air defence, is also enhanced with boardwalks and nature trails that connect to the nearby Seletar West Park Connector. Explore the conserved black and white bungalows or visit eateries at its lifestyle hub, "The Oval".

WHAT'S TO COME

Stretching over 15km, look forward to explore the trails that connect the sites in the Sungei Buloh Nature Park Network which includes Sungei Buloh Wetland Reserve, Kranji Marshes and the upcoming Mandai Mangrove and Mudflat Nature Park and Lim Chu Kang Nature Park.

Mandai Mangrove and Mudflat Nature Park

One of the few remaining mangrove habitats in Singapore, this future area will have a nature trail and bird hides to view migratory birds. It will also connect to the Round Island Route and Rail Corridor.

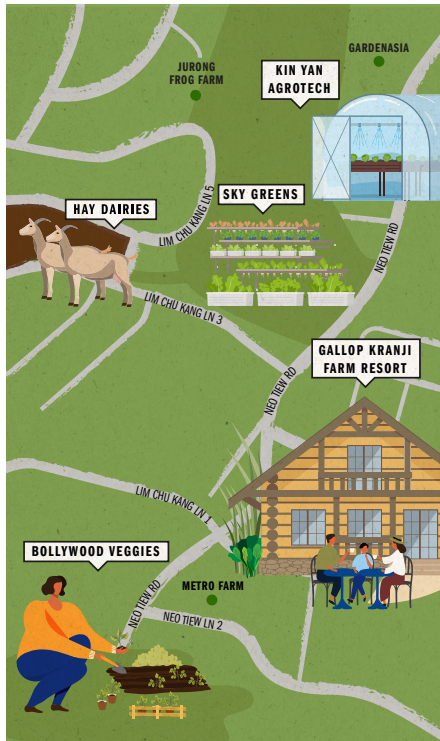
Lim Chu Kang Nature Park

Comprising a variety of habitats such as mangroves, woodlands, scrublands and grasslands, look forward to the outdoor nature-based recreation in this 18-ha Nature Park that is ecologically linked to Sungei Buloh Wetland Reserve. It will also encompass Cashin House, a heritage building that will be enhanced sensitively for both natural and built heritage.



5. Kranji & Lim Chu Kang

Spend the day or weekends at the many different farms in the area that are opened to the public.



Gallop Kranji Farm Resort

10 Neo Tiew Ln 2

A unique farm-stay experience. Wake up in the comforts of modern rooms, and explore the compound that include a herbal farm and fishing spot.

Bollywood Veggies

100 Neo Tiew Rd

Thu & Fri: 7am to 4pm, Sat & Sun: 7am to 5pm

One of the largest local producer of organic bananas and papayas, the lush compound with paddy fields and scenic ponds are open for all (including your furry friends) to explore. After, fuel up at its farm-to-table bistro serving up *nasi lemak* and more homely dishes.

Kin Yan Agrotech

220 Neo Tiew Cres

Daily: 9am to 5pm

Singapore's largest commercial organic wheatgrass and mushroom farm is open to the public. Sign up for the farm tour and learn how to juice fresh wheatgrass, peel and cook aloe vera, and even get a fresh taste of raw cactus and rosella drink.

Hay Dairies

3 Lim Chu Kang Ln 4

Wed - Mon: 9am to 4pm

The only goat farm in Singapore, Hay Dairies has more than 800 goats. It has been producing fresh milk for locals for over 30 years. Join a guided tour on weekdays, or choose to roam the grounds by yourself. Catch sights of goat-milking sessions, and even feed the goats. You can also buy their freshly squeezed goat's milk (available in original and chocolate flavours) and get some special handmade goat's soap as well.

Sky Greens

200 Lim Chu Kang Ln 3

Embark on a journey to see how agriculture has changed over time, and learn about the future of innovative farming at the world's first low carbon, hydraulic-driven vertical farm. Sky Greens also conducts tours around its innovative compound, where you can learn more about how fresh vegetables can be grown in an urban setting, with minimal land and energy resources.



Leon Hay, owner, Hay Dairies

on why farms are important and his favourite must-sees



Credit: Hay Dairies

together in a closed system – such as Metro Farm and Orchidville. It is interesting to see how traditional soil-based farming has evolved to incorporate technology at those farms. And that is not forgetting our horticulture neighbours with very beautiful landscapes. Some of my favourite landmarks include Bollywood Veggies because of its sprawling organic landscape; the multi-concept Gardenasia, and Singapore's very first Jurong Frog Farm.

What role can our farms play in helping us appreciate the importance of food production?

More Singaporeans are becoming interested in how we can increase our local food production. With farming in areas such as Kranji and Lim Chu Kang, this little backyard allows people to learn more about where food really comes from, how we grow them, how we cultivate them. It also allows people to understand the challenges that our farmers must go through to put food on the table.

Leon Hay is a second-generation farm owner of Hay Dairies, which continues to be the only goat farm in Singapore that serves up a fun experience for kids and many interesting products.

How did Hay Dairies first come about?

When Hay Dairies first started in 1988, over 30 years ago, there were no such specialised farms in Singapore. We started out rearing pigs in the 1970s, until the government phased out pig farming. Our family turned to goats as an alternative and decided to take the plunge to import the first batch of animals. We are still the only dairy goat farm today, with over 800 goats, and we produce fresh goat's milk for the local market and conduct tours as well.

Who are some interesting neighbours that people should visit?

There are a few aquaponics farms – this refers to a combination of aquaculture and hydroponics, where fish and plants are grown



The Greater Rustic Coast also tells the story of Singapore’s history – from its ties with the British navy to sites of the Japanese Occupation.

6. Kranji War Memorial

9 Woodlands Rd

Weekdays: 9am to 4pm

Dominated by the huge, wing-like Singapore Memorial, the site includes 4,000 gravestones and several monuments for servicemen killed in the early days of the Japanese Occupation, including one for those lying in ‘unmaintainable graves’ elsewhere in Southeast Asia. The inscriptions tell countless tales of death and sacrifice. Also, the tombs of the first two presidents of Singapore can be found here.



7. Sembawang Park and Shipyard

Sembawang Rd

Sembawang was once home to the British naval base. Today, remnants of its maritime history remain at Sembawang Park. Look out for a playground with a battleship-like structure – a nod to the area’s past. Then stroll down restored pathways used during the British Occupation, and seek out the historic Beaulieu House, a neoclassical building that was once home to senior engineering staff involved in the building of the naval base. It now functions as a scenic seaside restaurant. Follow the coastline to reach Sembawang Shipyard. When the once-bustling port-of-call ceases operations, there is potential to redevelop it into a new mixed-use lifestyle precinct that pays homage to the maritime history of the area.



8. Punggol Point Park

Punggol Point Rd

The idyllic beach was one of the three main sites in Singapore where the Sook Ching Massacre took place during World War II. The beach is listed by the National Heritage Board as a historical site and there is an on-site heritage marker detailing the tragic event. Today, with the opening of Punggol Point Park, the area is a popular waterfront destination where you can soak in the laid back coastal atmosphere and take in views of Pulau Ubin and the Johor Straits on a ship-inspired elevated viewing deck.



9. Changi Point

Changi Village Rd

A laid back escape with holiday bungalows, sea-facing chalets and sports clubs, this area continues to charm with its lush greenery, rustic vibe and wonderful sea views. Used by the British as a military base around the late-1920s, you can find many beautiful bungalows and buildings throughout the area. Embark on a scenic hike along Changi Point Coastal Walk, which eventually branches out to Netheravon Road where you can grab café grub from The Coastal Settlement.

WHAT'S TO COME

Look out for enhancements and potential new attractions in Changi Point with plans and ideas implemented progressively to bring out the rich biodiversity and heritage of the area.

Seletar Aerospace Park

Spend one of your weekends at the charming and tranquil Seletar Aerospace Park.

In its heyday, this area, which was known as Seletar Airbase, was home to one of the most important Royal Air Force (RAF) stations in the Far East that opened in 1930. The area was rejuvenated in 2006 into a thriving aviation industrial hub, retaining much of its rich aviation history, including its airport and 32 black and white bungalows.

“It was like a ‘Little England’,” shares George Pasqual, a long-time resident, who moved into the nearby Seletar Hills Estate in the 1960s.



Al Taylor, a young British conscript then, who landed in Singapore in 1955 and worked as an engine mechanic for the 81 Squadron, remembers Seletar Airbase fondly. “When I first arrived here, the horizon was the height of a palm tree at Seletar.”

Look out for Block 450 at Seletar East Camp, where servicemen and women served in the 160 Squadron, Singapore’s first and longest-serving air defence unit. There is a community heritage storyboard there, sharing stories about this block that connects many generations.



Credit: 60 Squadron

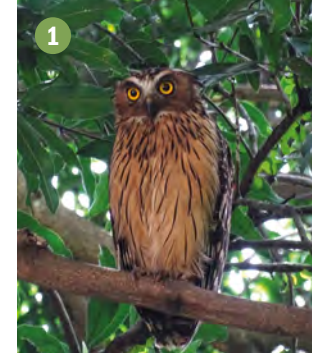
Hampstead Wetlands Park

Nestled within the aerospace park is a green sanctuary. Developed by JTC Corporation and the National Parks Board, this beautiful nature spot is home to many plants, birds and other wildlife.

Featuring scenic boardwalks, viewing decks and a nature trail, immerse yourself in this hidden gem. It is also a wonderful place for bird watching and to hone your photography skills to capture the many colourful birds in this area.

Here are some birds spotted:

1. Buffy fish owl
2. Banded woodpecker
3. Bluetail bee-eater
4. White throated kingfisher



Credit: JTC, NParks, Sun Sea Lang



Credit: NParks



Rail Corridor

This 24 km former railway line from the north to the south of Singapore is an extraordinary community space. With the return of this former KTM-owned railway track land to Singapore in 2011, many communities have been engaged to actively shape the space. A kaleidoscope of landscapes and historic gems, it is a treasure trail that remains in its rustic state for everyone to enjoy.

Explore

On top of the tranquil natural spaces and historic gems along the Rail Corridor, there are also delightful nature trails, parks, eateries and neighbourhoods all around.

Before your exploration of this stretch, it is best to check for any diversions or closed routes at: nparks.gov.sg/railcorridor/enhancement-plans.

1. Admiralty Park

6A Admiralty Park

Located close to the Rail Corridor in the north is Admiralty Park. A key attraction is its 26 slides. These are designed around the park's natural steep and hilly terrain. What is also special is its 20-ha nature area, with a diverse mix of secondary forests, riverine, mangroves and grassland habitats.



2. Mandai Mangrove and Mudflat

75 Kranji Rd

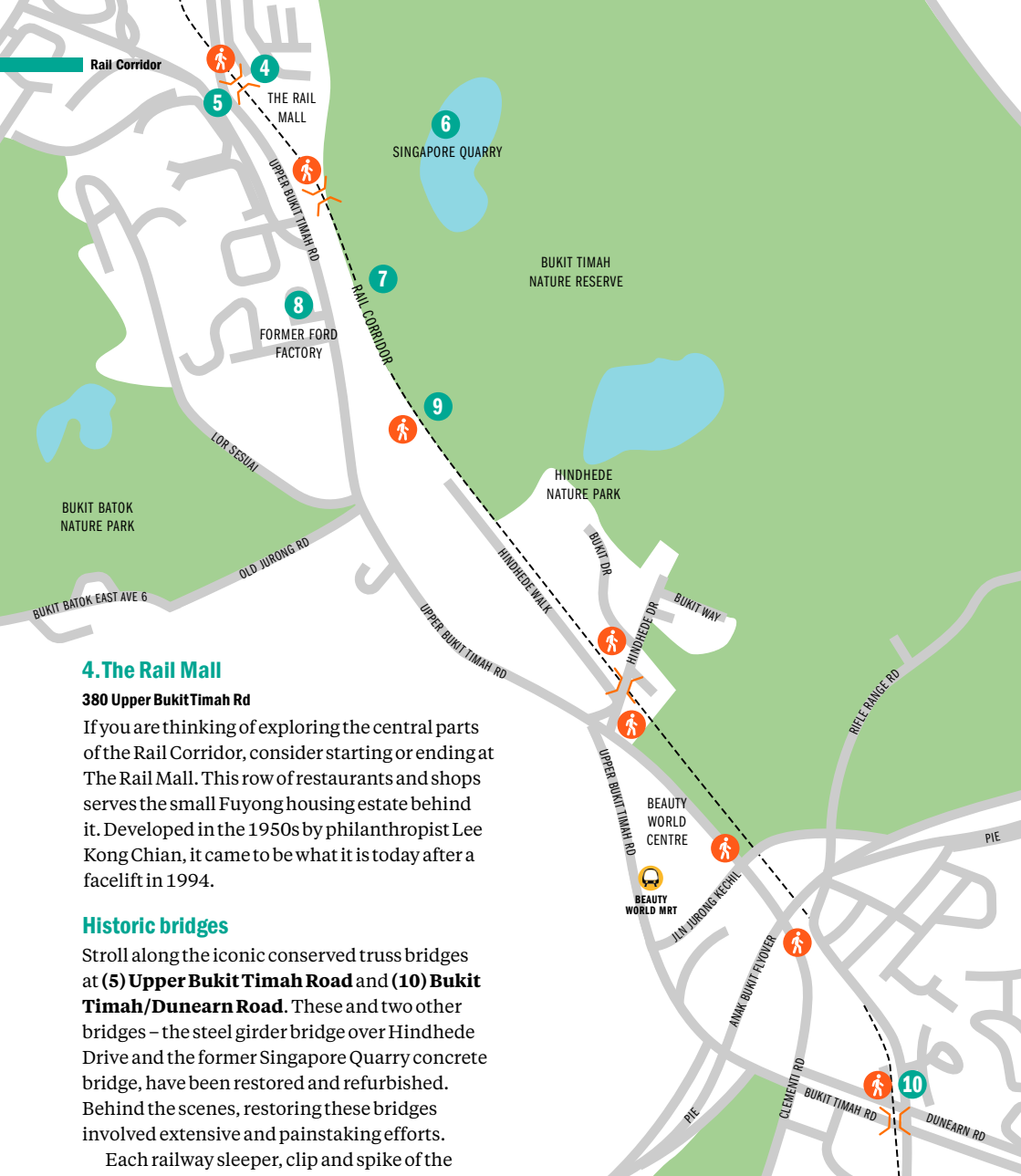
Continue your experience of nature at the Mandai Mangrove and Mudflat. Part of the Greater Rustic Coast (pg 05 in this guide), it is one of the few remaining mangrove habitats in Singapore with an extensive mudflat exposed at low tide. Soon, you will be able to stroll along a nature trail at this new park and use the bird hides to view migratory birds feeding on the mudflat.

3. Central Catchment Park Connector

451 Mandai Rd

Not far from the Rail Corridor, this lesser-known path is often used by cyclists. It winds around dense rainforests and connects to the Chestnut Nature Park. Be prepared for rougher gravel paths and keep to the left while watching out for cyclists.





4. The Rail Mall

380 Upper Bukit Timah Rd

If you are thinking of exploring the central parts of the Rail Corridor, consider starting or ending at The Rail Mall. This row of restaurants and shops serves the small Fuyong housing estate behind it. Developed in the 1950s by philanthropist Lee Kong Chian, it came to be what it is today after a facelift in 1994.

Historic bridges

Stroll along the iconic conserved truss bridges at **(5) Upper Bukit Timah Road** and **(10) Bukit Timah/Dunearn Road**. These and two other bridges – the steel girder bridge over Hindhede Drive and the former Singapore Quarry concrete bridge, have been restored and refurbished. Behind the scenes, restoring these bridges involved extensive and painstaking efforts.

Each railway sleeper, clip and spike of the train tracks had to be carefully removed and placed back in their exact positions. The types of railings introduced to these bridges were also carefully considered and designed in consultation with the community. The final design balances safety and their compatibility with the natural surroundings.

6. Singapore Quarry

Just a 15-min walk from The Rail Mall is this beautiful hidden spot. Formerly used to mine granite, the disused quarry is now a pond set in a tranquil oasis of lush greenery and towering cliffs.

7. Natural stream

This natural stream running along the trail has its source at Bukit Timah Nature Reserve. Look out for small animals that make this freshwater stream home, such as the black-eyed litter frog and the lowland freshwater crab.

8. Former Ford Factory

351 Upper Bukit Timah Rd
Tue – Sun: 9am to 5.30pm

Venture off the Rail Corridor for some history at this national monument. The museum was the first assembly plant in Southeast Asia and where British Forces surrendered Singapore to the Japanese army in 1942. Multimedia exhibits show how life was during the Japanese Occupation. Outside, a railway crossing light reflects the factory's link to the Bukit Timah railway line.

9. Native forest

Slow down to pay closer attention to the belt of native forest in this area. Over 1,500 native trees and shrubs have been added.

More access and enhanced paths

From The Rail Mall, you can easily access the Rail Corridor via landscaped stairs nearby. You can also access the Rail Corridor through seven other points. As you walk along the corridor, you will notice that stretches of the trail next to green areas are kept rustic for you to immerse yourself in nature. Sections closer to urban areas have an earth-coloured porous material, which is comfortable for people of all ages and abilities to walk on.



Ramana Venkta, Group Director, North-South Corridor, Land Transport Authority

on growing up at the Bukit Timah Station Quarters



Credit: Ramana Venkta

The (11) **Bukit Timah Railway Station** and the opposite Staff Quarters are conserved landmarks that supported railway lines in the past. These will house a heritage gallery and café in the future. Ramana's father was the Station Master from 1979 to 1983. During this time, the family lived at the Staff Quarters. Ramana recalls his growing years here.

What was it like living here?

We were one of the only two families living here. It felt like we were in a world of our own, surrounded by nature. We had two rooms in the house. In the middle, the courtyard opened to blue skies. We also reared chickens and enjoyed fresh eggs all the time.

What was your father's work like?

My father worked from 7am to 10.30pm based on shifts throughout the day. In managing the trains, it was very manual. A lot depended on

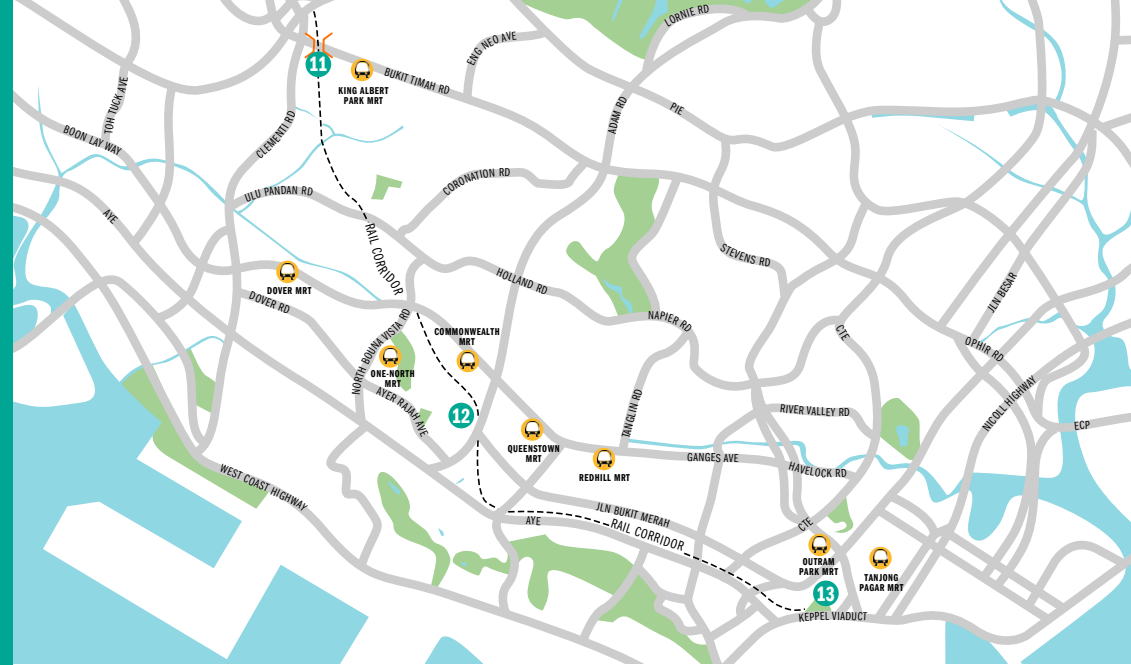
the key token that had to be passed at precise moments when the train passed. There was also a signal house where there were levers to operate. There were very few station masters in Singapore then. But their roles were critical in ensuring the smooth running of trains between Malaysia and Singapore.

How do you feel about the Station Quarters being conserved?

I am happy it has been conserved. It brings back fond memories. I go back to the area often to walk or cycle. Growing up here, I have come to love trains, and this continues to this day with my current profession in the transport sector.



Read the full interview with Ramana Venkta online



12. Wessex Estate

4 Woking Rd

Built in the 1940s, Wessex Estate is where British servicemen lived. Some of the black and white houses have been converted to art studios. Sights include the water tank and Colbar Café. Opened in 1953, the café serves Western and Asian dishes including sandwiches and sweet and sour pork.

13. Tanjong Pagar Railway Station

30 Keppel Rd

Where the Rail Corridor ends, the Art Deco-style station was built during the height of train travel. It will be reopened when the site is integrated with the future Cantonment MRT Station.



WHAT'S TO COME

Watch out for upcoming nature trails off the Rail Corridor. Explore the Ulu Pandan Park Connector via the Clementi Nature Trail and Jurong Lake Gardens via the Old Jurong Line Nature Trail, named after the historic railway track. It will cover old railway tunnels, tracks and bridges.





Bukit Timah Railway Station

Built in the early 1930s, the Bukit Timah Railway Station served as one of the seven railway stations along the Singapore-Kranji Railway. Together with the Alexandra and Tanglin Halt Stations, it was later used to service the suburban areas of Singapore, most notably for horses bound to and from the former Turf Club at Bukit Timah.

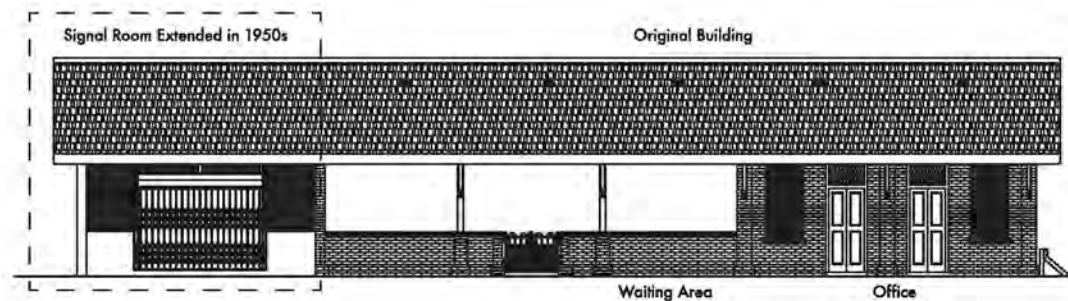
In its final years, the station operated mainly as a freight interchange before it was decommissioned in 2011.

This station building and the Staff Quarters will feature a heritage gallery and café in future. Landscaping for the area will also be enhanced with edible and decorative plant species commonly found in kampungs in the 1960s.

Three things to know about the station building and its rail lines:

Railway Station building

The station was originally a five-bay single-storey building constructed with fair-faced brickwork, timber columns, and a timber roof truss.



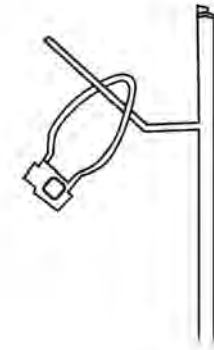
Two bays served as the Station Master’s office, and three bays served as the passengers’ waiting area.

When the station underwent a major upgrade in the 1950s, a reinforced concrete structure was added to house mechanical lever frames for signalling and track switching.

Tokens

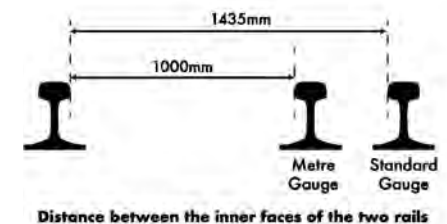
The token exchange was a common practice for a single-track line such as the Woodlands – Tanjong Pagar route. After passing through a section of the rail, the train driver will drop his token onto this token exchange pole, while immediately collecting a new token from the Station Master. Both actions are done without stopping the train.

The train can only pass through a section of the track when the driver holds a key token. This system ensures that only one train is inside each section at any given time.



Rail tracks

The Malayan Railway used the metre-gauge rail, which is a type of railway track that uses the narrow gauge (1,000 mm) historically used by European colonial powers. In contrast, the standard-gauge adopted in Singapore’s Mass Rapid Transit (MRT) system today measures 1,435 mm, which allows trains to travel at a faster speed.



Eat

Worked up an appetite after exploring the Rail Corridor? Head for some delicious food just around the corner.

Beauty World Centre

144 Upper Bukit Timah Rd

Explore the unique open-air hawker centre on the fourth floor with many food stalls to choose from. It used to be the Tai Tong Ah Sai Kai amusement park during the Japanese Occupation, with gambling activities, coffee shops, retail stores and Chinese medicine shops. It transformed into a market of 160 stalls during the British rule before being redeveloped as Beauty World Centre in 1984.

Cheong Chin Nam Rd

Named after the members of the prominent Cheong family that owned land and developed residential properties in Bukit Timah, this stretch offers plenty of food choices. For something comforting, try the Teochew porridge at Joo Seng Teochew Porridge and Rice. For hearty and satisfying Indian Muslim food, head to Al-Azhar Restaurant. If you've got the appetite, go for a barbecue at the many Korean eateries available.



Bukit Timah Food Centre

51 Upper Bukit Timah Rd

This long-standing market and food centre is popular with locals in the neighbourhood. Try out heritage hawker stalls like He Zhong Carrot Cake and Terry Laksa. You also won't be let down by *Sin Chew Satay Bee Hoon* and *Nyonya Chendol*.

Karu's Indian Banana Leaf

808/810 Upper Bukit Timah Rd

Tue - Sun: 10.30am to 10pm

This institution has been around since 1993 and serves arguably the best Indian fish head curry in Singapore. Besides that, check out its extensive menu of mains, tandooris, vegetarian delights and drinks.



Telok Blangah and the southern ridges

Known for its lush greens, hilly terrains and expansive coastline, Telok Blangah and the southern ridges area has a rich history and is a wonderland filled with wartime relics and unusual treasures. The area is evolving with new homes and lifestyle attractions along its 30 km Greater Southern Waterfront in future.

Explore

Check out local heritage group, My Community's adventurous walks venturing graveyards, mosques and early housing estates. For more information, go to mycommunity.org.sg.

1. Keppel Hill Reservoir

Keppel Hill

Speculated to have started out as a private pond for rainwater collection, this water body appeared on maps as early as 1905, under the jurisdiction of the Tanjong Pagar Dock Company. Today, remnants of a diving board can be found, framed by creeper plants.

2. Danish Seamen's Church

10 Pender Rd

Once belonging to Straits Chinese businessman, Tan Boo Liat, (great-grandson of Chinese pioneer Tan Tock Seng) the former Golden Bell Mansion is an iconic sight with its red-and-white stripes. While it follows late Victorian era aesthetics, the building is also punctuated with Buddhist influences. The building was gazetted for conservation in 2005.

Kwek Li Yong, Co-Founder, My Community

on Telok Blangah and sharing community stories

Local heritage group, My Community, has been leading walking tours that share unique personal stories and rich histories of places. Li Yong (in red T-Shirt below) talks about Telok Blangah and curating its tours.

Why did you choose to do a tour on Telok Blangah?

This is a lesser known area but has such a rich history. We took four years to create this tour, which is unique because it delves deeper into Singapore's long history and shares how the Malay community contributed to Singapore's economic growth. It also allows people to explore hidden historic gems, such as the Temarang Grave and Masjid Daem Temenggong.

What is your process like preparing for such tours?

A walking tour typically takes about one to two years to curate. Behind every tour, we do very intensive research. We'll develop and test out a few possible narratives before narrowing down to one. We'll also work closely with a variety of local hosts and volunteers to bring each tour alive.

How are your tours unique?

All our tours are led by different guides who live or have lived in the area, so you'll get to hear the community's personal memories of the area. It's what makes the heritage of the area more colourful.



What stands out in the island's south-west area is its natural terrain. Walk along iconic bridges and boardwalks, enjoy stunning views and come up close to wildlife.

3. Southern Ridges

Mount Faber Park, Telok Blangah Hill Park

This 10 km continuous stretch of green and open spaces linking Kent Ridge Park, Telok Blangah and Mount Faber, continues to marvel with its distinctive bridges. There is something magical about walking through forests. Explore some highlights:

- **Singing Forest** – listen closely to the chorus of bird songs; more than 200 native trees are planted to attract more bird varieties
- **Forest of Giants** – look out for giant native trees; 600 trees of 55 species are planted, many can grow as tall as 80 m, equivalent roughly to a 30-storey public housing flat

4. HortPark

33 Hyderabad Rd

This is a one-stop destination for all things gardening. Join guided tours or workshops here or simply enjoy its many themed gardens. For all-day dining set in a garden, relax at the Canopy café or French and Italian restaurant, Vineyard. Its signature Garden's Day Out is back and is also available online at nparks.gov.sg/GDO.



5. Berlayer Creek

Next to Labrador MRT Station

One of the few remaining mangroves in the south, this 15-minutes-walk is an easy walk for the whole family. Check the mudflats for crabs and mudskippers. You may even spot monitor lizards and otters too.

6. Labrador Nature Reserve

Labrador Villa Rd

Once a 19th-century battlement that guarded the people against sea invasion, the Labrador Nature Reserve or Labrador Park is today a peaceful oasis of trees, stunning boardwalks and restaurants. It is both a rich forest of biodiversity and happens to have played a part in Singapore's military history. Explore its secret tunnels built in 1886 and used extensively during World War II and other relics at the old British fort. For those wanting a different exercise experience, try its jogging track around the reserve, interspersed with fitness stations.

7. Haw Par Villa

262 Pasir Panjang Rd
Daily: 9am to 10pm

Haw Par Villa's beginnings date back to 1937, when Myanmar-born businessman Aw Boon Haw lovingly built it for his brother Aw Boon Par. Formerly known as Tiger Balm Garden, it is located on a hill in Pasir Panjang. While the cultural park began as an ode to Boon Haw's burning passion for Chinese culture, history and literature, it is also replete with international elements, an indication of the Aw family's global perspective.

The park's most iconic attraction – The 10 Courts of Hell – is now part of Hell's Museum, a first museum of its kind exploring perspectives of death and the afterlife from some of the world's major religions and philosophies. The museum reveals the rich heritage behind the 10 Courts of Hell, and explores how different communities around the world draw meaning from death, dying and what comes after. Visitor discretion and parental guidance are advised due to the sensitivity of the topics discussed. Check out other interesting attractions here:

- Stay at Singapore's first moveable container hotel located within the 8.5-ha park
- Join interactive trails and download a self-guide to explore the many sculptures and dioramas at the outdoor park; more info at hawparvilla.sg/tours-trails
- Escape the sun and relax at its colourful Culture Courtyard



WHAT'S TO COME



Pasir Panjang Power District

One of the key nodes anchoring the southern coastline is the Pasir Panjang Power District. It was once Singapore's former powerhouse, supplying essential power to fuel the push towards industrialisation in the early post-war years.

There are two decommissioned power station buildings, oil and gas tanks and other buildings such as a pump house and a staff apartment block. Future plans are afoot to transform it into a vibrant mixed-use district.

Take a glimpse into some of the ideas by architects and students in a 2019 competition.

Green erosion

By Charles Wee, Design Principal & Director, CJWA Architects

What drew you to the site?

I was impressed with the scale and robustness of the structures. Like a formation, the structures commanded a significant presence on the waterfront.

One of your ideas is an immersion of green spaces.

I was inspired by the hilly greens on both sides of the site and envisioned these greens blending in with the site to create a form of urban overgrowth, blurring the distinction between the nearby park connector and the site.

Taking this idea further, I imagine a 'green blanket' as a form of a garden superimposed on the whole site, filling the open spaces. It stretches and mediates the height disparity with the two hills through stepped platforms; it also extends out to the coast, creating a seamless integration of public spaces set in nature.

Re:interpret & Re:generate

By Swee Yew Yong (Formwerkz Architects), Dang Bao Bao (AWP Architects) and Stephan Shen Yi Zhe (ID Architects)

A key aspect of your proposal is to use the building as a creative hub.

There are similarities between the processes of generating electricity and creative works.

Both are products of an IPO (input-process-output) model, requiring "fuel" to initiate production, and both critical to the progress of Singapore. The old and new are reflected in the spatial organisation of our design.

The previously demolished chimneys, where fuel was burnt, are residential towers. The boiler house, where water was heated to produce steam, is a co-working studio space for artists. The turbine hall, where electricity was generated, is an exhibition hall for collaborative works. The flow of creative professionals is the fuel which is being constantly depleted and replenished, "empowering" the neighbourhood through exhibition events.

Myrios

By Chui Yee Chin and Yany Chan Ziqi, National University of Singapore

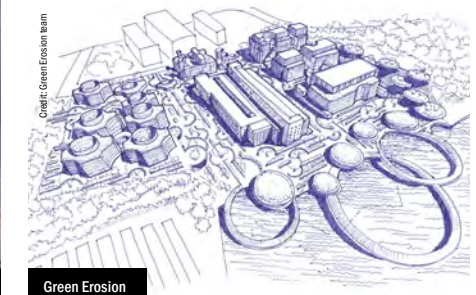
You have proposed many open, flexible and mixed use spaces.

One of our greatest challenges was figuring out how the power station's large volume could be filled with something as intimate as interactions between people without feeling intimidating. Our approach created

different zones to accommodate different levels of interaction and break down the monumentality of the area. Locating myriad smaller programmes in the large open area allowed people to appreciate the broader sense of festivities.

How do you envision the public experiencing the spaces?

Spaces defined by the colourful fabric on the ground floor and the open and giant steps provide for interactions at different scales - from intimate discussion bubbles to small group breakout and flexible learning spaces. We hope to bring people from various fields into one venue.





Kallang River

At 10 km, this is Singapore’s longest river that has witnessed the ever-changing nature of life. Filled with beautiful green spaces and pathways and a range of sporting opportunities, it is home to the island’s first airport and other historic landmarks. This treasured waterway will have more waterfront homes and connected cycling paths in future.

Explore

Whether you are looking for a respite along the river or for an active lifestyle, the Kallang River offers it all.

1. Bishan-AMK Park

1384 Ang Mo Kio Ave 1

More than just an idyllic park where the river runs through, the old concrete canal has been naturalised into a beautiful meandering river with lush banks of wildflowers.

2. Kallang Park Connector

Starts at Bishan Rd and runs along Kallang River before ending at Sims Ave

This 7 km pathway is the oldest park connector and is lined with the vibrant Trumpet tree (*Tabebuia rosea*), also known as Singapore’s “cherry blossom” trees. See the magic happen during the flowering season in January and February, or after a dry spell. It also links to other park connectors in Toa Payoh, Whampoa and even as far as Punggol Park.

3. Kolam Ayer ABC Waterfront

Kallang Bahru Ville

The floating deck at Kolam Ayer features the Archimedes Screw and the Water Wheel which are used for drawing water. Other ways to get close to the water include fishing and kayaking. You can join monthly kayak clinics conducted by Kolam Ayer Community Sports Club. Head to onepa.gov.sg for more information.

4. Kallang Riverside Park

Along Kallang Road and Crawford Street

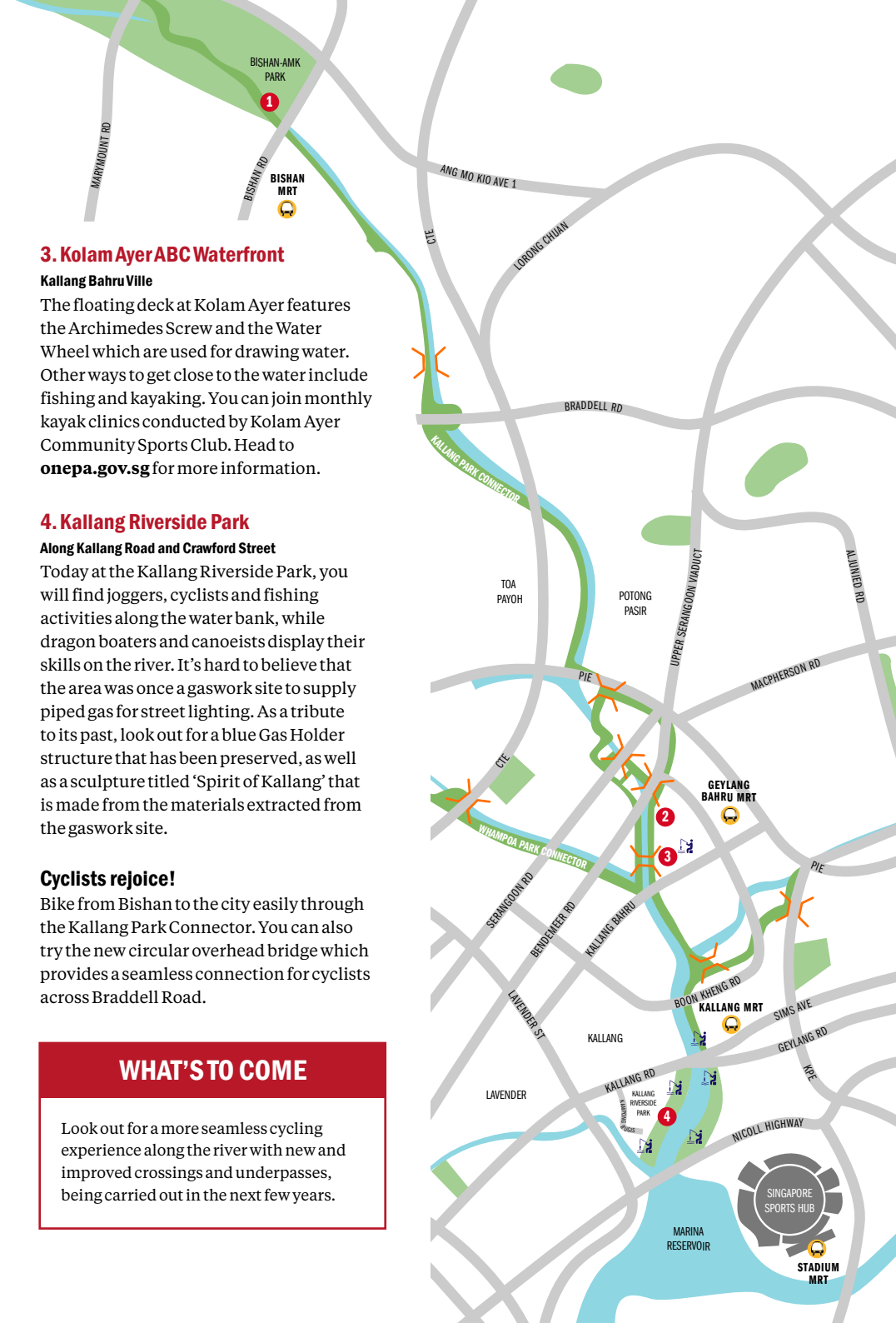
Today at the Kallang Riverside Park, you will find joggers, cyclists and fishing activities along the water bank, while dragon boaters and canoeists display their skills on the river. It’s hard to believe that the area was once a gaswork site to supply piped gas for street lighting. As a tribute to its past, look out for a blue Gas Holder structure that has been preserved, as well as a sculpture titled ‘Spirit of Kallang’ that is made from the materials extracted from the gaswork site.

Cyclists rejoice!

Bike from Bishan to the city easily through the Kallang Park Connector. You can also try the new circular overhead bridge which provides a seamless connection for cyclists across Braddell Road.

WHAT’S TO COME

Look out for a more seamless cycling experience along the river with new and improved crossings and underpasses, being carried out in the next few years.



The crown of Kallang River is the Singapore Sports Hub, which is a cluster of world-class sporting facilities, specialist centres, recreational areas and retail offerings that reflect the identity of Kallang.

Trivia: The National Stadium is the first in the world designed to host athletics, football, rugby, concerts and other shows all under one roof with its retractable seat system that can be configured for different events. The 55,000 red and white seats are also painted in an almost random pixel fashion to create the illusion of a packed house.

5. Shimano Cycling World

6 Stadium Walk
Weekdays: 10am to 8pm,
Weekends & Public Holidays: 10am to 9pm
 When in the area, make a stop at Shimano Cycling World, a bicycle showcase and experience centre. The centre conducts

introductory and maintenance workshops, spinning classes, personalised tours of the facility and special talks by bike enthusiasts.

6. Singapore Sports Museum

6 Stadium Walk
Weekdays: 10am to 8pm,
Weekends & Public Holidays: 10am to 9pm
 The museum traces Singapore's sporting history and contains a collection of memorabilia of Singapore's sporting endeavours, including medals, sports clothing and equipment of the local sports heroes, and the old National Stadium's gallery seats. There is also a section dedicated to the inaugural Youth Olympic Games which Singapore hosted in 2010.

7. Splash-N-Surf

1B Stadium Walk
Daily: 8am to 10pm
 If competitive water sports are not your thing, then have fun at this water play area. The water wonderland for the young and young-at-heart includes a wading pool, water play area, and more.



WHAT'S TO COME

For aspiring sportsmen and women and for those who like to remain active in sport, Kallang's future facilities will offer more diverse sporting opportunities for everyone.

Kallang Football Hub

The football hub will house the national training centre and ActiveSG Football Academy and include Singapore's first sheltered full-sized synthetic football pitch.

Youth Hub and Velodrome

The Youth Hub is envisioned to be a location for young sporting enthusiasts and for extreme and unique sports such as speed climbing and parkour. A velodrome is being studied to be built for community uses and as the national training centre for track cycling.

Kallang Tennis Centre

The new Tennis Centre will be the showpiece of a vibrant

sporting hub, with tennis at its heart, and facilities for all Singaporeans to enjoy. This includes first-class facilities to host future tennis events, and community-oriented features with common spaces. The centre will feature both indoor and outdoor courts and will integrate outdoor elements and green replacements into spaces such as the rooftops, event plaza and outdoor boulevard.

Kallang River is rich with landmarks that reflect its diverse past, from swamplands to what it is today. You can also find charming pieces of art in the area.

8. Merdeka Bridge

Span from Kallang River to Rochor River

Meaning “independence” in Malay, Merdeka Bridge also marked Singapore’s freedom when it opened in 1956 – a year after being given self-government from the British. When it was first built, spanning the mouth of Kallang and Rochor River, it was an important link between the city centre and East Coast – and continues to do so.

9. Merdeka Lion sculptures

Stadium Rd, National Stadium of Singapore

Admire a pair of majestic Merdeka Lion sculptures at the Stadium Roar with the National Stadium as a backdrop. They are replicas of the original Merdeka Lions once situated on either end of the Merdeka Bridge on the Nicoll Highway before they were removed in 1966 to allow for the widening of the bridge. The original sculptures are now located at the base of the SAFTI Military Institute in Jurong.

10. Cauldron for the 1973 Southeast Asian Peninsular Game

Arena Park in front of the OCBC Arena

Lighting up the cauldron is an important and symbolic part of major sporting events at its opening. Singapore sprinter Canagasabai Kunalan was chosen as the first person to light the Cauldron for the 1973 Southeast Asian Peninsular Games. In 2007, before the stadium was demolished, the honour was again given to Canagasabai to light the cauldron for the last time.

Today, you can still find the base of the Cauldron displayed at the Arena Park, in front of the OCBC Arena at the Singapore Sports Hub.





11. Kallang Airport

9 Kallang Airport Way

The first airport was opened in 1937 and during that period, flights were only going out to two towns – Penang and Palembang. The building with Art Deco stylings still stands today and was gazetted for conservation in 2008. “The aesthetics inside the building hail from an era where such buildings are not built anymore. If you get a chance to explore inside, the space is surreal,” shares local illustrator Lee Xin Li. The building is one of his favourites that he has drawn.

12. “Aspirations” Time Capsule

Stadium Rd, Singapore Sports Hub’s Waterfront

Perhaps one of the greatest local mysteries

concerns the missing ‘National Stadium time capsule’ which was buried in 1970, under the former Stadium’s foundation stone. Fast forward to the demolition of the National Stadium in 2010, the capsule was nowhere to be found even with the help of metal detectors and a \$50,000 lost-and-found reward! It still remains missing but in 2016, a new capsule for the Singapore Sports Hub was assembled.

It contains 50 items symbolic of Singapore’s sporting achievements, including gold medallist Joseph Schooling’s swim cap and sprinter Shanti Pereira’s running shoes and vest. Dubbed “Aspirations”, the new time capsule will be opened in 2040 when Singapore turns 75.

13. “Dream” Purple girl sculpture

North entrance of the Singapore Indoor Stadium

Check out an unusual sculpture featuring a floating purple girl connected by a tennis racket to a stainless-steel ball, created by local artist Baet Yeok Kuan. It also features handprints of famous tennis player, Billie Jean King, who founded the Women’s Tennis Association. The sculpture was jointly commissioned by Singapore Sports Hub, Sport Singapore and the WTA to mark the fifth and final year of the Women’s Tennis Association (WTA) Finals in Singapore. It serves to inspire the younger generation to pursue their passions and dreams and achieve their ambitions.



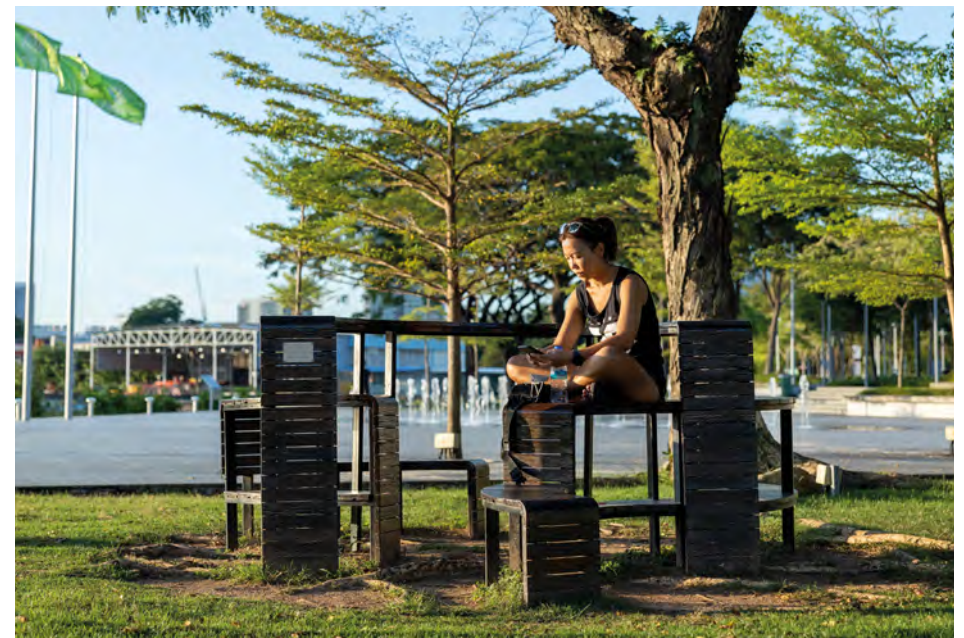
Sit on a piece of art

Around the Singapore Sports Hub

Rest on the 14 creatively designed public benches which offer more seating in the area but are also works of art. These benches are made of timber planks from the old National Stadium. These were winning designs from the 2017 Re:Bench competition by URA, supported by the Singapore Sports Hub.



To learn more about the Kallang story, check out the sports, arts and heritage trail by SportSG and the National Heritage Board.





East Coast and Katong

Once home to seaside houses, grand mansions and coconut plantations, the Katong and East Coast areas have a laid-back vibe, with a rich heritage and expansive beaches. The colourful shophouses in Katong continue to celebrate the Peranakan and Eurasian heritage. They contrast with local modern watering holes and a vibrant art scene.

“
What I love most about this area is that we can enjoy the best of every world, from beaches to parks, and many food choices.

Alvin Yapp, owner, The Intan

Explore

Explore remnants of the original coastline along East Coast Road, landmarks celebrating the Eurasian and Peranakan heritage and sandy beaches.

1. Hua Yu Wee Restaurant

462 Upper East Coast Rd
 Daily: 12.30pm to 3pm & 4.30pm to 10pm

Go down steps that used to lead to the beach at the Hua Yu Wee Restaurant, the last seafood restaurant left standing along Upper East Coast Road, within an original 1920s bungalow.

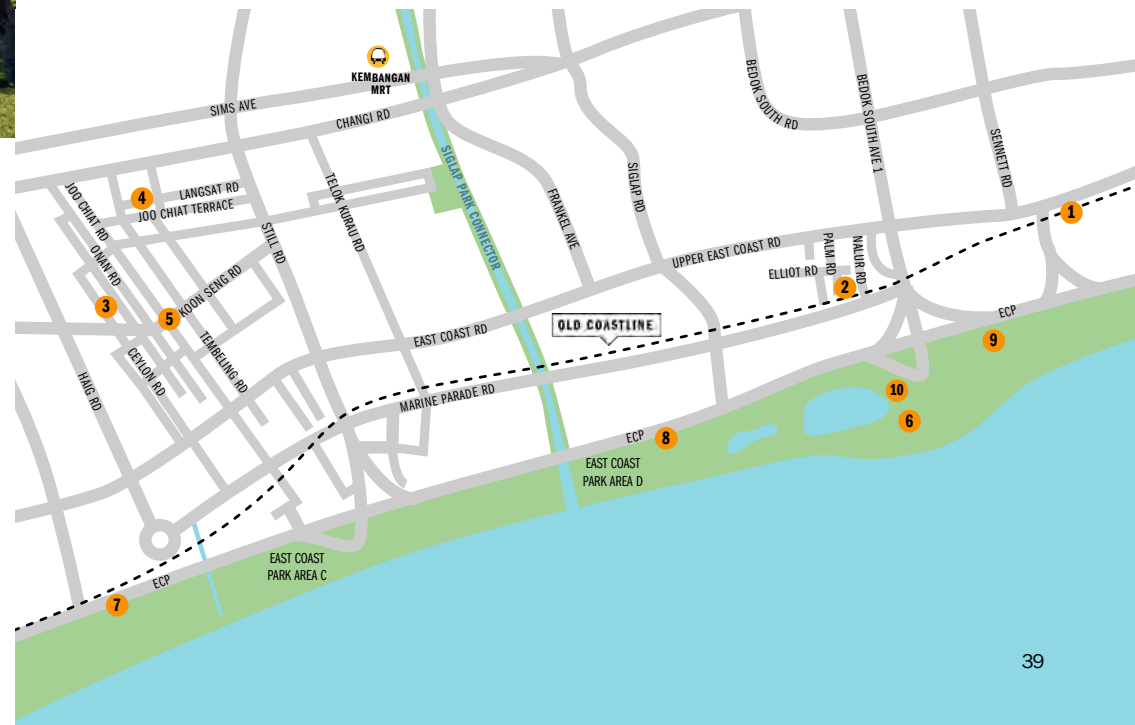
2. Former sea walls

Junction of Nallur Rd and Marine Parade Rd
 (behind 54 Nallur Rd)

Check out stretches of seawalls that trace the original coastal embankment. Its iron gates have seaside-themed motifs of coconut trees, the sun and clouds.

WHAT'S TO COME

To celebrate memories of the pre-reclamation coastline, the future Bayshore housing precinct will have a new linear park that features the old sea wall and a sea pavilion at 494 Upper East Coast Road.





3. Eurasian Community House

139 Ceylon Rd

Mon – Thu: 8.30am to 6pm, Fri: 8.30am to 5.30pm

The Heritage Gallery presents the rich history and culture of the small but vibrant Eurasian community that has contributed to shaping Singapore since the 1800s. Try the Devil's

Curry at Quentin's Eurasian Restaurant or the traditional sugee cake – a cake made from semolina and almonds and topped with marzipan.

4. The Intan

69 Joo Chiat Terrace

Visits are strictly by appointments only.

Immerse yourself in the Peranakan community's history and culture in this museum. It is a treasure trove of furniture, outfits and trinkets, all from the collection of the owner, Alvin Yapp. Book a tour at the-intan.com/book-a-tour for a more insightful and personal experience.

5. Colourful shophouses

Koon Seng Rd

The colourful pre-war shophouses along Koon Seng Road were built sometime around the 1930s. Spot the Chinese guardian lions that can often be found in the panel just below each shophouse window. The fine ceramic tiles with floral or geometrical designs also give the houses a distinctive look, which came to be known as Singapore Eclectic. Keep your eyes peeled for colourful murals in the area such as the Jousting Painters by Ernest Zacharevic, known for his murals in Penang.



Alvin Yapp, owner, The Intan

on his museum and go-to places

The Intan is a museum where its owner, Alvin Yapp, a Peranakan, showcases an extensive collection.

Why are East Coast and Katong synonymous with the Peranakan culture?

This is mainly because many Peranakan families used to live here, including my family, my grandparents and both my parents. My earliest memory of Katong was walking through the narrow laneways behind the oceanside houses.

What was the inspiration behind The Intan?

What you see in this museum are from my personal collection that I have slowly gathered over 30 years. The name 'The Intan' loosely translates to a rose-cut diamond in Malay which has many different facets. This reflects the museum's collection, where you can see the many different aspects of the Peranakan culture here.

What are your go-to places for Peranakan culture and food?

The worst question to ask a Peranakan boy is where to eat Peranakan food because the correct answer is home of course! For me, I think some of the places I would recommend getting your Peranakan cultural fix is the Peranakan Museum once it reopens, Blair Road for its beautiful houses and Emerald Hill for its architecture and antique shops. Food-wise, there's just too many – I love the Guan Hoe Soon and Chilli Padi Nyonya Restaurants and the Kim Choo dumplings, all along Joo Chiat Place.



Read the full interview with Alvin Yapp online





Once lined with kampungs, fishing and boating were familiar activities along the eastern coastline. Today, East Coast Park remains a popular destination with recreational activities for everyone, such as fishing, cycling and sailing.

6. Aloha Sea Sports Centre

107 East Coast Rd
Weekdays: 10am to 5pm, Weekends & Public Holidays: 9am to 5pm

Inheriting the spirit of sailing along East Coast, the centre offers a hands-on experience for sailing, windsurfing, stand-up paddling and other open sea sports for beginners and professionals alike.

Not interested in water sports? You can also just spend the day here with family and friends soaking in its laid-back kampung vibe, under the coconut trees and grab a cold beer or two at the beach café.




Read more online: Pandora Chew and Loh Fock Jin from Aloha Sea Sports on why they love East Coast and water sports

7. Coastal PlayGrove

902 East Coast Park Service Rd
Tue – Sun: 8am to 8pm. Best to visit on weekdays.

Check out the tallest outdoor play tower in Singapore, inspired by the previous Big Splash, which used to have an iconic water slide, once the longest and the highest in the world.

Try the Vertical Challenge in this tower – scramble up colourful rope obstacles from stepping pods, to hammocks and a grip wall. Take in the sea view at the top and go on a thrilling and smooth ride down through metallic tubes from the fourth and third levels. This is suitable for 13-year-olds and above.

There is also a small play garden designed with natural wood and sand for kids age 3 to 12. Look out for a bamboo tunnel trail, wooden teepees for some pretend-play camping, a trail created with logs, and a sand pit. The best part of this whole play area is it is free!



8. Cyclist Park

East Coast Park Area D
 A one-stop hub for kids and grown ups to hone their cycling techniques – the 5.4-ha Cyclist Park includes a BMX trail for novices to improve riding stability, and an advanced circuit with undulating tracks, zig zag columns and narrow bridge for one to train their manoeuvring skill.

9. Xtreme Skate Park

1 East Coast Terrace
 The largest skatepark in Singapore features a mix of obstacles for both novice and advanced skaters to practice and showcase their flips, grinds and other gravity-defying tricks. Bring your own wheels and hit the terrain with its combo bowl and a whopping 3.6 m vertical bowl.

10. East Coast Lagoon Food Village

1220 East Coast Parkway
 Strategically located along the beachside bustle of East Coast Park, it is a perfect place to refuel after a day out at the beach. The best time to visit is at dinner where many flock to this popular place for its *satay*, fried carrot cake, *rojak*, oyster omelette and fresh coconuts.



Credit: NParks

Eat

Eat your way around the variety of eateries in Katong.

Baba Chews

86 East Coast Rd
 Wed - Thu: 11.30am to 9.30pm,
 Fri: 11.30am to 10pm, Sat & Sun: 11am to 10pm

For traditional Peranakan cuisine with a modern twist, visit Baba Chews. The popular signature is the *otah you tiao* where a slab of homemade *otah* is sandwiched between charcoal dough fritter.

Guan Hoe Soon

38 Joo Chiat Pl
 Mon - Fri: 10am to 3pm & 6pm to 9.30pm,
 Sat & Sun: 10am to 3pm & 5.30pm to 9.30pm

Guan Hoe Soon is one of the last few bastions of authentic Peranakan dining in Singapore since opening in 1953. It is known for its signature dishes like *ikan assam nenas pedas*, *babi pongteh* and more.

328 Katong Laksa

51 East Coast Rd
 Daily: 9.30am to 9.30pm

The iconic *laksa* dish is synonymous with these streets - after all, the famous Katong *laksa* wars were fought here. In 2000, multiple *laksa* stores fought for supremacy on East Coast Road. Today, only three of the original five stalls remain, including 328 Katong Laksa.

Rumah Kim Choo

111 East Coast Rd
 Daily: 9am to 9pm

Pick up the family's signature pyramid-shaped rice dumplings from Rumah Kim Choo. They come wrapped in bamboo leaves and stuffed with savoury fillings such as chicken and chilli prawn. Visit the heritage gallery upstairs to bring home a Peranakan souvenir or bespoke *kebaya*.

Mr. and Mrs. Mohgan's Super Crispy Roti Prata

300 Joo Chiat Rd
 Daily: 6.30am to 1pm (come early to avoid disappointment)

Since 2006, this famous *prata* joint run by a husband-and-wife team is known for its crispy \$1 *prata kosong*. Customers also get to choose between fish, mutton or dhal curry to complement their order.

Sinpopo Brand

458 Joo Chiat Rd
 Mon - Sun: 11am to 9pm

Sinpopo Brand aims to emulate Katong as it was in the 1950s. Expect Peranakan fare made the traditional way, with freshly prepared *rempah* from scratch. The signature dish is its *nasi lemak* set with chilli fishballs.

Micro red | house

75 East Coast Rd
 Wed - Fri: 8.30am to 4pm, Sat & Sun: 8.30am to 5pm

Affectionately known as the Red House Bakery, this place was famous for its Swiss rolls and curry puffs and was the first in Singapore to provide Western-style wedding cakes in the 1920s. Today, it is home to a hip bakery known for its sourdough loaves and brunch fare.

Delicious Boneless Chicken Rice

Katong Shopping Centre, 865 Mountbatten Rd
 Tue - Sun: 10.30am to 7.30pm

This stall commands snaking queues at the basement of Katong Shopping Centre. Opened in 1989, the signature chicken rice is served with your choice of roasted and steamed chicken, homemade chilli sauce and free-flow *achar*. Instead of plain chicken broth, customers can enjoy hearty traditional Chinese soup.

The Humble Scoop

Katong Shopping Centre, 865 Mountbatten Rd
 Tue - Fri: 12nn to 8.30pm,
 Sat & Sun: 12nn to 9.30pm

Using local ingredients, The Humble Scoop dishes out nostalgic flavours like classic *pulut hitam* and *gula melaka*, but also more unusual ones like haw flakes and calamansi.



Bras Basah. Bugis

Located in the heart of Singapore's civic centre, the Bras Basah.Bugis area has a long history. Regenerated over time, this area exudes a lively energy and charm. Its eclectic neighbourhoods are filled with historic landmarks and key museums, while vibrant arts and design institutions contrast with long-standing complexes with homely food spots and diverse shops.

Explore

What many may not realise is part of the Bras Basah.Bugis area has many century-old landmarks and green spaces. Stroll through history with us.

1. Fort Canning

Bounded by Hill St, Canning Rise, Clemenceau Ave and River Valley Rd

Start your walk at the top of this iconic and familiar hilltop. Once the centre of ancient Singapura that thrived in the 14th century, this was the site of palaces of 14th century kings and later served as the headquarters of the Far East Command Centre and British Army Barracks. Check out some of its highlights:

- Singapore's first botanical garden founded in 1822 by Sir Stamford Raffles and now restored
- The ancient bath re-created, once used by noble ladies of the royal court of Singapura
- Fun swings, see-saws, logs and slides at the Jubilee Park

You can also experience this place through an augmented reality trail, BALIKSG. This trail is 2.5 km long and has eight checkpoints throughout the park.



4. 53 Armenian Street

This shophouse unit is special in two ways: the restaurant, Le Bistrot Di Sommelier, serves up fresh and new dishes regularly in a warm and rustic ambience. More than 30 years ago, this unit was beautifully restored by French architect Didier Repellin, known for his restoration work in Singapore in the 1980s and 1990s. It took 14 craftsmen 10 days to restore it in 1987, an amazing feat for a project of such scale. Stroll around this pedestrianised street.

5. SMU Campus Green

70 Stamford Rd

Take a respite from the bustling streets in this green space which has witnessed the evolution of the city. Once the grounds for Bras Basah Jail in the 1830s, it became Bras Basah Park in the 1970s and was integrated as part of the Singapore Management University (SMU)'s campus in 2005. Enjoy its many mature trees transplanted and replanted, retaining its natural heritage.

2. CHIJMES

30 Victoria St

The popular Chijmes was originally the Convent of the Holy Infant Jesus (CHIJ), a girls' school established in 1854. "This was a cluster of buildings lovingly built by the Catholic Fathers and the craftsmen they engaged," shares Pamela Lee, who championed conservation efforts in the 1980s. "Take a good look at the decorative columns on the walkway leading from the Chapel to the adjoining building. Some of them are finer than any sculptured piece of art you would find in an art gallery."

3. Armenian Church

60 Hill St

Daily: 10am to 6pm

This is the oldest Christian church in Singapore built in 1835. There is a Memorial Garden inside, where you will find the tombstone of Agnes Joaquim, who hybridised Singapore's national flower, the Papilionanthe Miss Joaquim orchid. Visit the Armenian Heritage Gallery with rare artefacts, books and photographs, open by appointment only. Contact gallery@armeniansinasia.org.





From SMU Campus Green, meander through Bencoolen Street with heritage blogger Jerome Lim. “When I was a student at the St Joseph’s Institution, now the Singapore Art Museum, I knew it as the place for its books, sporting goods and, in my opinion, Singapore’s best Indian *rojak* (270 Queen St).” Some of Jerome’s suggested places to check out:

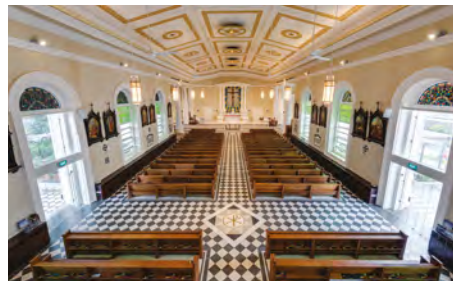
6. SPACE Asia Hub

77 Bencoolen St

This best reflects the area’s old and new. Behind the glass façade encasing high-end designer furniture, you will find an old two-storey villa (No. 81), that has been beautifully restored, along with two other adjacent shophouses (Nos. 71 and 73), with its mix of Malay, Chinese and colonial influences revived.



Credit: Cathedral of the Good Shepherd



Credit: Cathedral of the Good Shepherd

7. Stamford Arts Centre

155 Waterloo St

This building was originally built in 1920 as the Japanese Elementary School. According to Jerome, it contributed to the Japanese flavour of the area in the early 20th century when various Japanese businesses moved to the area. Today, it is home to traditional arts groups. Join its augmented reality walking trails to learn more about the centre and its artists. You can also get a 360-degree view of a traditional Chinese opera stage here. Visit nac.gov.sg for more info.

8. St. Joseph’s Church

143 Victoria St

Established in 1853, its blue and white azulejo tiles are the most striking references to its Portuguese roots. Jerome reveals: “You’ll find more evidence of its heritage inside. In the church’s annex building, called the Parochial House, a spartan room and a tiny chapel – they were once set aside for use by the Bishop of Macau – have been religiously preserved. And for the small community of Portuguese Eurasians in Singapore, the church still retains

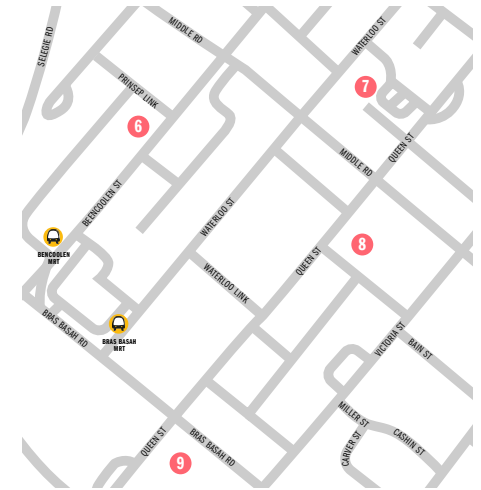
a few Iberian rituals. One such tradition is a grand procession that turns its grounds into a sea of candlelight every Good Friday.”

9. Cathedral of the Good Shepherd

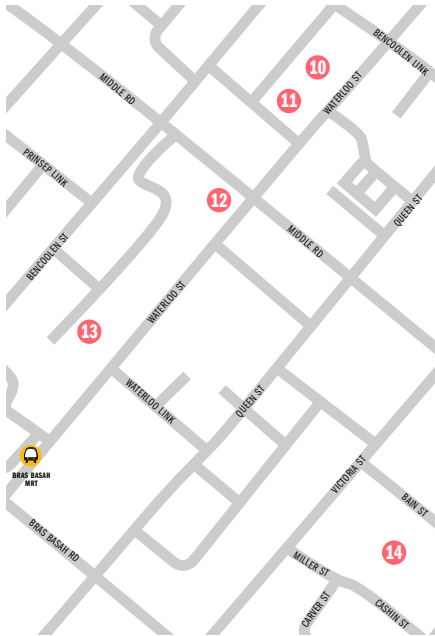
A Queen St

Sat: 3.30pm to 7pm, Sun: 8 to 11.30am & 5.30pm to 7pm

Its parish was established in 1832 and its buildings were completed in 1847, making this the oldest Catholic church in Singapore. Jerome adds: “A past restoration effort unearthed a forgotten time capsule. The contents of about 30 artefacts date back to 1843, when the Cathedral’s cornerstone was laid, and are now on display in its heritage gallery. It is also home to Singapore’s oldest pipe organ, a 1912 Bevington and Sons instrument.”



Credit: Cathedral of the Good Shepherd



10. Kwan Im Thong Hood Cho Temple

178 Waterloo St

The smell of incense wafts through the air as a trickle of devotees stop to pray outside the temple. During the Japanese Occupation, it provided refuge for the sick, wounded and homeless. In fact, Waterloo Street has been an epitome of Singapore’s religious melting pot since the mid-19th century. The atmosphere bustles with fortune tellers, palm readers and flower vendors.

11. Sri Krishnan Temple

152 Waterloo St

Daily: 8am to 12pm & 6 to 8.45pm

Two doors down, the colourful Sri Krishnan Temple stands. An urn is strategically placed outside the Hindu temple, complete with incense rising from the joss sticks. The temple is Singapore’s only South Indian temple dedicated to Sri Krishna and his consort Rukmini.

12. Former Sculpture Square

155 Middle Rd

The area has become a muse for artists and creators over the years – and a testament to that is the former Sculpture Square. It was the brainchild of local sculptor Sun Yu-Li, who converted an abandoned 19th-century church building for the development and exhibition of three-dimensional art. Now, you can find photography centre **Objectifs**, where you can pop in for an exhibition, or have a hearty meal at Middle Eastern-inspired restaurant **Artichoke**.



13. The Theatre Practice

54 Waterloo St

Mon – Fri: 10am to 5pm, Sat: 9am to 3pm

The white and blue shophouse is home to the longest-standing professional bilingual theatre institution in Singapore. Watch a performance or have a cup of tea or coffee while reading a selection of books by local celebrated playwrights.

14. Bras Basah Complex

231 Bain St

Over at Bain Street, Bras Basah Complex is a destination for art aficionados and artists in Singapore. Visit the myriad of art galleries, browse the dusty covers of books in second-hand bookstores, or sift through design books at Basheer Graphics – popular amongst art students and design professionals.



WALKABLE STREETS

Many of the streets in this area are a delight to stroll around with their wider sidewalks and lesser road lanes. Look out for quirky public benches along Bencoolen and Queen Streets, designed by the Nanyang Academy of Fine Arts (NAFA) students. Waterloo Street will have more spaces for people and events along its pathways in future.



Local chef Bjorn Shen on his love for the area and must-eats



Credit: Bjorn Shen

One of the longest standing restaurants in the area since 2010, Artichoke (161 Middle Road) serves up fun and creative eats inspired from Middle Eastern flavours. Examples include fish *koftas* (fishballs, but more like meatballs) and a roasted half-head of cauliflower slathered in yogurt, served to a backdrop of 60's soul and 90's hip-hop. Its chef and owner and a Masterchef Singapore judge, Bjorn Shen, let us in on the charm of the area and where to eat.

Why did you choose for Artichoke to be located here?

I love the aura of the place and the need to discover it. You can't quite see the restaurant from the main road. But when you finally find the place, it is a hidden space that amazes you and this makes the place more special.

How do you see the restaurant adding to the identity of the area?

The area contributes to Artichoke's identity and in turn, it has become synonymous with the area as well, in a building that is changing colour - there was one time it was reflective silver (Objectifs and Chapel Gallery) and now it is bright yellow.

What do you like about this area?

We've always felt like we didn't fit in this area. That's why we love being here. Because we didn't fit. It is surreal to eat in a place like that. And then for people to walk out after that, and suddenly be surrounded by religious ornament shops and uncles and aunties walking by - this is perfect. It's the juxtaposition of contrasting experiences and the relaxed vibe that makes this area unique.



Eat

There are so many varieties of food choices here. We share some highlights of Bjorn's must-eats.

Fortune Centre

190 Middle Rd

"I always tell people to check out Fortune Centre, especially the vegetarian shops inside that retail different products. They sell all sorts of unique and niche items, like vegan XO sauce, mulled barley powder, and soy lecithin."

Löwe'f Artisanal

1 Queen St

Tue - Fri: 8am to 3pm, Sat: 9am to 3.30pm

This humble café, located within Kum Yan Methodist Church along Queens Street, is run by a husband-wife duo who bakes their own pastries and does their own brews. "It is a small cafe with about 30 or 40 seats - it is the best hidden find in this area. You can really feel the love they put into this cafe."

Wildfire Burgers

80 Bencoolen St

Mon - Fri: 12pm to 3pm & 5.30pm to 10pm, Sat & Sun: 12pm to 3pm & 4.30pm to 10.30pm

Wildfire Burgers has found a new home at the Nanyang Academy of Fine Arts. The menu remains dedicated to its signature creations of juicy stacks, grilled over binchotan charcoal.

Chirashi King Kong

91 Bencoolen St

Daily: 11.30am to 7.45pm

Chirashi King Kong serves up Japanese-inspired, truffle-laced rice bowls. "The smell hits you in the face," shares Bjorn. "They put raw fish on top of this super intense truffle-flavoured soy sauce rice."

Atas Turkish Kebab

190 Middle Rd

Mon: 10am to 2am, Tue - Sun: 10.30am to 2am

Beyond a spice-heavy selection of kebabs, falafel, and a special Turkish-style balloon bread, the extensive menu at Atas Turkish Kebab also provides options of baked pasta and pizza to fill the tummy.



Tanjong Pagar and nearby neighbourhoods

Singapore's first live-work-play neighbourhood in the city, Tanjong Pagar and its surroundings are teeming with workers, residents and visitors. Home to diverse businesses, creative industries and a growing live-in population, there is a rich tapestry of old and new. Along beautiful walkways and conserved shophouses are delightful nooks, cosy pocket parks, historic

clan houses, temples and endearing community spaces.

Explore

Behind the many eateries, shops and offices, take a walk around Tanjong Pagar and its nearby neighbourhoods to discover its hidden gems and intimate spaces.

Tanjong Pagar Road

The distinctive Tanjong Pagar Road was one of the first few areas that had large-scale restoration of its shophouses and improvement efforts carried out in the 1980s. Look out for some of the unusual elements created because of these efforts.

1. Terracotta roof bus stop

120 Tanjong Pagar Rd

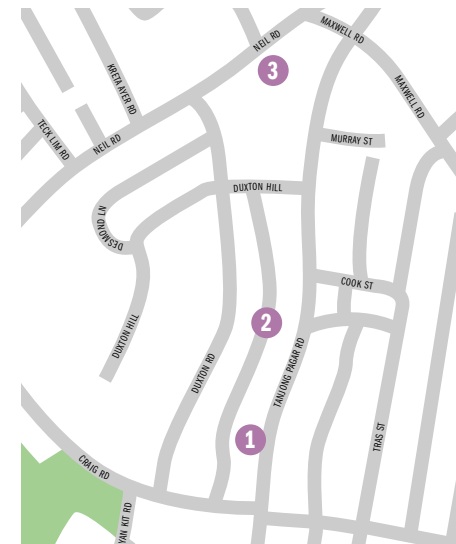
See if you can spot this unusual bus stop – you won't find such a bus stop anywhere else. This unique bus stop features a gable profile and granite seats. It was specially designed to blend in with the striking streetscape along Tanjong Pagar Road.



2. A jagged back lane

Between Tanjong Pagar and Duxton Rd

If you look closely, you will notice a jagged back lane between Tanjong Pagar Road and Duxton Road. Specially created in the 1990s to provide essential electrical and water services for the area, it reflects the unseen work needed to sustain historic districts. This back lane is now part of the charm of the area.



3. Tea Chapter

9 Neil Rd

Sun – Thu: 11am to 9pm, Fri & Sat: 11am to 10.30pm

Step into this rare teahouse that has been around for more than 30 years. This was one of the first few shophouses to be carefully restored to show its value. Paying homage to teahouses of old, you can choose Oriental, Korean or Japanese style seatings. Go for its signature Imperial Golden Cassia, which is the same tea that Queen Elizabeth II and Prince Philip drank when they visited this shophouse in 1989.

Telok Ayer and Amoy Streets

Telok Ayer and Amoy Streets are two of the oldest streets developed in the 1820s. Imagine the original waterfront that used to run along Telok Ayer Street today. You can see traces of the diverse communities that settled here through its many different landmarks.

4. Thian Hock Keng Temple

158 Telok Ayer St
Mon – Fri: 7.30am to 3.30pm, Sat & Sun: 7.30am to 5.30pm

Visit Singapore’s oldest Hokkien temple. Starting as a prayer house and dedicated to Ma Zu, the Goddess of the Sea, early Chinese immigrants came here to give thanks for their safe passage across the South China Sea. Keep an eye out for its traditional southern Chinese architecture style with its detailed carvings of dragons, phoenixes and deities and colourful broken porcelain on the roof ridges – a Fujian decorating technique. Also spot the Peranakan floor tiles in the two side courtyards and at the back of the temple, and the wrought iron gates at the entrance that were imported from Scotland during a 1906 renovation.



5. Former Nagore Durgah

140 Telok Ayer St
Mon – Fri: 10am to 5.30pm, Sat: 9am to 1pm

Head in to learn more about the Indian Muslim community at this Indian Muslim Heritage Centre. Multimedia exhibits tell the story of pioneers of this community in Singapore. This building was a former shrine built by the Chulia pioneers from South India to commemorate Sayyid ‘Abdul Qadir Shamul Hamid, a South Indian saint and Islamic preacher.



Direct Cheong Kok Hwee

live along this narrow stretch, including Cheong Kok Hwee’s grandparents, who lived here from 1974 to 1987? He recalls: “There used to be quite a maze of households here. At the top of the hill was the communal toilet and bathing area. As there was no electricity provided, my grandparents would tap on the power lines from their landlord’s house for electricity. I spent part of my growing up years here learning how to ride a bicycle and exploring the shops along Club Street and Ann Siang Hill.”



7. Hoo Kee Bak Chang

7 Maxwell Rd, Amoy Street Food Centre

Sink your teeth into Hokkien-style *bak chang*, typically filled with dark glutinous rice stuffed with marinated meat, crunchy chestnuts and wrapped in bamboo leaves. This stall is run by third-generation owner Ryk Chew, and started by his grandfather in 1948 at 104 Amoy Street.

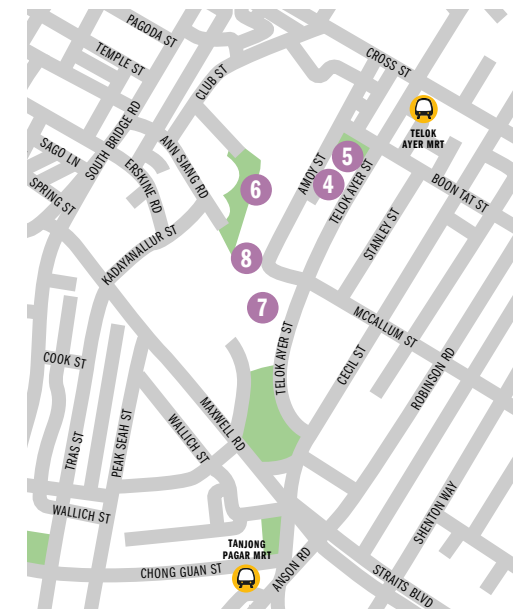
8. Siang Cho Keng Temple

66 Amoy St

This Fujian-style temple sits at the foot of former Mount Erskine, directly facing the original waterfront. According to folk beliefs, this gives stability and prosperity. Look out for the historic Tiger God shrine – one of the few places where you can see the original rock formation of Telok Ayer.



More stories about Amoy and Telok Ayer Streets are on *City Stories*. Browse through maps, photos, videos to explore the multiculturalism and evolution of these streets.



Clara Keng, Administration Manager, (9) Tong Mern Sern

on living and working at this
unique antique shop

This is likely the only shop in this area that has stood the test of time. Clara once lived on the upper floors of this shophouse and is now helping to manage the shop.

How did your father get started on this shop?

My father loves to collect things, repair them and find new value for them. He started selling antiques at the back of a shop along Tomlinson Road some 40 years ago and moved to several places before settling into this shop in 1989.

What is your one favourite item in the shop?

It is a 150-year-old music box that is almost human-sized. My father discovered this piece in Penang more than 30 years ago. He spent years restoring it. It is fun to manually wind it up. You can still hear it playing a soft melody.

Having lived here for some years, what do you like about this place?

I love the green space behind the shop, which is Duxton Plain Park. I remember climbing the trees and feeding the monkeys here.



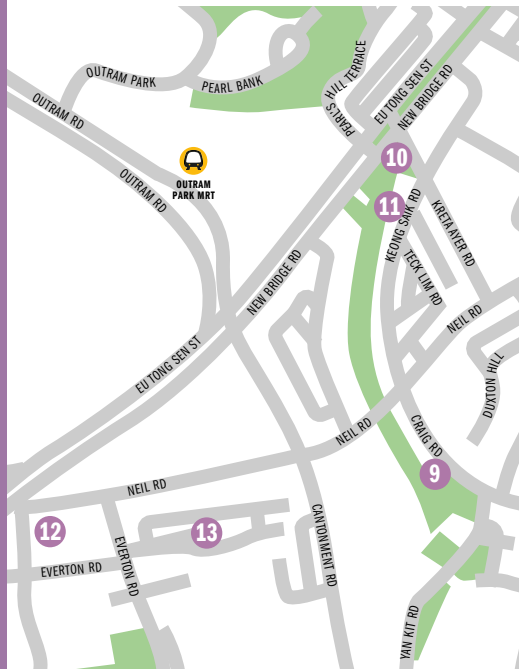
Keong Saik, Craig Roads and Everton Park

Layered with rich history and long-time communities, there are many stories behind the various long-standing shop owners, buildings and green spaces in this area.

10. Duxton Plain Park

New Bridge Rd

This cosy green space behind Tong Mern Sern is the smallest park in Singapore. It used to be the site of the Singapore-Kranji Railway line, dismantled in 1925. Here, you will find a shrine or *keramat* with yellow tiles on a green base. Its design is typical of Malay royalty in Southeast Asia.



11. Keong Saik Rd

“Growing up on Keong Saik was colourful. The sense of community was probably the closest I could experience to living in a real kampung,” recalls writer Charmaine Leong, who shares her growing up years here in her book, *17A Keong Saik Road*. Some of her favourite places along this road are:

- **The historic (13 Keong Saik Rd):**

“The Chinese temple here looks exactly like how I remember it. It did not add any fresh colours of paint but is well preserved over the years.” Built in 1928, it played a major role in the lives of women who had sworn vows of celibacy and worked as domestic workers between the 1930s and 1970s.

- **The traditional (35 Keong Saik Rd):** For over 70 years, Tong Ah Eating House occupied the distinctive red-and-white unit sitting on a triangular plot. Now just a few doors away, this place continues to serve up its usual breakfast fare. For dinner, try unique *tze char* dishes like scallop rolls and spicy fragrant chicken.

12. NUS Baba House

157 Neil Rd

Wed – Fri: 10am to 11am, Sat: 1pm to 4.30pm

It is the last remaining intact Peranakan residential home in Singapore and retains many unique architectural features of fine quality and workmanship. Built around 1895, it is both a living museum and a showcase of good restoration work.

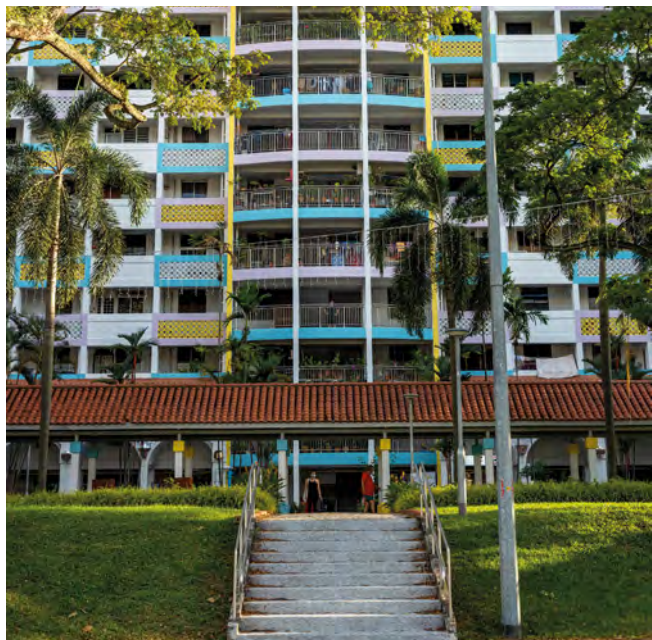




13. Everton Park

Just around the corner is one of the oldest neighbourhoods in Singapore. It makes for a charming stroll along its low-rise walkways to visit its many shops and cafés.

- **The Better Half (#01-43, Block 1 Everton Park 1 Everton Park):** Try freshly baked cakes with flavours like rose raspberry, vanilla salted caramel and coconut passionfruit.
- **Ji Xiang Confectionery (#01-33, Block 1 Everton Park):** Try traditional *angku kueh*, made from scratch with glutinous rice flour with sweet and savoury fillings. This shop has been around since 1988.
- **Little Oasis (#01-79, Block 3 Everton Park):** Come here for simple and wholesome breakfast food in a quiet and cosy corner.



Development owners and the community have been working together to shape some of the spaces in the Tanjong Pagar area.

Discover Tanjong Pagar Community Green

The placemaking group, Discover Tanjong Pagar, has adopted this space and aims to plant a total of 100 trees over five years. The first 16 trees have already been planted in 2020. Watch out for a fun children's playground here with rest areas for adults too.

Credit: DTP



Guoco Tower's Urban Park

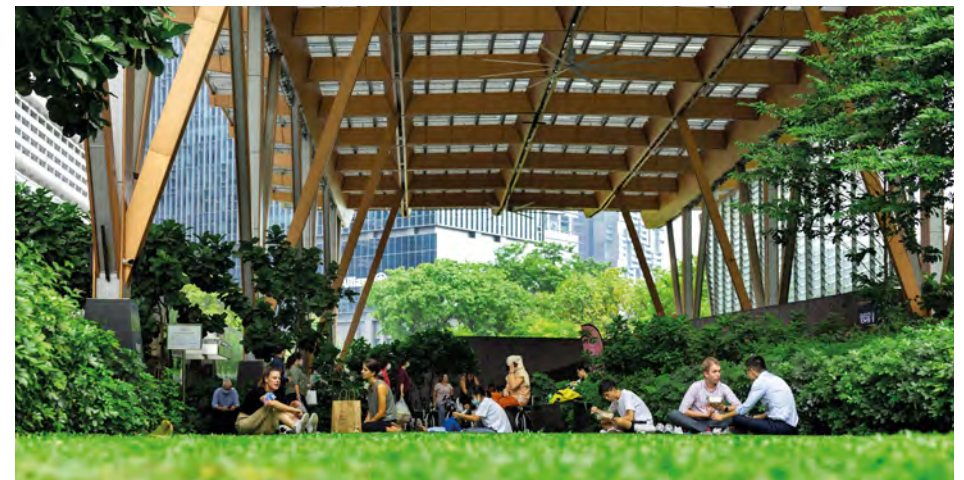
This is one of the largest public spaces in a building. Come here to take part in regular activities, or just stop by to take in the surroundings.

Tanjong Pagar Plaza

Built in 1977 as part of the public housing development, the plaza and food centre have many familiar long-standing shops and stalls. Get a welcome spicy kick from the curry puffs at Rolina Traditional Hainanese Curry Puff, or satisfy your sweet tooth with the fluffy and pocket-friendly muffins from the old school bakeshop Chocolat N' Spice.

CHECK OUT SOME INSTA-WORTHY SPOTS SUGGESTED BY DISCOVER TANJONG PAGAR:

- At the start of Duxton Plain Park just after Neil Road
- From the top of Guoco Tower's park near Starbucks looking back
- Level two of Tanjong Pagar Plaza looking at Tanjong Pagar and Yan Kit Roads



Little India

Colourful and authentic, this historic district was originally known as *Kandang Kerbau* ('Buffalo Pen' in Malay) or *Tekka* ('Foot of the Bamboo Trees' in Hokkien). It's evolved to be the heart of Singapore's Indian community and more, a melting pot of many cultures. Traditional shops sit alongside historic landmarks of its multi-cultural past and present.

Explore

Meander through historic religious landmarks, unusual shops and a digital studio, learn more about Little India's rich history and interesting personal stories behind some of its attractions.

1. Sri Veeramakaliamman Temple

141 Serangoon Rd
Daily: 8am to 12pm & 6.30pm to 9pm

One of the oldest Hindu temples in Singapore, it is dedicated to Goddess Kali. In its earliest days, it provided refuge to Indian settlers. During the World War II air raids, many sought refuge at the temple and prayed for Kali's protection. As luck – or fate – would have it, the temple escaped the bombings unscathed.

2. Church of the True Light

25G Perak Rd

Built in 1952, look closely at the conserved church's walls and pillars and you will find biblical principles written in elaborate Chinese script. It holds services in English, Mandarin, Singalam, Hindi and Malayalam – a testament to Little India's cultural diversity.

3. Abdul Gafoor Mosque

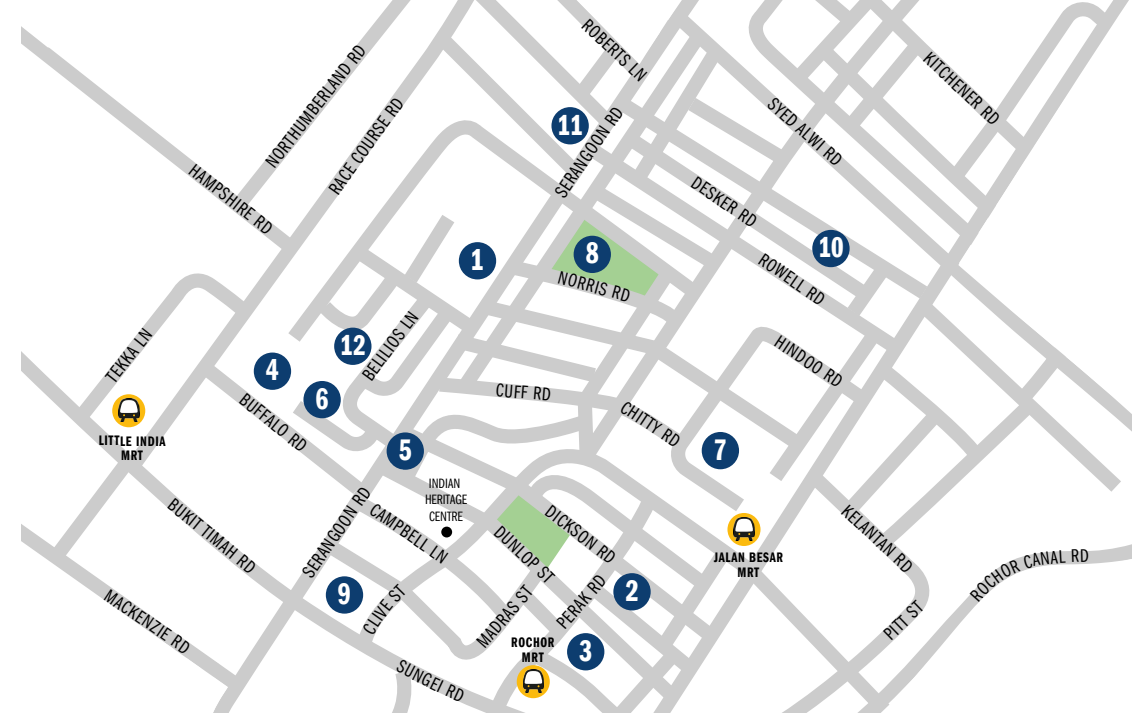
41 Dunlop St
Mon - Fri: 1pm to 9pm, Sat: 9am to 1pm

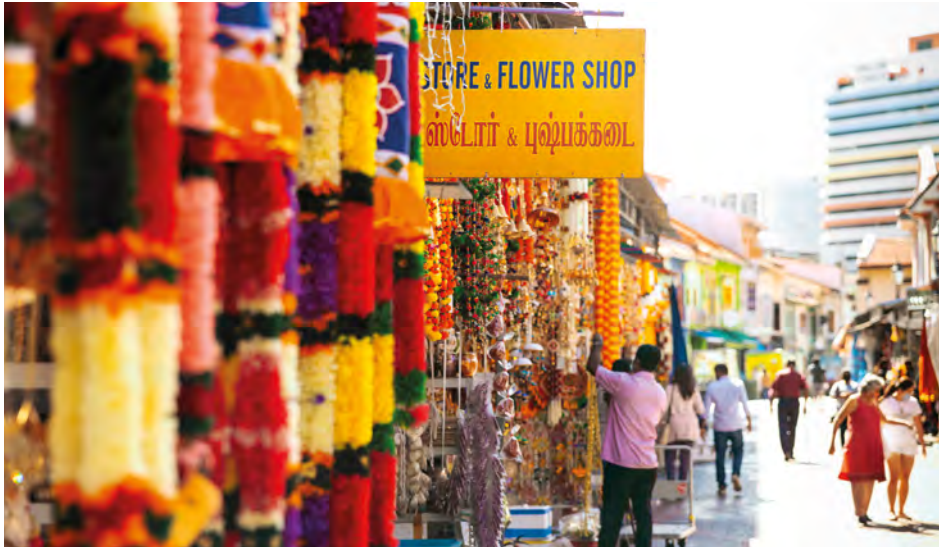
Built in 1910, the architecture of this mosque features Indo-Saracenic and Roman elements. Here, you'll find details like stars and crescent moons and an elaborate sunburst above the main entrance adorned with the names of 25 most prominent Islamic prophets. The prayer hall is raised above ground level, with interiors featuring fine Arabic calligraphy and stained glass. Non-Muslim visitors can visit the public areas and modesty cloaks are available to borrow for free.

4. House of Tan Teng Niah

37 Kerbau Rd

Built in 1900, the former house of Tan Teng Niah is believed to be the last surviving Chinese villa in the area. Tan Teng Niah was a *towkay* who owned several sweet-making factories along Serangoon Road. On the entrance door is a gilded name plate with the inscription *Siew Song*, which means "refined pine", a symbol of endurance in Chinese culture. Many believe that Teng Niah built this house for his wife and that the inscription referred to her.





5. Jothi Store and Flower Shop

1 Campbell Ln

Mon - Sat: 10am to 9pm, Sun: 9am to 7pm

Catering to the cultural, religious and social needs of the Indian community, this is a one-stop shop for all purchases for customs and rituals from childbirth to funerals. Besides flowers and blooms, the store retails everything traditional like coloured rice used for *kolam*, *pooja* (offering items), copper goods, and henna. It started out as a small flower stall in the 1960s, named after the owner's daughter Jothi. Today, the shop takes up five-storeys.

6. Sajeev Digital Studio

23 Kerbau Rd

Sat - Thu: 10am to 8pm, Fri: 10am to 10pm

This hole-in-the-wall shop welcomes you with a wall of portraits, largely of male migrant workers. Yet its lived-in, non-air-conditioned setting makes you feel entirely at home. Started by self-taught photographer K. Sajeev Lal with his wife Sheeja Shaj, a service offered here is taking portraits of migrant workers seeking brides back home. According to Sajeev, most of the workers who send back photos have found wives. He himself found his wife the same way.



Rajkumar, Programmes & Partnerships Manager, Indian Heritage Centre

on his love for Little India and shaping its identity

The Indian Heritage Centre is a one-stop destination to understand Indian culture in cosmopolitan Singapore, it is home to over 450 artefacts.

What fascinates you about Little India?

It feels like a 'time capsule' that offers a glimpse of the past but is set in today's modern context. I feel inspired every time I explore its streets and alleyways.

What are some diverse communities that you can find here?

There are representations of all of the different Indian sub-groups that call Singapore home here. For example, Dunlop Street was the locus of the Hindustani community, while Masjid Abdul Gafoor was the focal point of Tamil Muslims and Boyanese residents who lived nearby at Kampong Boyan.



How is the centre contributing to its evolving identity?

Even though the area has changed over the years, it still serves as a focal point for Indian communities. What it stands for remains – there is still a sense of rawness when you visit this immersive place. Together with the team at Indian Heritage Centre, I hope to continue to raise greater awareness of the cultural richness and living cultures of such a remarkable enclave.



Read the full interview with Rajkumar online

Beyond its vibrant architecture and lively communities, there are more things to uncover in this eclectic neighbourhood.

7. Loops Garms

635 Veerasamy Rd
 Fri – Sun: 12pm to 7.30pm

Located beneath a public housing block on Veerasamy Road is an old-school neighbourhood barber. A trip to Japan inspired owners FJ Sai and Isaac Ang to open a store in Singapore. Browse its curated collection of '80s and '90s apparel like plaid shirts, classic graphic tees and sports jackets from your favourite sports brands. The duo posts daily on Instagram (@loopgarms) showcasing what's available.

8. Project Oasis in Little India (POLI)

Clive St
 Take a picture next to the life-sized cows at Clive Street or colourful elephants at Hindoo Road. Look out for more pop-up art installations on these two small pockets of green, that is managed by Little India Shopkeepers & Heritage Association and Singapore Tourism Board under the POLI project as part of their efforts to transform unused land into attractive public spaces.

9. Slurping Good!

Tekka Place, 2 Serangoon Rd
 Daily: 10am to 10pm

Explore this whimsical themed experience featuring 13 interactive zones dedicated to instant noodles, with each exhibit representing the different ingredients that go into a cup noodle. At the Noodle Lab, you can try your hand at crafting the ultimate cup noodles of your choice.



88181/SHS



10. New World's End audio-guided walk

85 Desker Rd
 This audio-guided walk combines fiction and history to reveal the stories of the iconic New World Amusement Park and the rich history of the area. You will go down back alleys, hidden rooms and fantasy spaces. To join, purchase tickets from ohopenhouse.org.

11. Dancing in Unison

Broadway Hotel, 195 Serangoon Rd
 Singaporean artist Sam Lo collaborated with Indian artist Bhajju Shyam to create one of the tallest murals in Singapore. Every element in the work – from the tree with vibrantly coloured sparrows and the deer – alludes to the dance between urban living and nature.

12. Mayura

22 Belilios Ln
 Mayura on 22 Belilios Lane, on the other hand, was conceptualised by veteran local street artist Muhammad Taufiq Rosle (known in art circles as Boon) and South American artist Jaba. The name is a direct translation of "Peacock" in Sanskrit, a culturally significant animal that symbolises the cycle of time in Hindu scripts. The 70 m mural is also the longest mural in Little India.



Eat

From *chapatis* and curries to *batturas* and *biryanis*, the food options are endless. It's not always about traditional thali dishes and crispy *prata* – Little India has many other culinary gems.

Tekka Market

Bukit Timah Rd

“With many of the hawkers operating here for years, Tekka Market is certainly worth a trip,” says Rajkumar. Here are his recommended must-eats:

My favourite is **Allauddin's Briyani**, although all the stalls here are pretty good.

Then make a stop at **Generational Coffee** for artisanal coffee or **AR**

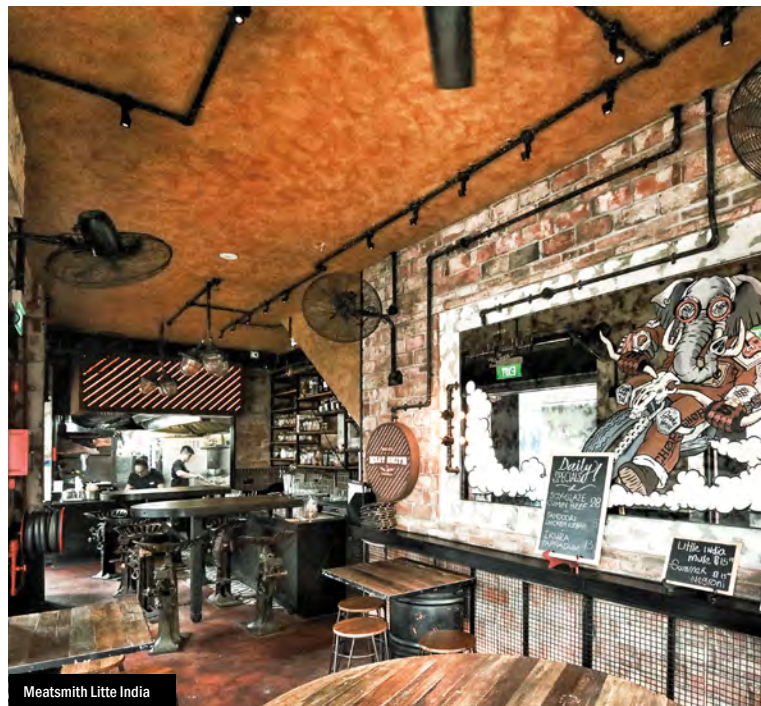
Rahman Café for some teh tarik, ginger tea or Bru Coffee.

For a quick snack, try the *appams* from **Deens Food Stall Appam Specialist** and have a meal on banana leaf at **Ayya Indian Food**.

Madras New Woodlands

14 Upper Dickson Rd
Daily: 9am to 10.30pm

This popular eatery serves predominantly South Indian dishes – like *pongal*, a sticky mix of rice and lentils cooked in milk and served with three sauces. The paper *thosai* is also popular – light and crispy, it retains its crunch even after being drenched in curry. **Fun fact:** Prime Minister Lee Hsien Loong and his wife frequent this vegetarian eatery regularly.



Meatsmith Little India



Tekka Market



Sweet Choon



Madras New Woodlands

Lagnaa Barefoot Dining

6 Upper Dickson Rd

Tue – Sun: 11.30am to 10.30pm

Featured in the Michelin Bib Gourmand, this bistro serves up both North Indian and South Indian dishes. Head up to the second floor, sit on the wooden floor barefoot and sip on a piping hot cup of *masala chai* – or take on the unconquered chilli challenge.

Whiskey Library @ Vagabond Club

39 Syed Alwi Rd

Daily: 5.30pm to 10.30pm

Set within the glamorous Vagabond Club is The Whiskey Library, a sanctuary for whiskey lovers. Appreciate the interiors by world-renowned

French designer Jacques Garcia and sit in the plush red velvet banquettes while exploring the curated whiskey collection with rare ones from around the world.

Swee Choon

183/185/187/189/191/193 Jln Besar
Mon – Fri (closed on Tue): 11am to 2.30pm & 6pm to 2am; Sat & PH: 10am to 3.30pm & 6pm to 3am; Sun: 10am to 3.30pm & 6pm to 2am

Don't be surprised to find a long queue outside this *dim sum* place late at night. Swee Choon Tim Sum is a 50-year-old establishment that's a hit with the younger crowd and occupies five ground-floor shophouses. There's a constant demand

for its signature *mee-suah kueh*, portuguese egg tarts and custard-rich *liu sha bao*.

Meatsmith Little India

21 Campbell Ln

Tue – Sun: 11.30am to 11pm

Though Meatsmith is known for American barbecue food, the branch at Little India turns up the heat offering barbecue-style dishes with a South Asian twist. The highlight is a crab *biryani* served with fresh crabmeat and flying fish roe. There's also pork ribs with coconut chutney, potatoes with a spicy gunpowder seasoning, tandoori chicken cooked low and slow; all prepared in a tandoor oven so the food is delicious and juicy.



Kampong Gelam

Kampong Gelam

Once the seat of Malay royalty and the centre of trading activities, this historic district is the social, cultural and spiritual epicentre of the Muslim community. Steeped in history with its rows of conserved shophouses and key landmarks, these are contrasted with a rich tapestry of quirky shops, traditional trades and lively art murals.

Explore

Kampong Gelam was a magnet for traders and settlers from the Malay Peninsula and the Middle East. This phenomenon saw streets renamed to Kandahar, Baghdad and Arab. Re-explore some of its key landmarks.

1. Hajjah Fatimah Mosque

4001 Beach Rd

Built in 1846, the mosque is Singapore's version of the Leaning Tower of Pisa due to its minaret tilting by six degrees off centre. The land was the site of Hajjah Fatimah Sulaiman, a businesswoman's former house. After two robberies and a fire, she donated it for the building of the mosque.

2. Malay Heritage Centre

85 Sultan Gate

Tue - Sun: 10am to 6pm

A must-visit, learn more about the rich history and culture of the Malay community within the Istana Kampong Gelam grounds where the centre is located. Once the former royal seat of Malay sultans in Singapore, it was built in 1840 by Sultan Ali, the son of Sultan Hussein Shah.

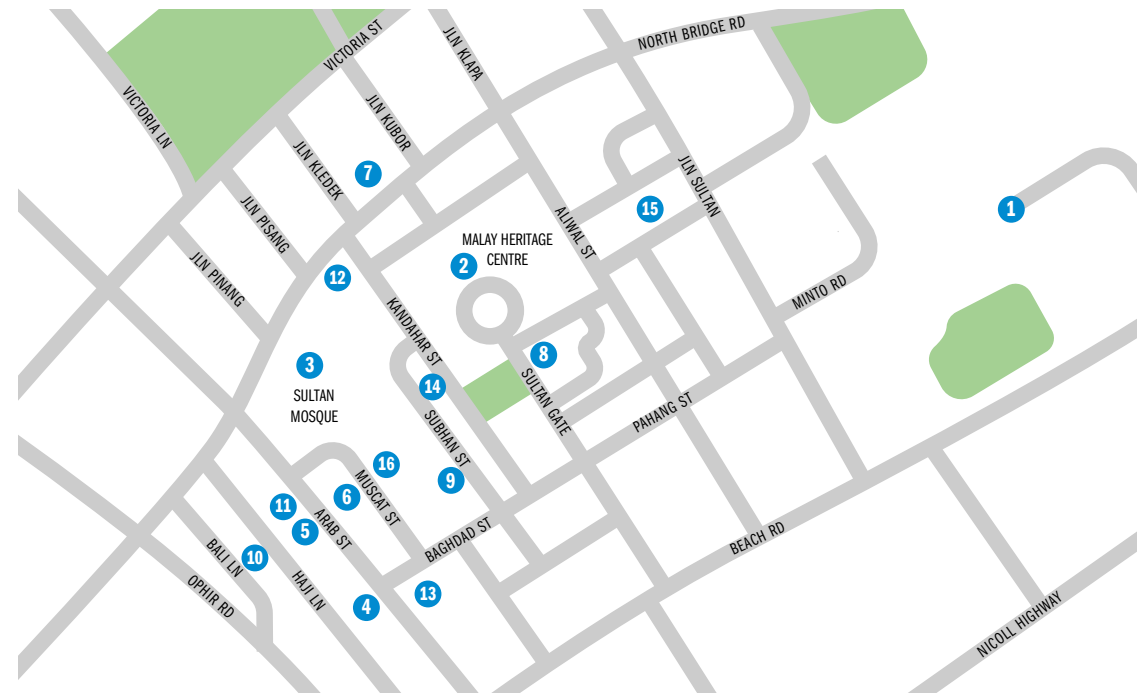


3. Sultan Mosque

3 Muscat St

Daily: 10am to 12pm & 2pm to 4pm

This key landmark attracts worshippers from all over Singapore. It was originally built in 1824 for Sultan Hussein Shah, the first sultan of Singapore. A little-known fact about the mosque's reconstruction: North Bridge Road was forced to bend around the mosque as it was extended beyond Arab Street. Look closely at its onion-shaped domes. Each dome base is decorated with glass bottle ends donated by Muslims during its construction. Go for virtual tours at sultanmosque.sg.



From silk to batik

At the heart of Kampong Gelam is its lively Arab Street. Lined with multi-label indie boutiques and bespoke tailors alongside second- and third-generation textile stores carrying a dazzling array of fabrics. Sift through piles of colourful Thai silks and Indian embroidery and create one-of-a-kind pieces at **Mahaco Impex Silk Shop**. It relocated from Boon Keng to Arab Street in 2000 and its owner Maha Singh Sandhu has been in the trade since he was 11. Let him walk you through the different choices and talk you through how to determine the authenticity of the silk you're buying. On the same street, you'll also find **Toko Aljunied** and **Dilip Textiles**.

Right around the corner on North Bridge Road, **Galeri Tokokita** is one of the latest additions to the enclave. Owner Oniatta Effendi aims to curate collections that are a homage to Malay culture – the *Merdeka* jacket honours the independence of Singapore while the poetry collection features lines of poetry in Bahasa on the fabric itself. Over at the Sultan Arts Village, **Kiah's Gallery** pays homage to the founder's family legacy and love for *batik*. Don't forget **Ratianah** for *kebaya* and **Utopia Apparels** for modern twists to the traditional *batik*.



4. Mahaco Impex Silk Shop

51 Arab St
Daily: 9.30am to 7.30pm

5. Toko Aljunied

91 Arab St
Daily: 10am to 6pm

6. Dilip Textiles

74 Arab St
Mon – Sat: 10.30am to 6pm

7. Galeri Tokokita

757A North Bridge Rd
Tue – Sat: 12pm to 6pm

8. Kiah's Gallery

71 Sultan Gate
Daily: 11am to 7pm

9. Ratianah

23 Bussorah St
Tue – Thu: 12.30pm to 8pm, Fri & Sat:
12.30pm to 9pm, Sun: 1pm to 7pm

10. Utopia Apparels

47 Haji Ln
Mon – Thu: 11am to 8pm,
Fri – Sun: 11am to 9pm



Credit: Galeri Tokokita



Perfumes, books and gems

Kampong Gelam is home to many shops that have stood the test of time and are operated by long-time stakeholders and some by next-generation owners of the area. Drop by **Aljunied Brothers** for agarwood products like prayer beads, perfumes and olive body products and soaps. Established in 1966 by Syed Haroon Bin Hasan Aljunied and his sons, the shop is now run by his grandchildren.

Started in 1933, **Jamal Kazura Aromatics** is one of the oldest surviving *attar* (non-alcoholic perfume) businesses in the area, offering essential oils sourced around the world. Today, it attracts not only Muslims but also Buddhists purchasing sandalwood incense and Christians buying frankincense. Johari Kazura, the grandson of the founder, has created his own brand and set up **Sifr Aromatics** right around the corner. These shops coexist with **Gems Shop**, **The Heritage Shop** and **Wardah Books**.

11. Aljunied Brothers

95 Arab St
Mon – Sat: 10am to 6pm

12. Jamal Kazura Aromatics

728 North Bridge Rd
Mon – Fri: 10am to 6pm, Sat: 10am to 2pm

13. Sifr Aromatics

42 Arab St
Wed – Sat: 11am to 8pm, Sun: 11am to 5pm

14. Gems Shop

26 Kandahar St
Tue – Fri: 12pm to 5pm, Sat: 11am to 3pm

15. The Heritage Shop

93 Jln Sultan
Daily: 1.30pm to 8pm

16. Wardah Books

58 Bussorah St
Sun – Thu: 10am to 6pm,
Fri & Sat: 10am to 9pm

Eat

Eat your way around the globe at Kampong Gelam with its many diverse cuisines.

The Dim Sum Place

791 North Bridge Rd

Mon - Thu: 11am to 3pm & 5.30pm to 11pm

Fri & Sat: 11am to 2am, Sun: 11am to 11pm

Feast on sumptuous *dim sum* at this Halal-certified joint, a rarity in Singapore. The Cantonese-style cuisine here is infused with local flavour, such as the braised duck *chashu* bun (a pork alternative), steamed chicken *siew mai* with shrimp (pictured), vermicelli roll with lamb *rendang* and beef short rib with black pepper.

Pita Bakery

29 Bali Ln

Mon - Thu: 9am to 9pm, Fri - Sun: 9am to 9.30pm

A shophouse bakery specialising in fluffy and freshly baked pita bread. Pita Bakery makes each bread from scratch and is known to supply to various Mediterranean restaurants in Singapore.

Bhai Sarbat

73 Bussorah St

Daily: 6.30am to 1am

Save room for frothy cups of *teh tarik* and spicy curry puffs from Bhai Sarbat, one of Singapore's last-standing sarbat stalls. It was set up in the 1950s by two merchants hailing from Uttar Pradesh. Now, second-generation owner Mohammed Asgar, continues the tea-pulling tradition.

Warong Nasi Pariaman

738 North Bridge Rd

Thu - Tue: 7am to 4pm

Founded in 1948, Warong Nasi Pariaman is one of the oldest *nasi padang* stalls in Singapore. Plates are packed with rice covered in gravy and an assortment of side dishes such as beef *rendang*, *sambal goreng*, *bagedil*, *ikan bilis*, tofu and long beans.

Chix Hot Chicken

1 Jin Pisang

Daily: 12pm to 9pm

Chix Hot Chicken serves the spiciest chicken in town. Choose from these options on the menu: quarter chicken with a choice of thigh and leg or breast and wing, half or three whole wings (pictured). You can choose your spiciness level too: between mild hotness, extra hotness or insane hotness.

Cicheti

52 Kandahar St

Daily: 12pm to 2.30pm & 6pm to 10.30pm

Since its opening in 2013, Cicheti has been serving solid Italian-inspired creations and good vibes in equal measure. What the restaurant is known for, are their beloved Neapolitan-style pizzas, all nicely charred in its wood-fired oven imported from Italy.

Monarchs & Milkweed Gelato

802 North Bridge Rd

Tue - Sun: 12pm to 10pm

Cool down with a Sea Salt Gula Jawa Gelato at Monarchs & Milkweed. The cafe is helmed by young business owners who had worked at fine dining restaurants overseas as well as Michelin-starred restaurant Cheek by Jowl.

The Secret Garden by Zeekri

19 Baghdad St

Mon - Thu: 11.30am to 9.30pm, Fri: 11.20am to 10.30pm, Sat: 9am to 10.30pm, Sun: 9am to 9.30pm

This Muslim-owned floral-themed brasserie offers unique French fare in the heart of Kampong Gelam. Don't miss the delicious patisserie, from mini croissants (pictured) to Danish pastries.



Art takes over

Walking around Kampong Gelam, you won't miss the street art and murals in many different corners, reflecting part of the area's rich culture and heritage. **Aliwal Arts Centre** (a multi-disciplinary hub for arts groups operating at the former Chong Cheng School and Chong Pun Girls' School) champions this with various art festivals. Nearby, **Cuturi Gallery** aims to be a next-generation art gallery that also acts as an incubator for emerging artists in Singapore and in the region. At the back alleys of Bussorah Mall, check out **Gelam Gallery**, the only outdoor gallery with 30 artworks on display. Then go to **18 Jalan Klapa** to find more quirky art by 21 local creatives and students of marketing company AMC Asia!

You will also find the "**Hall of Fame**", created by 17 artists, spanning nearly 240 m along Ophir Road and Bali Lane. Look closely to see time portals and larger-than-life pigeons, reflecting personal memories of Kampong Gelam, past, present and future.

Aliwal Arts Centre

28 Aliwal St

Cuturi Gallery

61 Aliwal St
 Tue – Sat: 12pm to 7pm,
 Sun: 12pm to 6pm

Gelam Gallery

Back alleys of Bussorah Mall

Art murals by AMC Asia!

18 Jin Kalpa

Hall of Fame

Bali Ln and Ophir Rd

Credit: One Kampong Gelam



Shaping Kampong Gelam

This neighbourhood is constantly evolving. What makes this place special is its warmth and its tight-knit community working together to add to its unique charm. Some of its long-time stakeholders reflect on what this area means to them. They are Julina Khusaini, General Manager, The Malay Heritage Foundation, Zaini Osman, Senior Director, Mosque & Community Development, and Mohamed Patail, Chairman, Board of Trustee, Masjid Sultan.



What is special about Kampong Gelam to you?

Julina: It is unique because so many of us have a part of this place in our hearts.

Patail: I remember my growing up years at Bussorah Street. Everyone knew each other. Neighbours would drop by to *makan* (eat), have a chat or even take a nap. This same street remains, and it is a physical reminder of this wonderful atmosphere that continues to this day.

Zaini: I often visited Kampong Gelam as an architecture student because it is the place to experience our historic streetscapes firsthand. Had it not been for the early conservation efforts to protect many of the shophouses and buildings in this area, it would be very difficult for us to imagine what our streets really looked like in the past.



To learn more about how they help shape Kampong Gelam, read more online

Explore public art around the island

Our encounters with art in public space may be accidental, distracted or purposeful. Shaping and experiencing the many art installations and works around Singapore, are intricate layers of social, cultural, and economic influences and elements. Public art reimagines and reignites spaces around us and is intertwined with the essence of who we are as individuals and as a city. *The Art in public space* book delves deeper into the forces and influences shaping public art in Singapore across decades. For more information about the book go to ura.gov.sg/Corporate/Resources/Publications.

Check out some of the unusual and interesting public art pieces featured in this book.

→ D.88 Istana Park

Gary Carsley, 2009
Orchard Central

Not just a mall, Orchard Central is also a gallery with the largest collection of public art installations. Experience its illuminated vertical photo tunnel, made up of 294 glass panels with digitally reconstructed images of indigenous trees in the nearby Istana Park, the photographic stills are intermingled with faux timber veneer and wood grain, a tongue-in-cheek nod to the lure of advertisement and merchandising, while alluding to Orchard Road's history as a spice plantation.



Credit: Fabian Ong

← Wind Arbor Ned Kahn, 2011 Marina Bay Sands

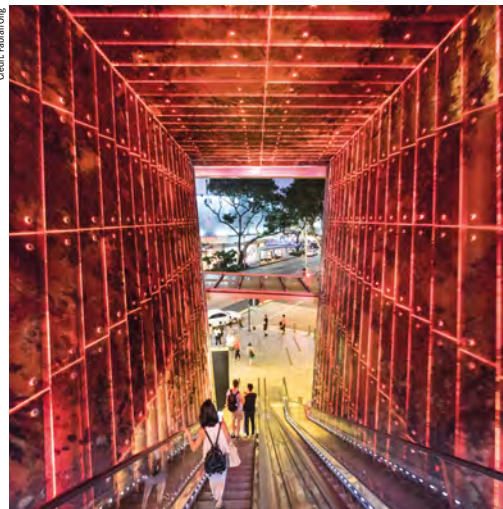
Adorning the façade of the Marina Bay Sands hotel atrium, this is the most impressive artwork of the development's collection. With 260,000 aluminium metal discs assembled into a 15 m high sheet, the artwork exploits the natural movement of air. As a gust of wind passes across the building, the reflective surface of each metal disc flutters freely to catch the sunlight, showing a shifting surface that engages and moves with the passing traffic.

↓ A Piece of Ice-Clear Heart

Lim Mu Hue, 2011
Esplanade MRT

This large mural is a collage of seven relief prints carved by the artist, showing Chinese theatre scenes and Javanese shadow puppetry. Inspired by the station's namesake landmark, Esplanade Theatres on the Bay, the graphic power of the monochrome compositions presents a striking backdrop. Part of the Land Transport Authority and SMRT's transit art programme, such artworks make travelling on trains more delightful.

Credit: Fabian Ong



Credit: Land Transport Authority

↓ Struggle for Survival

Aw Hee Tong, 1988
Raffles Place

Commissioned for the inauguration of the Raffles Place MRT Station, this is one of two sculptures resembling sailing ships as a symbol of Singapore's story from fishing village to metropolis, remembering the struggles of early migrants to Singapore. Its location is particularly significant as many early migrants arrived at the Singapore River, the early focal point of economic activities.

Credit: Fabian Ong



above below beneath above

Olafur Eliasson, 2012
Capitagreen

Made up of 56 steel columns and 16 lighted polyhedron spheres, this installation permeates the public plaza at the office building. Simulating the biological properties and appearance of aerating roots rising from the earth, it symbolises adaptable invisible structures and systems that connect individuals and society. This and other artworks and installations are integral parts of the building design, enabling people to enjoy and experience the spaces around and within the building.

Credit: Fabian Ong



1. V&A Chandelier, Dale Chihuly, Scotts Square, 2. Soul, Jaime Plensa, Ocean Financial Centre (photo credit: Keppel), 3. Six Brushstrokes, Roy Lichtenstein, Millennia Walk (photo credit: Pontiac Land), 4. That's One Tough Lady, Belinda Low, Block 4 Banda Street (photo credit: Fabian Ong), 5. Momentum, David Gerstein, Finlayson Green (photo credit: Raffles Quay Asset Management), 6. Angury, Anthony Lau, ASEAN Sculpture Garden, Fort Canning Park (photo credit: Fabian Ong).

Try out photographer Joseph Nair's bike routes

Photographer Joseph Nair lets us in on his personal bike rides trying out two cycling routes.

I don't own a car, so getting from point A to B always meant a bus, taxi or MRT ride. With a chance to try out some cycling routes, I borrowed a foldable bike, dug up a helmet and hit the streets. Thankfully, one cannot forget how to ride a bike.

North Eastern Riverine Loop

Across park connectors in Sengkang and Punggol

Starting at Punggol Park, I weaved around Pokémon hunters, #fitspo people and Instagram boyfriends. The route traced a portion of the length of Sungei Serangoon, a river dammed up to form a reservoir. Pandan plants along the park connector made for a pleasant ride. I then turned into the quieter Lorong Halus.

Further down from the Lorong Halus bridge, the reed wetlands of Lorong Halus are a popular photo spot when dry. They serve as natural filters of water that flows out the now-disused Lorong Halus landfill into the Sungei Serangoon.

I pedaled down the river from the wetlands to emerge on Coney Island. The air was much cooler here, thanks to the casuarina woodlands, and is filled with birdsong in the evening. The sandy main trail crunched under my tires.

After cycling about 2.4 km, I made my way off the route via the western causeway while a troop of monkeys watched. And then it was back to the Sunday throng on the park connector. My final stop: Punggol Point, to catch the last rays of sunlight dance across the surface of the water.

Credit: Joseph Nair



Credit: Joseph Nair



Credit: Joseph Nair

Northern Explorer Route

From Yishun to Woodlands

My journey began in Khatib, near the sprawling prawning farms at multi-recreational park ORTO. The trail led me to the lush Mandai Park Connector, with its wide, seemingly endless bike tracks. Apart from the muddy mountain bikers and monkeys running around the area, the trail in the Central Catchment Area made for a pleasant, even calming, ride.

From Admiralty Park, I adjourned for lunch at a kopitiam along Marsiling Lane. Along the way, I spied a man in cowboy hat waiting for a bus. I knew my trip would take me close to Johor Bahru, but I had no clue it was this kind of border town.

Once I hit Woodlands Waterway Park, I turned around and wandered into the old quarters of the Sembawang Naval Base. Parts of Admiralty Road West from Marsiling to Sembawang Park are dotted with remnants of the old British Naval Base.

After meandering around looking for a way out, I found myself at the Simpang Kiri Park Connector, whose cycling path is far more even than the grounds of the Naval Base. Before I knew it, though, I was back under the tracks and had wound up at Yishun MRT Station.

See the city on a bike

Explore the Land Transport Authority's *Move Happy Explore SG ride*, made up of a mix of park connectors, cycling paths and footpaths.

LEGEND

- Easy route* (~4 km)
- Moderate route* (~13 km)
- 🚲 Bike Share Parking Zone/Bicycle Rental
- 🚇 MRT
- 🏪 Mall

*Route consists of footpaths. Users of motorised PMD/PAB need to dismount and push along footpaths.



Jurong: This scenic Jurong route takes you through the lush Jurong Lake Gardens and is perfect for both novice and seasoned riders. While on this route, keep your eyes peeled for The Lone Tree in the middle of an open field. The “tree” is actually a sculpture made from recycled iron parts that pay homage to Jurong’s industrial past.





Marina Bay–Rochor: Cycling in the city can be scenic and enriching. Enjoy the city's skyline as you cycle through Singapore's city centre. But it's not all about modern buildings and skyscrapers – half the route will be by the waterside, taking you through Kallang River and Marina Reservoir. Look out for the iconic otters of Singapore that have made the reservoir their home.



Scan for more information about the trails



LEGEND

-  Moderate route* (~10 km)
-  MRT
-  Bike Share Parking Zone/Bicycle Rental
-  Mall

*Route consists of footpaths. Users of motorised PMD/PAB need to dismount and push along footpaths.



1



2



6



3

Find gems in the nine neighbourhoods

These little gems and items reflect parts of the identities and experiences of the nine areas featured in this guide.



7



4



8



5



9

1. Religious artefacts

From museums to churches, the Bras Basah, Bugis area is where religion and culture thrive together. Find religious memorabilia at Carlo Catholic Society at 225B Queen Street.

2. Jasmine garland

Capturing the rich colours and vibrancy of Little India, you can find this in many shops in the area.

3. Football scarf

The Singapore Sports Hub at the Kallang River is where many sporting memories are formed. Head to page 30 to find out the many attractions around it.

4. Peranakan tiles

The East Coast and Katong areas are often synonymous with Peranakan culture. Bring home some pretty tiles from The Intan at 69 Joo Chiat Terrace.

5. Train set

A nod to the Rail Corridor's heritage, read more about its historic bridges and landmarks on page 12.

6. Soldiers

Parts of the Telok Blangah and southern ridges area has a rich military history, with its many military encampments and fortifications built by the British. Read more about its history on page 22.

7. Ang ku kueh

This traditional Chinese pastry can be found at the Ji Xiang Confectionery at #01-33, Block 1, Everton Park, reflecting the many long-standing shops in Tanjong Pagar and its nearby neighbourhoods.

8. Goat milk

Produced by Hay Dairies, the only goat farm in Singapore is located at 3 Lim Chu Kang, Lane 4, and is part of the green havens of the Greater Rustic Coast.

9. Batiks

Batik and other textiles can be found along Arab Street in the historic Kampong Gelam. Check out the beautiful collection of batik at Galeri Tokokita at 757A North Bridge Road.



Credit: Ramana Venkta



Credit: Ramana Venkta

“
I would often spend my days playing with my neighbour’s kid or putting my ears to the ground to listen for coming trains (along the Rail Corridor).

Ramana Venkta (his father, the Station Master, is pictured on the left), on growing up at the conserved Bukit Timah Staff Quarters along the Rail Corridor.

“
I recall often visiting Kampong Gelam as an architecture student because it is the place to experience our historic streetscapes firsthand.

Zaini Osman of the Mosque & Community Development, on why Kampong Gelam is special to him.



Behind every place and building are personal stories that make up our collective experiences and memories.

Scan to read more personal urban stories online.

