

2nd Prize

Undercover Spaces: A Secret Beneath

Team members

Architect: Mode Architects Pte Ltd

Civil & Structural Engineer: Vengineers

Mechanical & Electrical Engineer: Hitech Engineering

Quantity Surveyor: Ng 3 Consultants Pte Ltd

Description

A large play court is designed to be versatile to accommodate a range of sports activities and events.

A key design element of the proposal is the introduction of “Memory Arches” on the viaduct ceiling, which are meant to evoke the memory of Tanjong Pagar Railway Station. Various typologies of seating have also been proposed along the slopes to provide a range of gathering spaces for the community. Rail car cabins that can host markets, craft fairs, and other small-scale events also line the Rail Corridor trail.

Outside of the viaduct, a selection of native local plants and shaded seating areas are proposed to encourage peaceful strolls and quiet reflection. This area will also house a yoga retreat, a playground, and a community garden.

Jury’s Comments

The jury appreciated the strong architectural approach and distinctive design elements that relate the node with the Rail Corridor’s railway heritage. The “memory arches” were particularly imageable, and served to define spaces for various community activities.

The slopes were creatively re-imagined to accommodate a variety of public spaces and seating typologies. However, the jury noted that the design requires substantial excavation, which would add complexity and cost to the project. Overall, the jury commended the team for their boldness and creativity in transforming the Queensway node into a unique activity space along the Rail Corridor.

QUEENSWAY NODE DESIGN COMPETITION- MASTER PLAN AND DESIGN CONCEPT

UNDERCOVER SPACES-A SECRET BENEATH

This proposal presents the design interventions and master plan for transforming the Queensway Node, a unique 19,000 sqm space under the flyover and part of the historical railway corridor. The vision is to turn the space into a dynamic, multi-functional area that promotes community engagement, recreational activities, and environmental sustainability.

Our approach is to create a harmonious blend of history, nature, and modern amenities that serve the public in various ways - whether for leisure, sports, cultural performances, or relaxation.

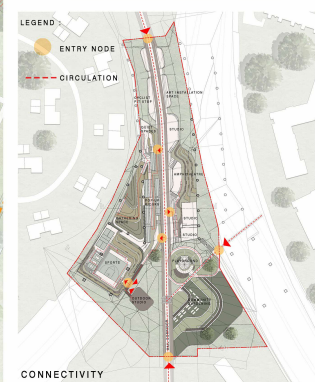
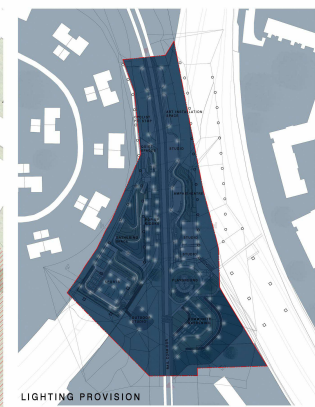
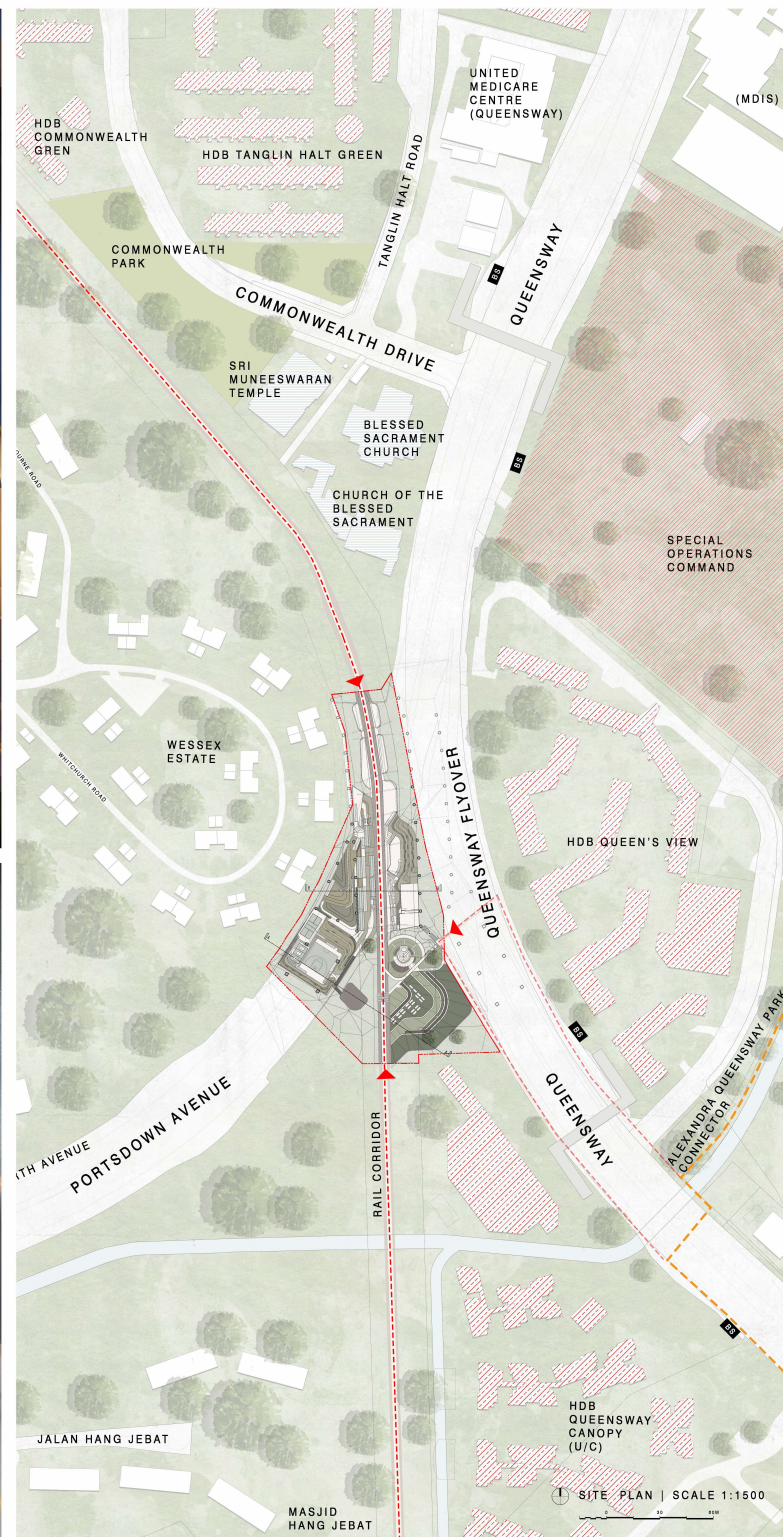


A view from the Railway Corridor reveals a welcoming space where visitors from nearby neighborhoods can experience Memory Arches, Rail Car Pavilions, the Vault Theatre, and a Cyclist Pit Stop—all designed to encourage community gathering, interaction, and a shared sense of belonging.



A perspective view from west showcases an elevated earth mound, thoughtfully integrated with the existing topography to create recreational opportunities accessible to all.

REGISTRATION NUMBER : 858631



1 CYCLIST PIT STOP

Serves as a convenient, functional, sheltered space for cyclists and easily accessible from the cycling path. Equipped with essential facilities such as a water refill station, washing facilities, bike racks, and seating.

ART INSTALLATION SPACE

Cultivates artistic initiatives amongst the community by providing spaces for artists and creatives to express themselves through various artistic mediums along the rail corridor.

3 VAULT THEATER

Open seating with an amphitheatre-style layout designed for community performances and events. An amphitheatre for movie screenings, performances, and small concerts, with an acoustic design that enhances sound quality. The space also provides shaded, enclosed areas for art and craft workshops, allowing local artists or educators to host community sessions.

4 SEATING AREA

A general purpose seating area for those looking for a break amidst their commute on the rail corridor, as a waiting space, or people-watching.

5 ACTIVE STUDIOS

The active studios provides flexible spaces in various sizes suitable for hosting an array of activities, from intimate dance practice sessions to high-intensity zumba classes.

7 QUIET SPACE

A small space tucked away from the bustle of the other programs, for visitors to relax.

6 THE ADVENTURE NEST

The playground is placed in an open, visible area surrounded by flowering shrubs and small trees to provide shade, while maintaining clear sightlines for safety. Its design theme and play features encourages children to be adventurous and engaged with nature.

8 RAIL CAR PAVILIONS

The rail car-inspired structures, serve as an homage to the historical railway corridor, creating a visual and thematic connection to Singapore's past. The pavilions shall host pop-up markets, craft fairs, and small-scale events, adding vibrancy and variety to the space. Information panels shall be installed within or near the pavilions to educate visitors on the history of the railway, offering a deeper understanding of the area's significance.

9 SANITARY

One pavilion will be designated as a public toilet and washing point meant to serve visitors.

10 GATHERING SPACE

These spacious platforms sit atop the other programs serving as the destination for visitors to hangout and host small gatherings, after a hearty workout session or a walk through the pop-up markets.

11 COMMUNITY GARDENING CORNER

Positioned within the softscape, near the pathways for easy access, while still blending with the surrounding natural environment. This corner features raised garden beds made from sustainable materials like reclaimed wood, allowing visitors of all ages and abilities to engage with the garden.

12 THE PLAY COURT

A multi-sport area for activities like basketball, table tennis, and pickleball, designed to be versatile for different sports and age groups. Flexible, open spaces for temporary setups, exhibitions, or communal events.

13 YOGA UNDER THE TREE

A quiet, shaded area of the softscape, surrounded by taller trees and layered vegetation, a natural timber platform creates a secluded, serene space, inviting users to immerse themselves in a peaceful, outdoor meditative experience.

14 THE GREEN CANOPY

This patch of verdant landscape offers a serene natural environment with a carefully curated selection of native local plants. Sustainable landscaping can attract fauna and wildlife to the Queensway Node by creating a balanced, diverse habitat that supports local species.

15 MEMORY ARCHES

Arched structures attempting as a striking sculptural installation, is proposed to draw visitors' attention, blending art and history in a way that enhances both the educational and aesthetic experience. The arches are designed to stand out as visually captivating forms under the flyover, incorporating arches and textures that evoke the memory of Tanjong Pagar Railway Station. The sculptural intent makes them an artistic focal point in the space. Subtle lighting accentuates the arches at night, highlighting their shape, enhancing the area's ambience and making the arches a nighttime landmark.