

IMPROVE SAFETY OF USE OF SPLINTING PANS

MEMBERS: PRISCILLA CHAN, PAMELA LEE, QIU HUAYING
OCCUPATIONAL THERAPY, REHABILITATION

- SAFETY
- PRODUCTIVITY
- PATIENT EXPERIENCE
- QUALITY
- VALUE

Define Problem/ Set Aim

Opportunity for Improvement

The Occupational Therapy department houses 7 splinting pans in both Tower A & Tower B that requires frequent cleaning and maintenance on a weekly basis.

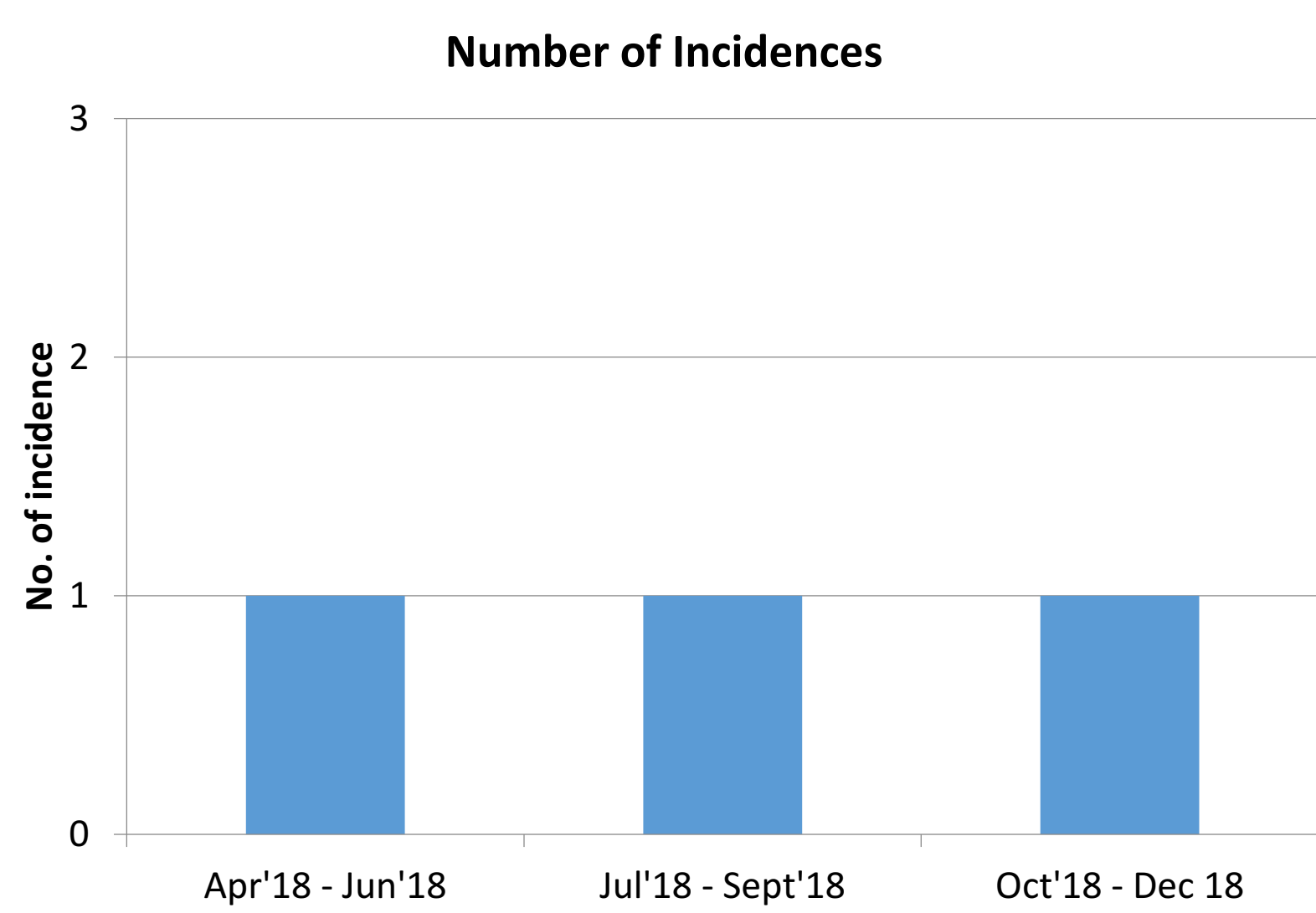
There has been multiple episodes where the water drainage valve remained open after refilling the splinting pan with clean water, resulting in overheating of the empty splinting pan which could potentially lead to fire safety issues if left unnoticed.

Aim

By reviewing the work process of cleaning the splinting pan, we hope to eliminate the incidences of overheating the empty pans.

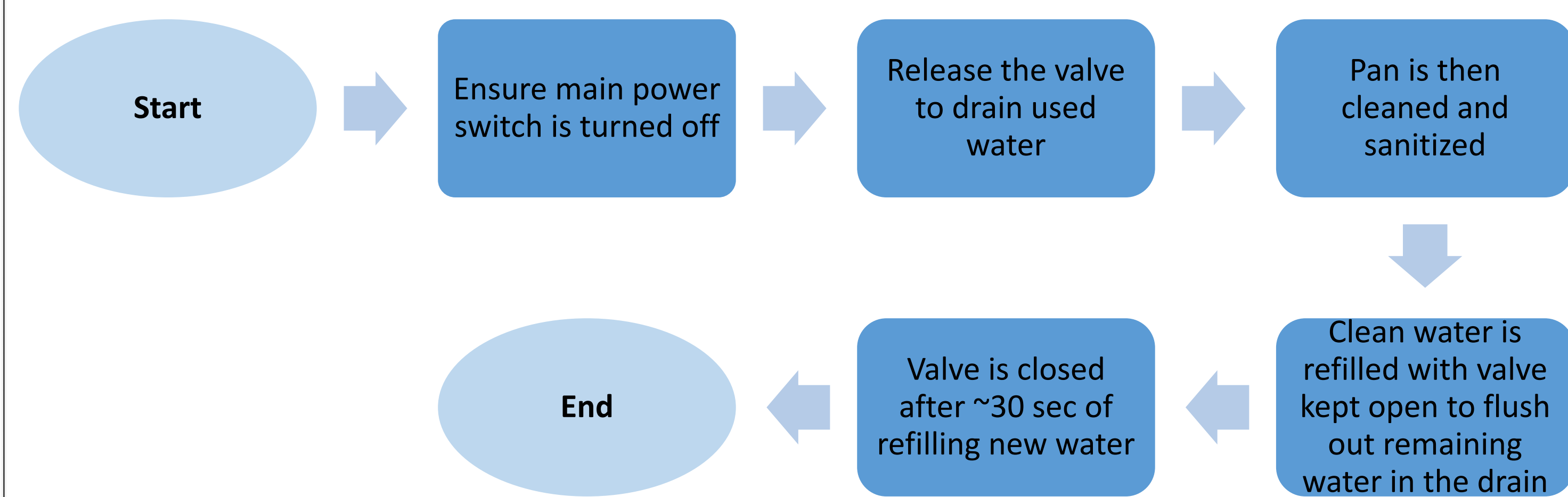
Establish Measures

No. of incidences of overheating from March 2018 – Dec 2018

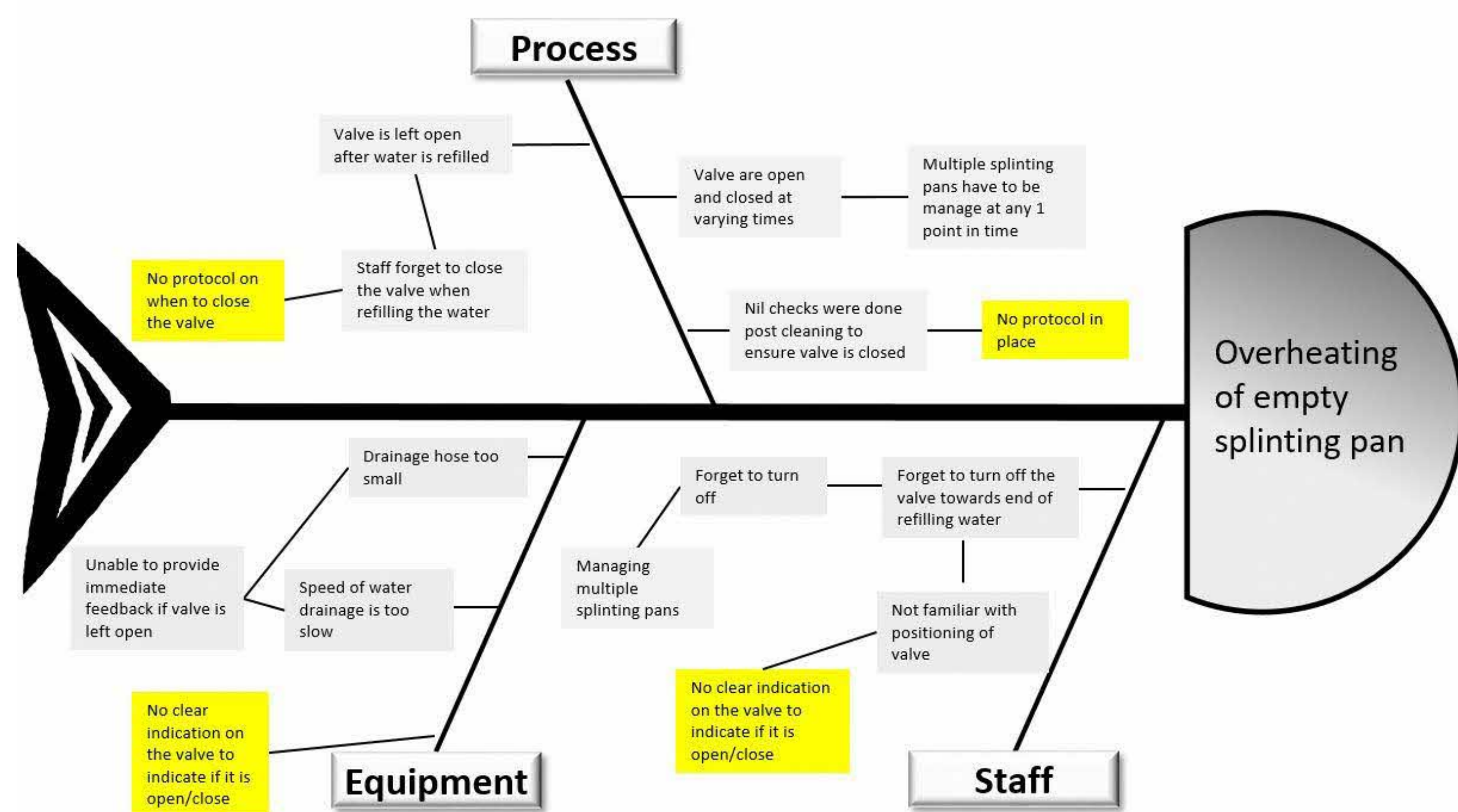


Analyse Problem

Current work Process



Probable Root Causes

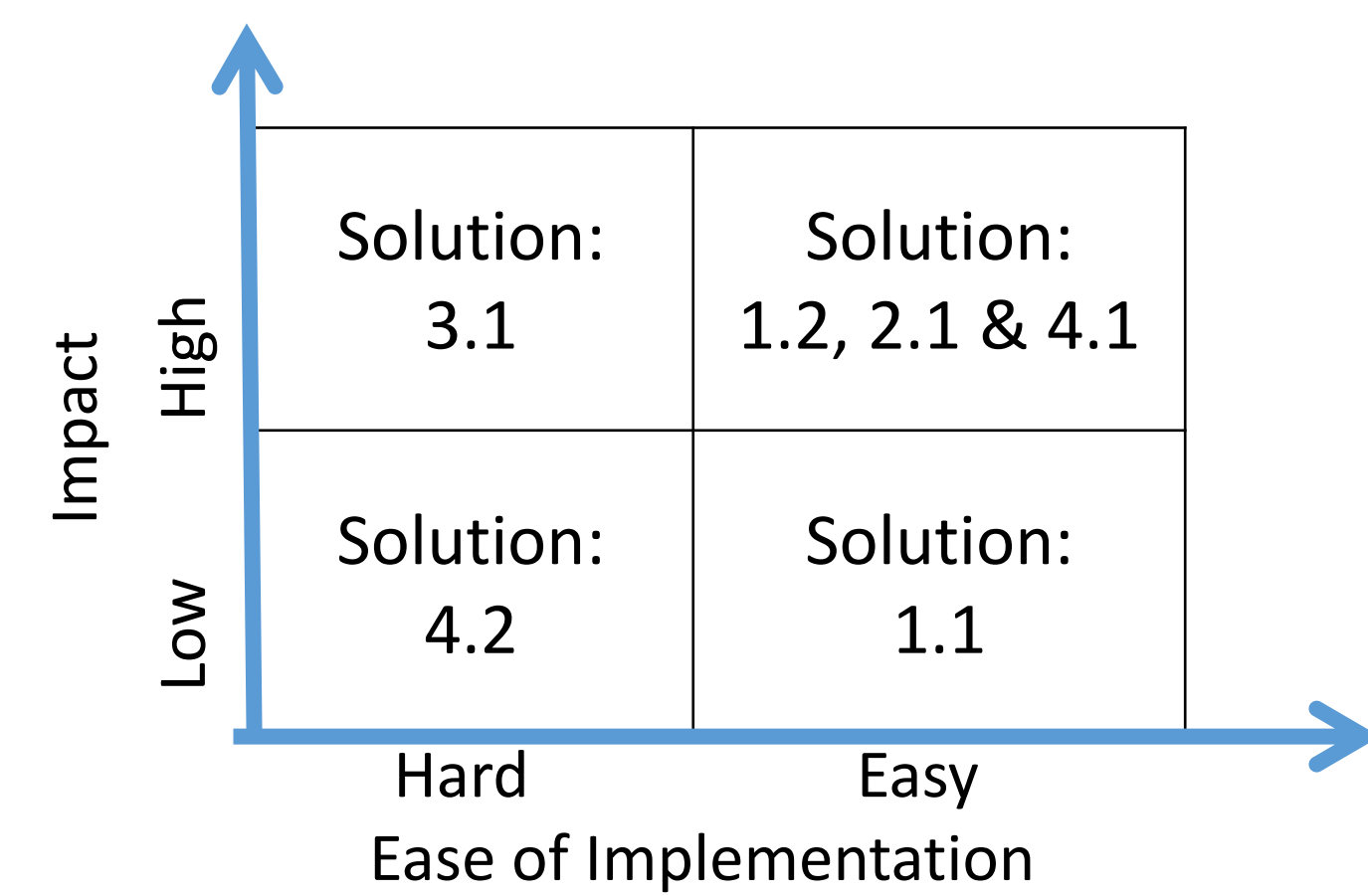


Main Root Causes:

- Nil indication on splinting pan to indicate if the valve is open or close
- No protocol in place to ensure safety checks are done

Select Changes

Root Causes	Potential Solutions
1. Managing multiple splinting pans at 1 time . Multiple work processes involved at the same time	1.1 Only refill 1 splinting pan each time
	1.2 Provide cleaning safety checklist for each splinting pan
2. No clear marking on positioning of valve	2.1 Place marking on splinting pan for clear indication when valve is unlocked
	3.1 Change drainage hose
3. Drain flow is not significant	
4. Staff may be unfamiliar with positioning of valve	4.1 Provide cleaning safety checklist for each splinting pan
	4.2 Do more extensive training for staff



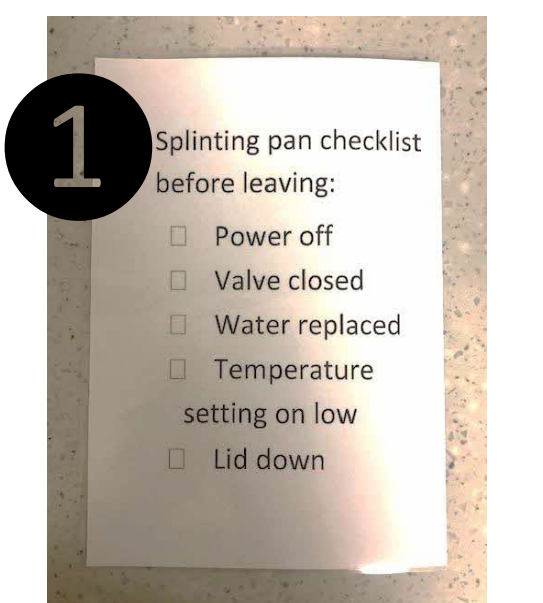
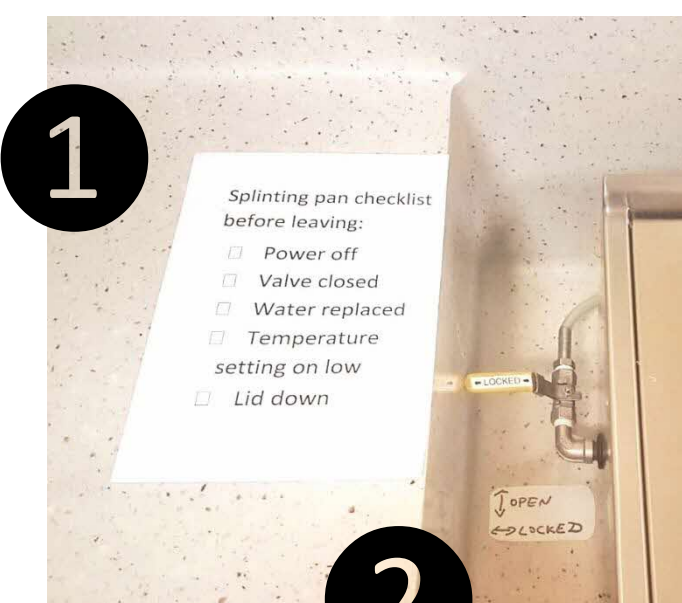
Test & Implement Changes

What was done:

Before:

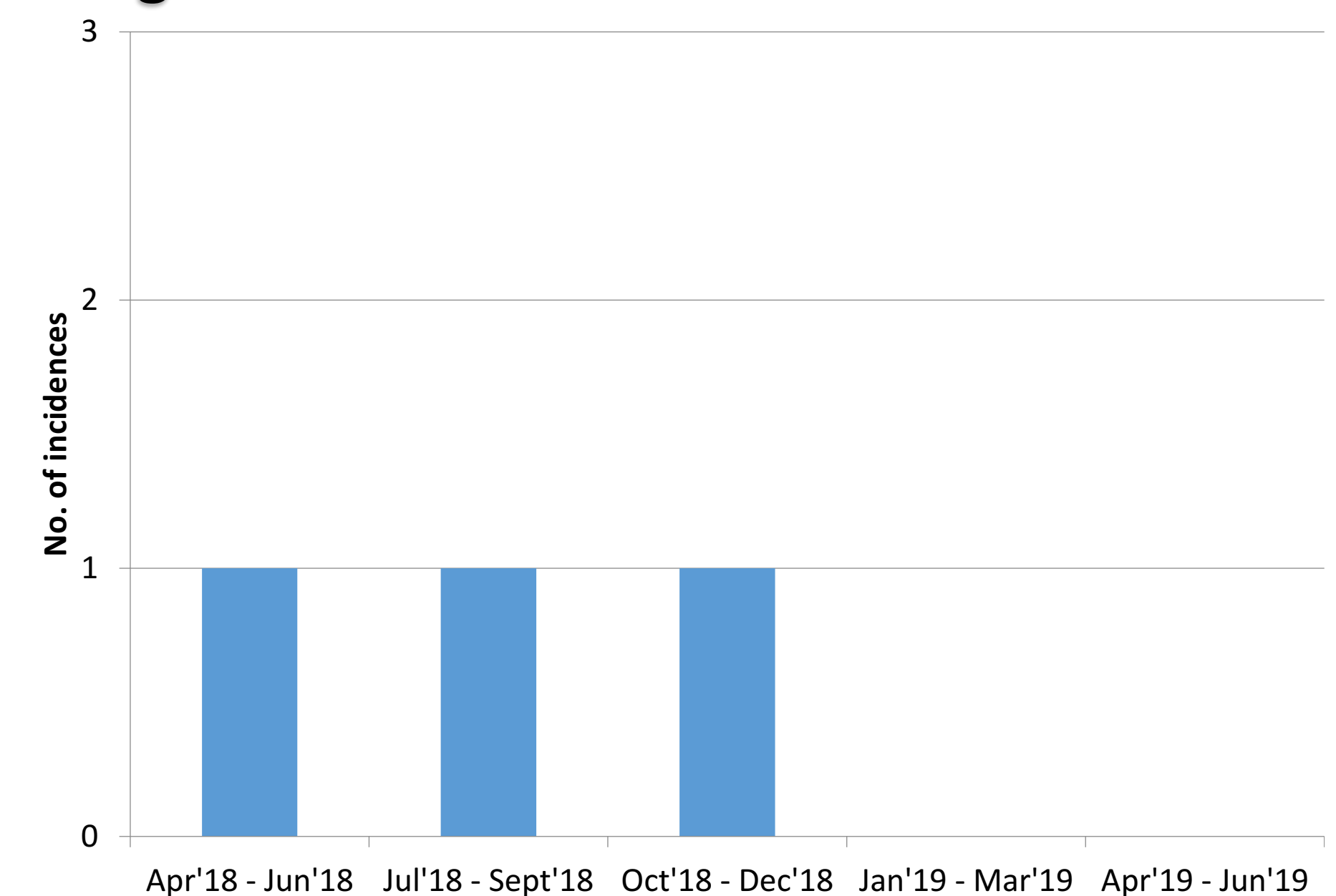


After:



Feedback given by the staff: Checklist and visual cues provided a timely reminder to ensure all safety checks are in place for each cleaning session

Monitoring of Changes:



Spread Change/ Learning Points

- Work processes can be adjusted to minimize room for human errors
- Simple visual cues can work effectively to facilitate work processes
- Moving forward: The team will continue to monitor the effectiveness of such visual aids in equipment-based work processes and consider review of other work process