

Patient Information Board (PIB)

1. Problem Statement



Manually transcribing patient information.



This process is laborious and is subject to human errors which may compromise patient safety.



2. Requirement



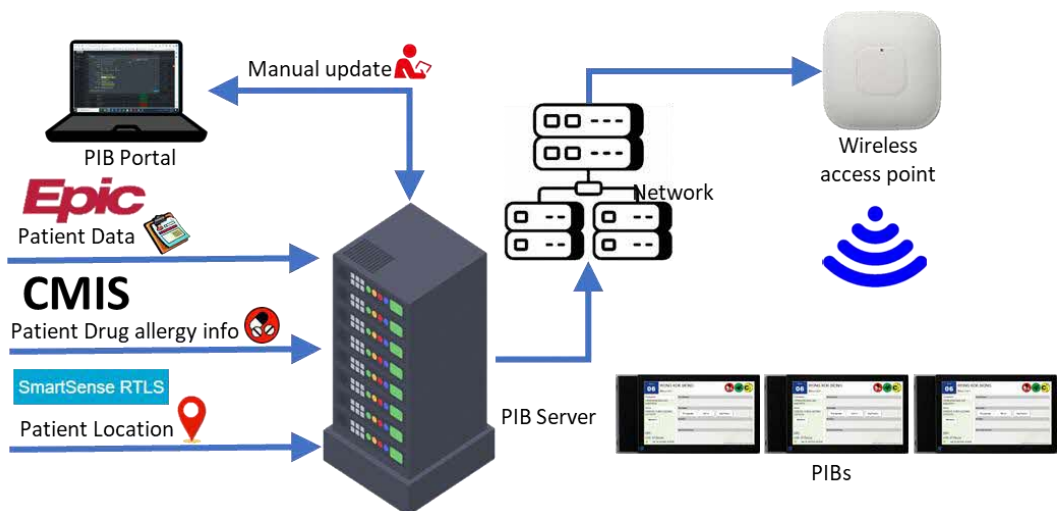
Interface patient demographic and clinical data from Epic, CMIS and RTLS systems.



Provide clear and concise patient Information at a glance.



3. Solution



4. Benefits



Automatic display of patient demographic and clinical data from Epic, CMIS and RTLS systems.



Improved patient safety by preventing transcribing errors that may occur in the current manual process.



Enable nurses to better attend to the patients' needs and provides access to important information at a glance, resulting in potential saving of 12,000 nursing hours per year toward patient care.