

Elder-Friendly Board

Team Members

Ho Wee Ling | Alqueza Dela Torre | Logesvary Chandaran
| Cristine Barabad | Lucia Kwan Mai



Challenges

Caring for the elderly in the ward, especially residents with dementia who experience confusion, memory and communication difficulties, can be challenging for nurses. Environment has a big impact on how they can cope with their everyday lives. They don't feel sense of community in the ward, moreover, amidst this pandemic, low mood, confusion with time and place, loss of initiative or motivation, difficulty performing familiar task and feeling hopeless are noticeable.



Objective

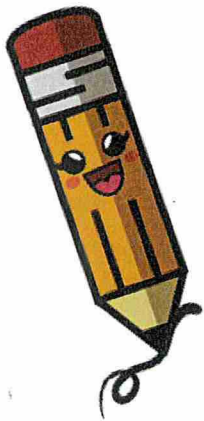


To implement a tool that gives the resident an elder-friendly environment that can give a sense of community, foster inspiration and motivation, provide information, save time, promote productivity and facilitate communication among the residents. Most importantly, a tool that is cost-effective and accessible for everyone in the ward.



Approach

Plan-Do-Check-Act approach is used to solve the problem and to manage the change. Formulated a questionnaire using a 5-point Likert Scale as qualitative pre- and post-evaluation tool to measure residents' and staff's level of agreement with the project, involving 10 residents and 10 staff members. Bar chart is used to visualise the outcome.



Solution

Implemented an Elder-friendly board that can give variety of purpose. Reality orientation, activities for the day, art and craftwork display, reminiscence therapy and picture area that shows their involvement in every activity in the ward. Cost-effective and can be easily carried out and updated by the nurses in the ward with a participation of the residents.

Outcomes

- Residents positively engage themselves in activities such as Art and Craft as they can see their works has been valued and appreciated when displayed on Elder-friendly Board. Less confusion for the patient with Dementia using Reality Orientation Board.
- Residents initiated the conversation by sharing their past experiences by looking at the Reminiscence area.
- Nurses save time in explaining to the patient the activities of the day and orientating them the date, time etc. Furthermore, inspiring and uplifting messages posted on the board keep them motivated.

